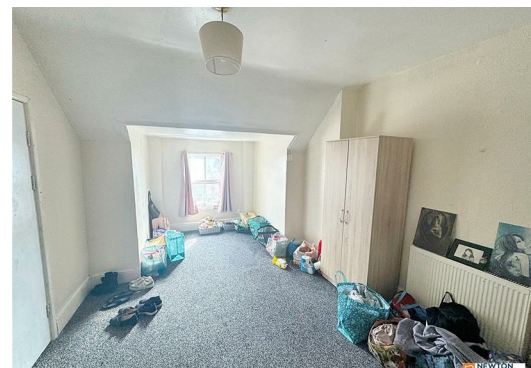
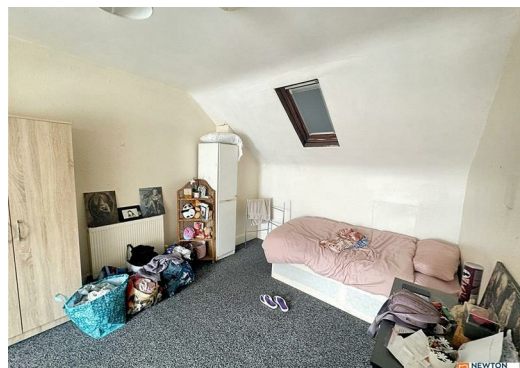




Slade Road,
Birmingham, B23 7LX
By Auction £160,000



***Investment Opportunity???

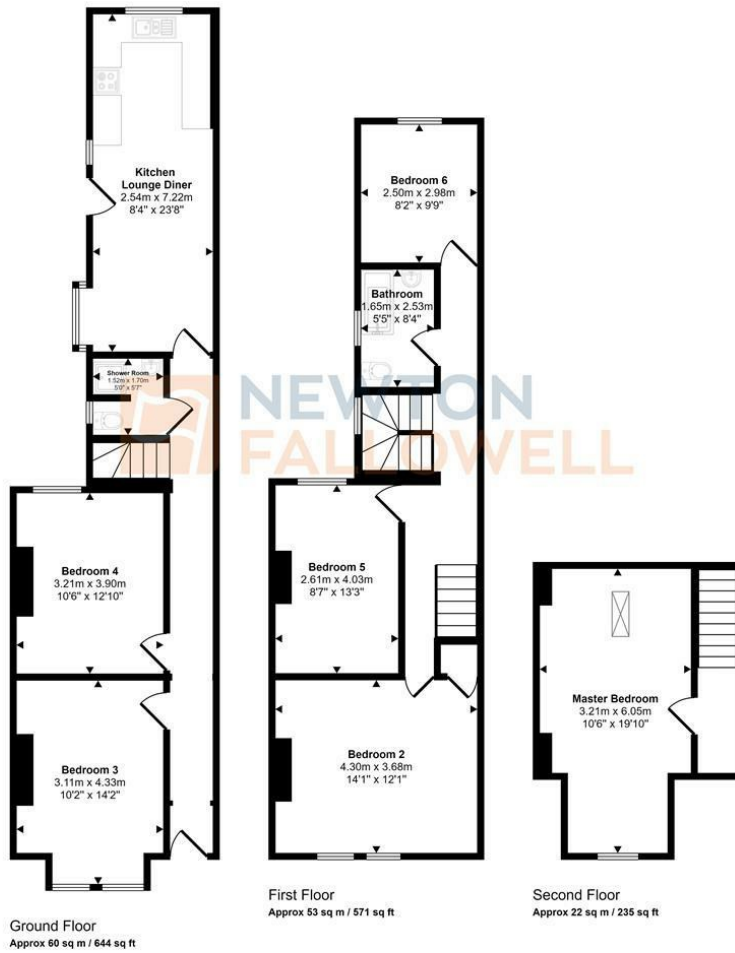
For sale by Modern Method of Auction: Starting Bid Price £160,000 plus Reservation Fee.

A great opportunity to purchase this 6-bedroom terraced property within a sought-after location in Slade Road, Erdington.

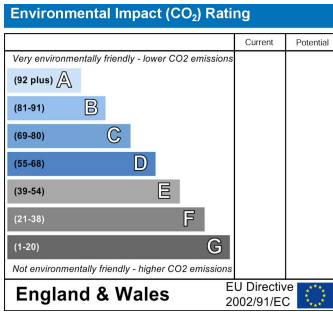
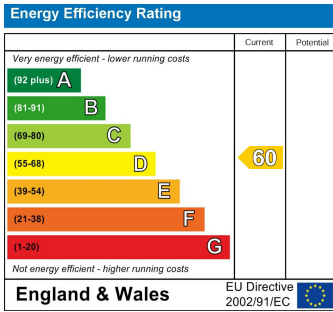
This terraced property consists of kitchen/lounge/diner, shower room, bathroom, and 6 bedrooms. The property also benefits from a front garden and rear garden. The approx. gross internal area is 1450 sq. ft. (Please see floorplan for further details).

Please note, the property is currently tenanted and property will be sold with tenants in situ. Current rental value is £1100.00 PCM. The photographs, virtual tour and floor plan have been provided in order to display its current condition and future potential. The property is sold as seen.

Approx Gross Internal Area
135 sq m / 1450 sq ft



This floorplan is only for illustrative purposes and is not to scale. Measurements of rooms, doors, windows, and any items are approximate and no responsibility is taken for any error, omission or mis-statement. Icons of items such as bathroom suites are representations only and may not look like the real items. Made with Made Snappy 360.



t: 01212709744 e: erdington@goodchilds-uk.com

www.goodchilds-uk.com