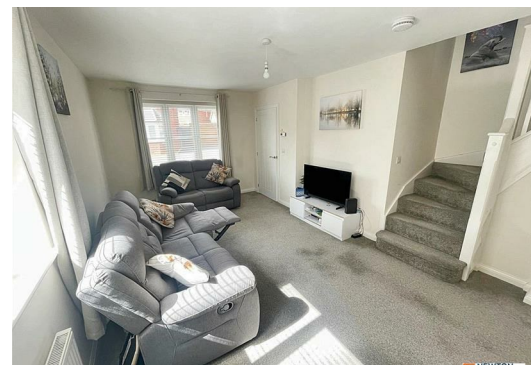




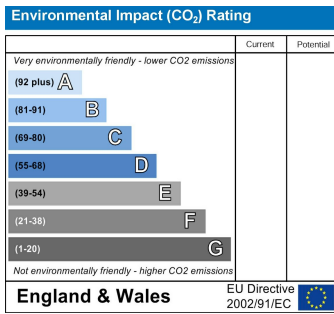
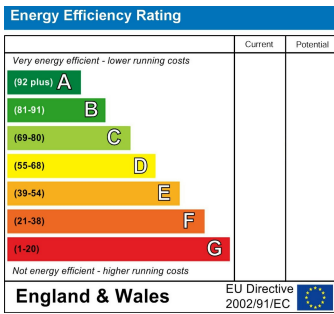
Wilberforce Way,
Birmingham, B24 9AS
£1,500 PCM



NEWTON FALLOWELL are delighted to offer this new build property on Wilberforce Way, Erdington - a charming location for this delightful semi-detached house! This property boasts a spacious reception room, perfect for entertaining guests or relaxing with your family. With three cosy bedrooms, there's plenty of space for everyone to enjoy. The two bathrooms, including an en suite to main bedroom and family bathroom, provide convenience and comfort for all residents.

Located in a vibrant neighbourhood, this house offers the perfect blend of urban living and suburban tranquillity. The rental price of £1500.00 makes this property an attractive option for those looking for a comfortable and stylish home in Birmingham.

Don't miss out on the opportunity to make this house your own - book a viewing today and envision the possibilities that this lovely property has to offer!



t: 01212709744 e: erdington@goodchilds-uk.com

www.goodchilds-uk.com