



Cannock office: Telephone: 01543 62 44 00 E-mail: info@flintandco.com



flint & co

flintandco.com 01543 624400

Client Approval

I/We have checked these Sales Particulars and find them to be an accurate reflection of the property & any fixtures & fittings included. I/We will provide details should any material changes take place in the future.

Signed.....

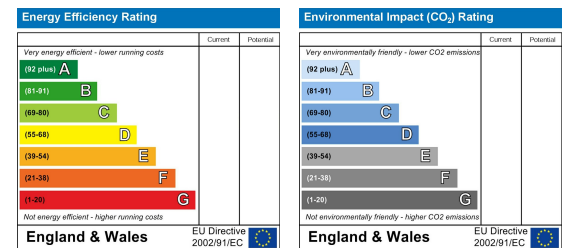
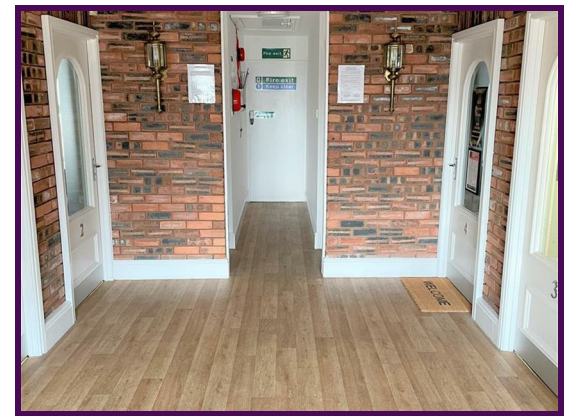
Signed.....

Dated.....



Watling Chambers, 214 Watling Street, Cannock, Cannock, Staffordshire, WS11

£750 Per month



Office Suite at Watling Chambers, 214 Watling Street, Cannock WS11 0BD - AVAILABLE NOW!!
 *** PRICE ON APPLICATION*** subject to signed lease ** photographs for illustration purposes only **
 A prestigious office to rent upon the A5 close to Cannock Town Centre that provides links to M6 toll, M6 and all major road and rail networks.
 The offices are fully decorated to a high standard, fully alarmed, with secure intercom entrance system.
 It benefits from full double glazing, electric heating and separate WC.
 The suite also benefits from having its own secured car park.
 Viewing is essential to appreciate location, quality and size of office space on offer.
 May suit various types of businesses.
 *****PLEASE CALL 01543 624400 FOR MORE INFORMATION*****

Points of Interest

- Prestigious office to let
- Close to M6 and all major road and rail networks
- Private carpark
- Double glazing and electric heating
- VIEWING BY APPOINTMENT ONLY
- Close to Town Centre
- Security intercom system
- Decorated to a high standard
- Premises would suit various types of business
- *****PRICE ON APPLICATION****SUBJECT TO SIGNED LEASE****PHOTOGRAPHS FOR ILLUSTRATION PURPOSES ONLY****

Agents note: Every care has been taken with the preparation of these Sales Particulars but they are for general guidance only and complete accuracy cannot be guaranteed. If there is any point which is of particular importance, professional verification should be sought. The mention of any fixtures, fittings and/or appliances does not imply they are in full efficient working order as they have not been tested.
 All dimension are approximate. Photographs are reproduced for general information and it cannot be inferred that any item shown is included in the sale. These Sales Particulars do not constitute a contract or part of a contract.

Council tax band: Tenure:

