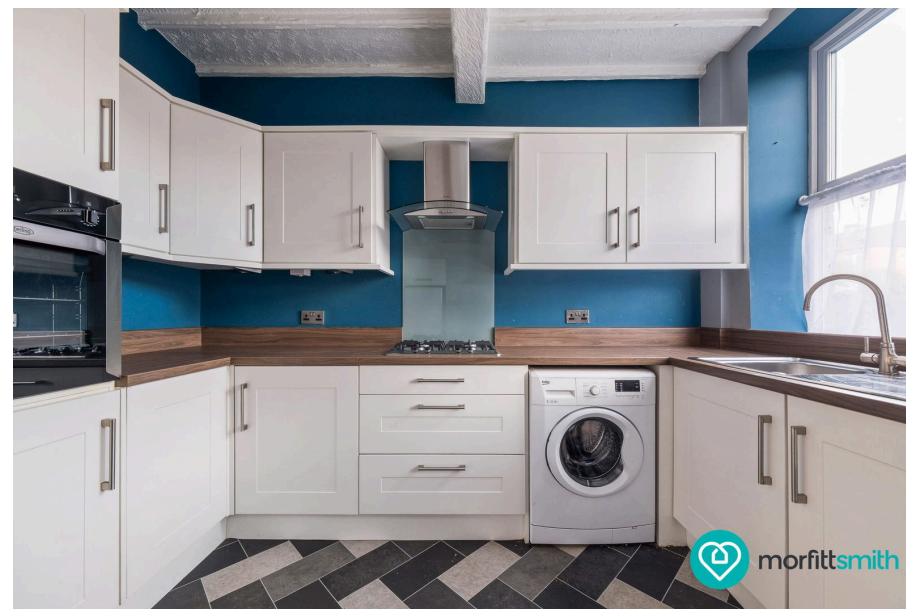
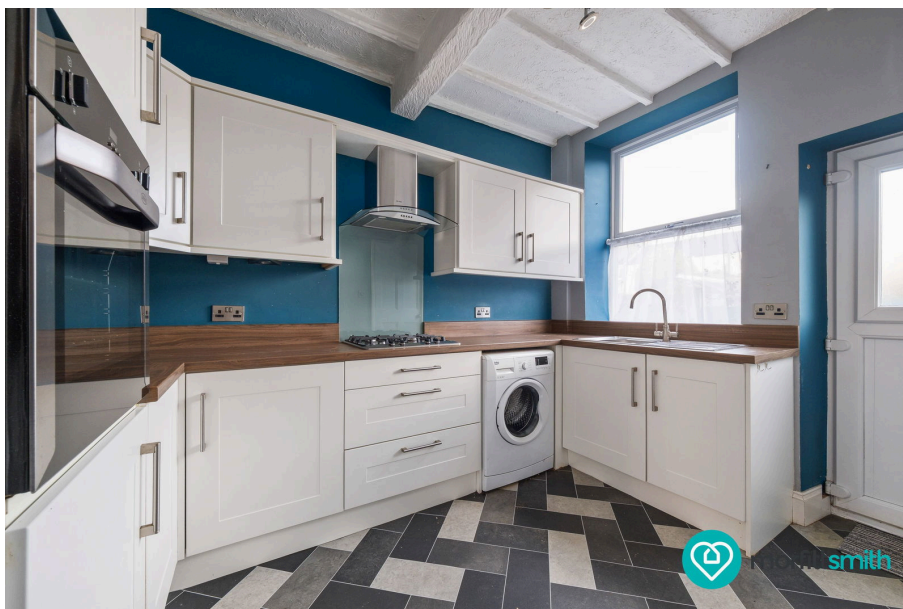




Oakland Road, Hillsborough, S6 4LR

Offers Over £170,000

🛏 2 🚿 1 🛋 1



A charming two-bedroom home in the heart of thriving Hillsborough, Oakland Road offers spacious living, a generous rear garden, and the perfect blend of character and convenience. This is a home ideal for first-time buyers, young families, and those seeking a beautifully balanced lifestyle close to everything Hillsborough has to offer.

Why You'll Love It

Stepping through the front door, you're welcomed into a warm and inviting living room that sets the tone for the rest of the home. It's a cosy, comfortable retreat: ideal for evenings in, hosting friends, or simply relaxing after a long day. The large front-facing window allows natural light to pour in, giving the space an open and uplifting feel while still remaining intimate and homely.

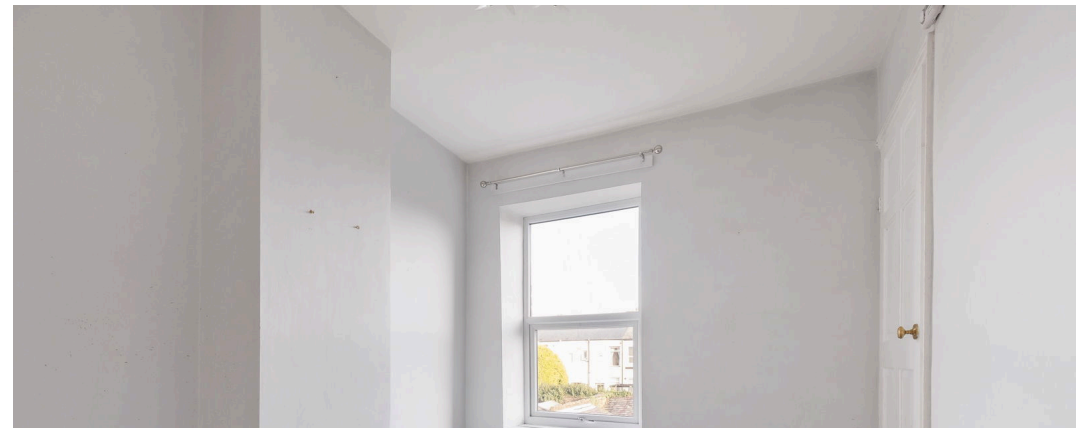
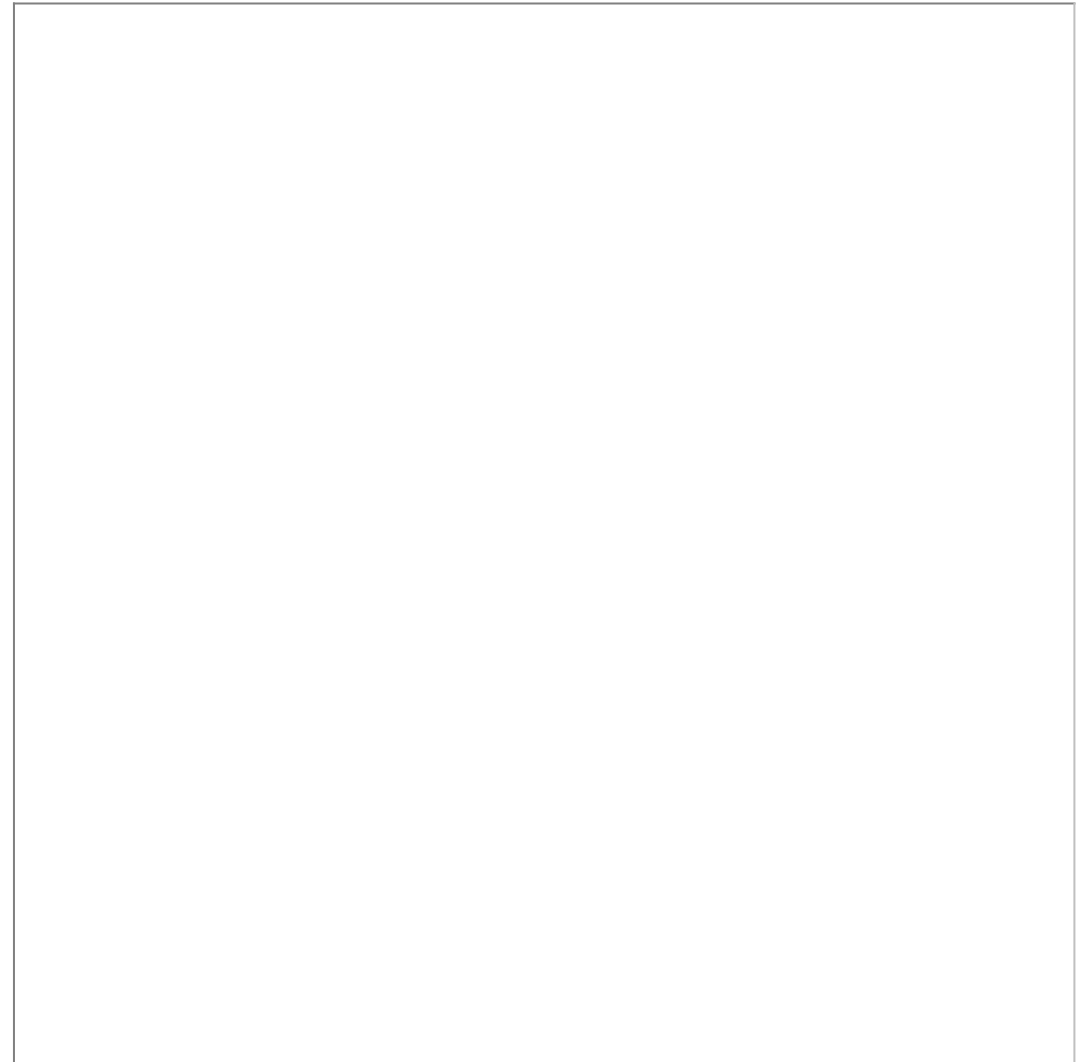
To the rear lies the heart of the home: a spacious kitchen/diner that is perfect for cooking, dining, and gathering. This welcoming space offers room for a family table and serves as a versatile hub for daily life. With its garden views and easy access to the outdoors, it's a joyful environment for morning coffees, weekend brunches, and lively dinner conversations. It's a space that accommodates everyday living with ease.

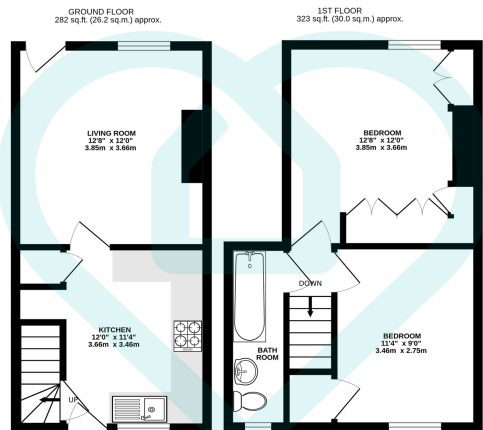
Upstairs you will find two generously sized bedrooms, both offering excellent proportions and plenty of natural light. The primary bedroom delivers a lovely sense of calm, while the second bedroom is perfect for guests, children, hobbies, or home working. A well-appointed family bathroom completes the first floor, offering a fresh and functional space with everything you need.

The rear garden is one of this property's standout features. Larger than expected and offering plenty of room for outdoor living, it's an ideal retreat for summer barbecues, gardening, play, or quiet moments of relaxation. With an outhouse and additional storage areas, practicalities are exceptionally well catered for. The garden feels private, manageable, and full of potential.

Why We Love It

Hillsborough continues to shine as one of Sheffield's most popular



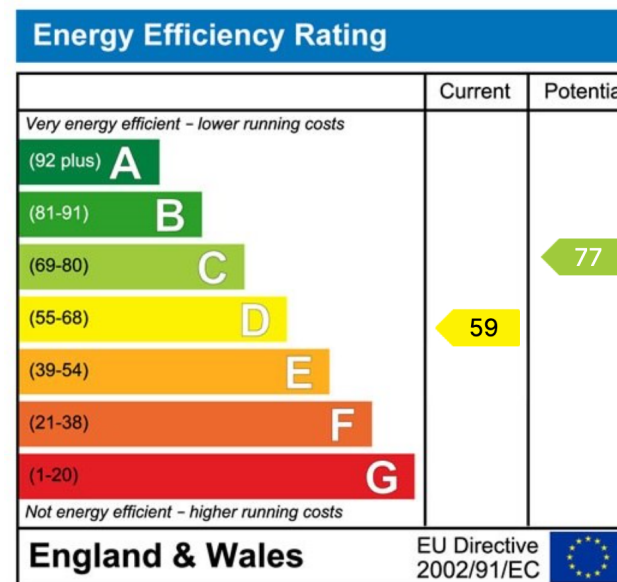
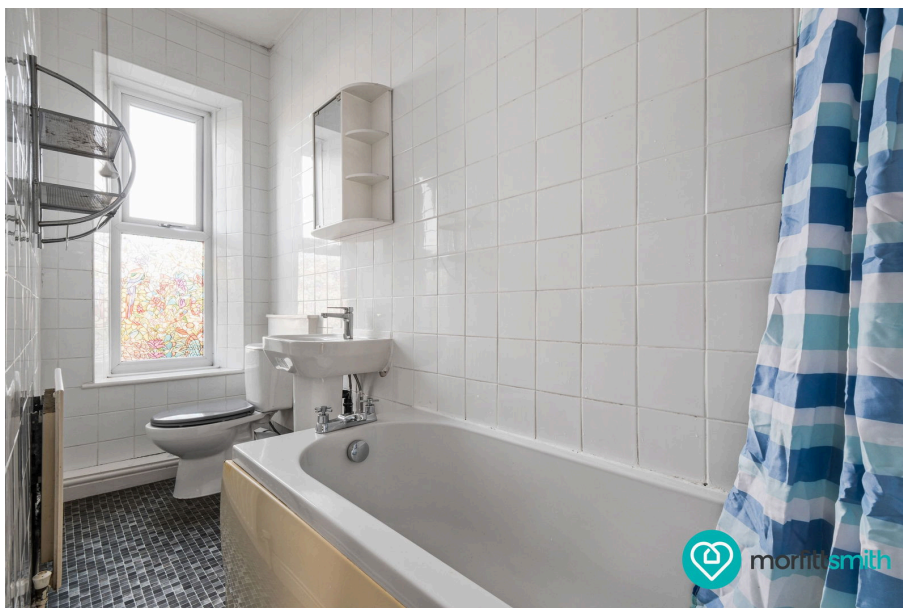


TOTAL FLOOR AREA : 605 sq.ft. (56.2 sq.m.) approx.

This floor plan is for illustrative purposes only. All measurements and layouts are approximations and do not necessarily capture the precise specifications of the property. No responsibility is taken for any error, omission, or misstatement. We always recommend viewing in person to confirm the exact floor plan of a property. Made with Metropix.



- No Chain
- Two Bedrooms
- Great For First Time Buyers
- Popular Hillsborough Location
- On Street Parking
- Great Transport Links
- Cafes, Pubs and Restaurants In Walking Distance
- Good Sized Rear Garden
- Near Green Space
- Mid Terrace Home



Sales | Lettings | New Homes

VAT Reg Number: 191 3588 84
Company Reg Number: 08610489
Company Reg Address: 67 Middlewood Road, Hillsborough, Sheffield, S6 4GX.

The MorfittSmith Building
67 Middlewood Road
Hillsborough
Sheffield
S6 4GX

Get in touch - arrange an appointment

