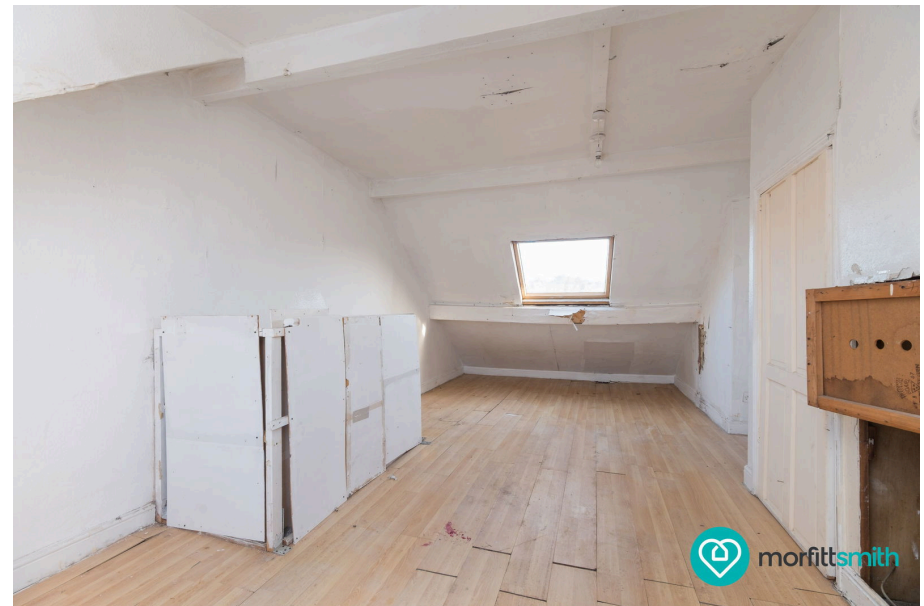




Penistone Road North, Sheffield, S6 1QA

£127,500

3 1 2



A Three-Bedroom Terrace Packed with Potential in a Brilliant Hillsborough Location

Set across three generous levels, this sizeable terrace offers an exciting opportunity for renovation. With two reception rooms, three excellent bedrooms, and a rear garden ready to be transformed, this is a superb project for anyone looking to create a spacious modern home in a popular and convenient spot.

Why We Love It

Hillsborough remains one of Sheffield's most well-connected and sought-after areas, offering fantastic access to shops, cafés, local parks, and excellent commuter links. With the Supertram, major bus routes, and a wealth of everyday amenities close by, it's an ideal base for anyone wanting convenience, community, and quick travel across the city.

Why You'll Love It

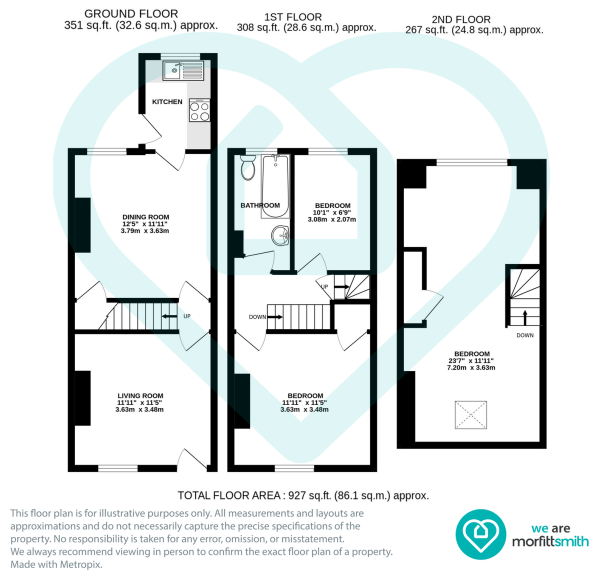
This spacious three-bedroom terrace is full of potential, offering generous room sizes across all three floors and a layout that lends itself beautifully to modernisation. The ground floor enjoys two well-proportioned reception rooms, giving you the flexibility to create an inviting living space and a separate dining or entertaining area. The kitchen leads directly out to the rear garden, which, once cleared and redesigned, could become a wonderful outdoor extension of the home.

Upstairs features two excellent bedrooms and a bathroom suite, while the second floor reveals a standout attic bedroom with impressive space and natural light, a superb foundation for a main bedroom retreat. With its size, structure, and scope for transformation, this property is a fantastic blank canvas ready to be shaped into a stylish and comfortable home.

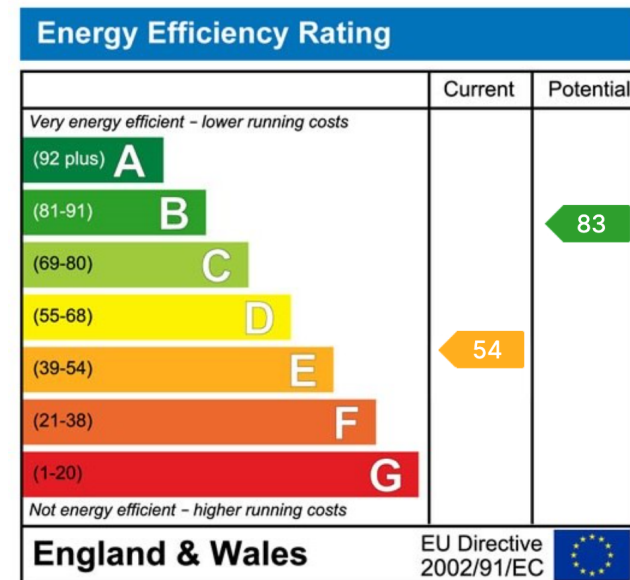
Tenure: Leasehold

Lease Start Date 10 Apr 1900





- Three-Storey Stone-Fronted Terrace
- Generous Dining Room with Rear Aspect
- Three Good-Sized Bedrooms
- Private Rear Garden
- Superb Public Transport Links
- Spacious Living Room to the Front
- Kitchen with Rear Garden Access
- Large Attic Bedroom with Dormer Window
- Walking Distance to Hillsborough Amenities
- Ideal Renovation



Sales | Lettings | New Homes

VAT Reg Number: 191 3588 84
Company Reg Number: 08610489
Company Reg Address: 67 Middlewood Road, Hillsborough, Sheffield, S6 4GX.

The MorfittSmith Building
67 Middlewood Road
Hillsborough
Sheffield
S6 4GX

Get in touch - arrange an appointment

0114 232 1764
 sales@morfittsmith.co.uk
lettings@morfittsmith.co.uk
newhomes@morfittsmith.co.uk
 www.morfittsmith.co.uk

@MorfittSmith
 @MorfittSmith
 MorfittSmith Estate & Letting Agent