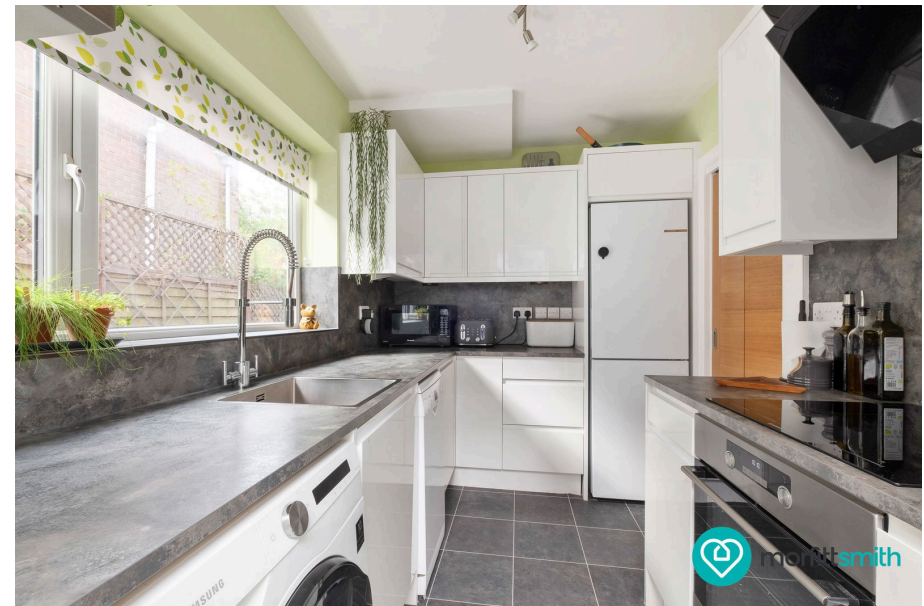




Robertson Road, Walkley, Sheffield, S6 5DX

Offers Over £280,000

3 1 1



Why We Love It

Situated in the popular residential area of Walkley, this charming 3-bedroom house offers the perfect blend of convenience and comfort. The location boasts excellent amenities, including good local schools, regular public transport, and close proximity to hospitals, universities, Sheffield City Centre, and key roads. In addition to its urban advantages, this location offers beautiful country walks in the nearby Rivelin Valley, providing a peaceful escape into nature.

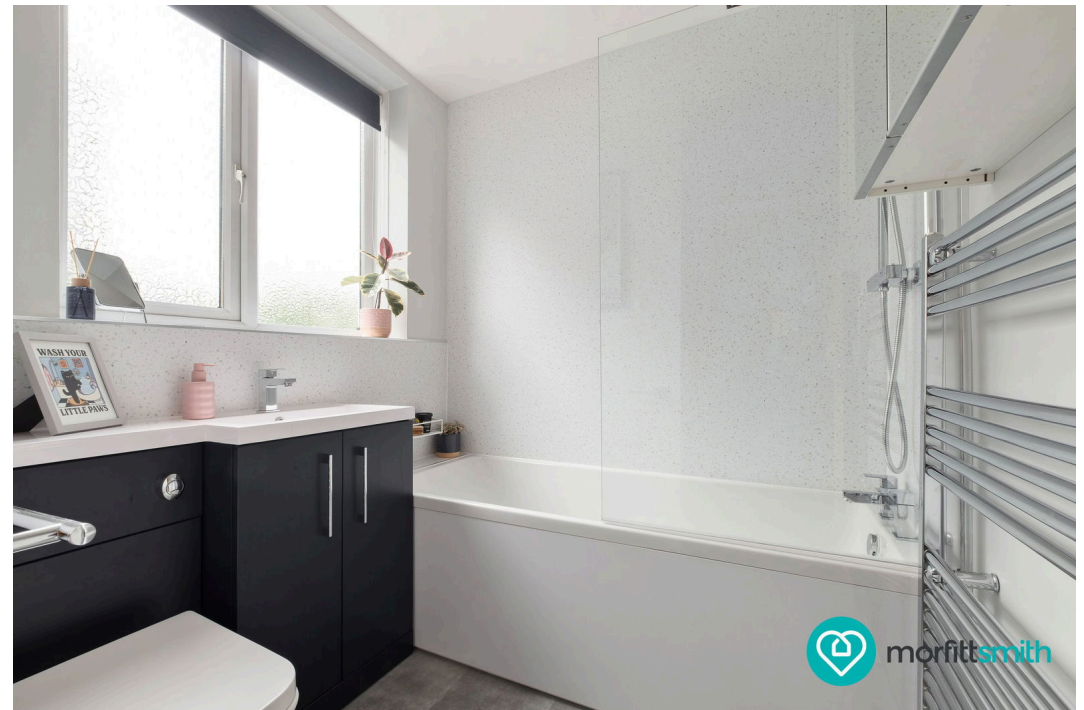
Why You'll Love It

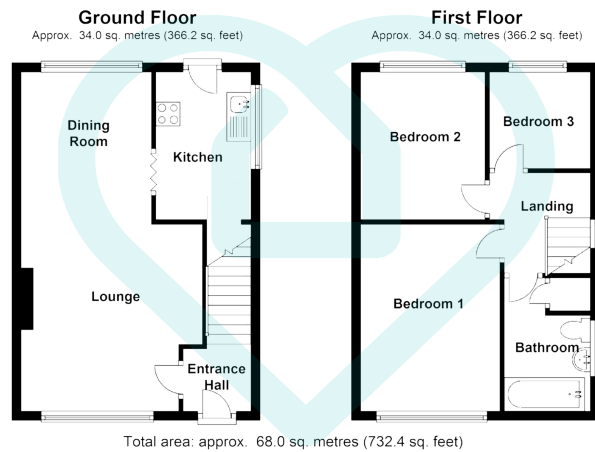
The property features both a gated driveway and a garage, with the latter recently upgraded with a new roof. The exterior showcases an attractive and generous tiered rear garden, complete with a central lawn and a delightful seating area at the rear—ideal for BBQs, gardening, and relaxing in the sun. Lovingly maintained with plants and shrubbery.

Inside, the well-proportioned downstairs area includes a spacious lounge/dining room, filled with natural light from large windows on both sides. The dining area provides seamless access to the recently renovated kitchen, which has been finished to a tasteful and high standard, perfect for culinary enthusiasts and family meals.

Upstairs, you'll find three well-proportioned bedrooms. Two of these are doubles, offering ample space for relaxation and rest. The third bedroom is a versatile single, suitable for use as an office, dressing room, or nursery, catering to your family's needs. The floor plan is completed by an attractive and modern three-piece bathroom suite, designed for comfort and style.

Robertson Road is more than just a house; it's a home where your family can grow and thrive, combining convenience, comfort, and a welcoming community. Don't miss the opportunity to make this exceptional property your own.

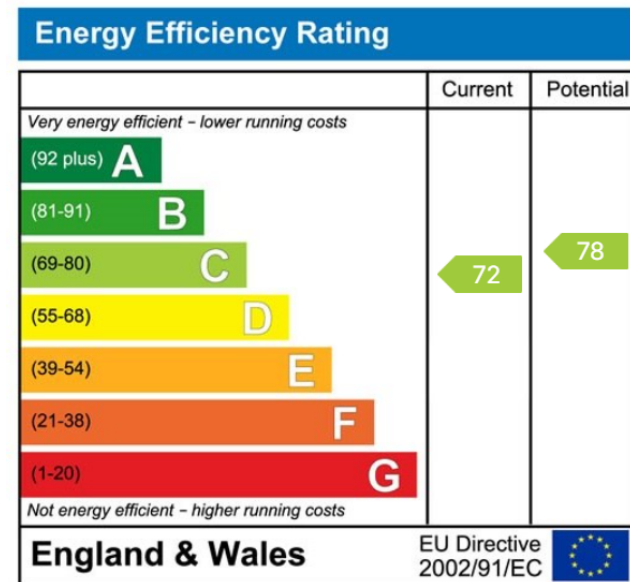
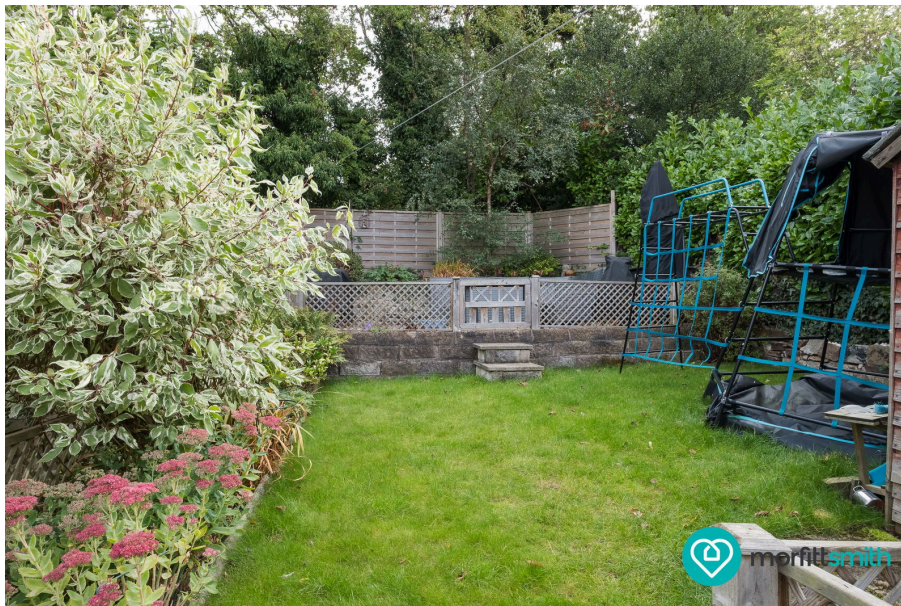




This floor plan is for illustrative purposes only. All measurements and layouts are approximations and do not necessarily capture the precise specifications of the property. No responsibility is taken for any error, omission, or misstatement. We always recommend viewing in person to confirm the exact floor plan of a property. Made with Metropix.



- Highly Sought-After Location
- Excellent Amenities
- Great Transport Links
- Proximity to Main Roads
- Good Local Schools
- Beautiful Outdoor Spaces
- Ample Parking
- Spacious Interior
- Modern Kitchen:
- Generous Garden



Sales | Lettings | New Homes

VAT Reg Number: 191 3588 84
Company Reg Number: 08610489
Company Reg Address: 67 Middlewood Road, Hillsborough, Sheffield, S6 4GX.

The MorfittSmith Building
67 Middlewood Road
Hillsborough
Sheffield
S6 4GX

Get in touch - arrange an appointment



0114 232 1764



sales@morfittsmith.co.uk
lettings@morfittsmith.co.uk
newhomes@morfittsmith.co.uk



www.morfittsmith.co.uk



@MorfittSmith



@MorfittSmith



MorfittSmith
Estate & Letting Agent