



Minto Road, Hillsborough, Sheffield, S6 4GL

Offers In Region Of £250,000

🛏 3 🍳 2 🛋 2



Why You'll Love It

Every inch of this home has been thoughtfully considered, from the moment you step through the charming front doorway. The ground floor boasts a beautiful bay-fronted living room filled with natural light, offering a welcoming space to relax. The rear of the property opens into a stylish kitchen/diner with striking dark cabinetry, wood-effect counters, and sleek metro tiles. It's the perfect space for hosting, with ample room for dining and easy access to the utility area just beyond.

The first floor comprises a serene primary bedroom with neutral tones and an immaculate ensuite shower room. A second generous bedroom and a well-appointed three-piece family bathroom complete the level.

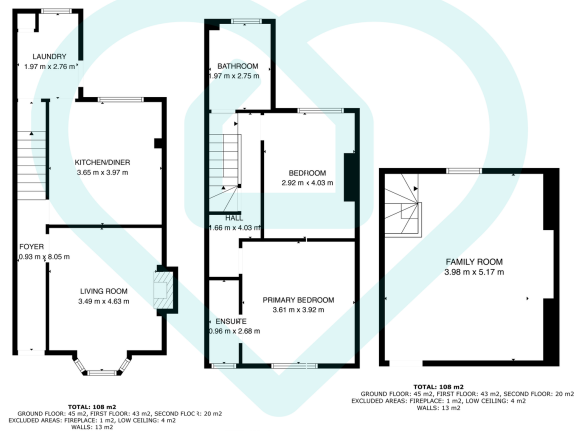
The top floor is a real standout: a vast and versatile family room with skylight views, ideal as a fourth bedroom, studio, or playroom.

Outside, the garden is a tranquil green escape with mature foliage, a lawned area, and space for seating, offering a wonderful spot to unwind in the warmer months.

Why We Love Hillsborough

Hillsborough continues to be one of Sheffield's most desirable neighbourhoods, and it's easy to see why. With charming local cafés, independent shops, and the beautiful Hillsborough Park all just moments away, this area strikes a perfect balance between community spirit and urban convenience. Excellent public transport links, including nearby Supertram stops make getting around the city effortless, while well-regarded schools and local amenities are all within walking distance.

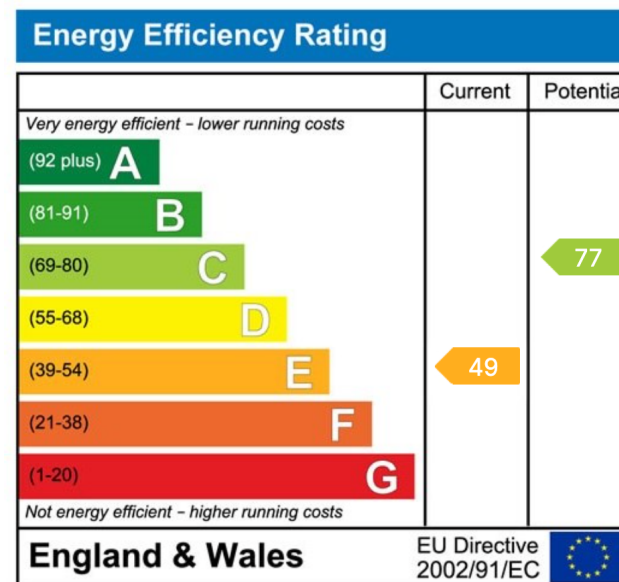




This floor plan is for illustrative purposes only. All measurements and layouts are approximations and do not necessarily capture the precise specifications of the property. No responsibility is taken for any error, omission, or misstatement. We always recommend viewing in person to confirm the exact floor plan of a property. Made with Metropix.



- Bay-Fronted Living Room with Feature Fireplace
- Peaceful and Sought-After Hillsborough Street
- Versatile Loft Family Room/Bedroom
- Easy Access to Supertram Network
- Walking Distance to Local Schools and Amenities
- Spacious Kitchen/Diner with Elegant Design
- Elegant Neutral Décor Throughout
- Ideal for Families or Professionals
- Close to Hillsborough Park and Shops
- Ready to Move Straight In



Sales | Lettings | New Homes

VAT Reg Number: 191 3588 84
Company Reg Number: 08610489
Company Reg Address: 67 Middlewood Road, Hillsborough, Sheffield, S6 4GX.

The MorfittSmith Building
67 Middlewood Road
Hillsborough
Sheffield
S6 4GX

Get in touch - arrange an appointment



0114 232 1764



sales@morfittsmith.co.uk
lettings@morfittsmith.co.uk
newhomes@morfittsmith.co.uk



www.morfittsmith.co.uk



@MorfittSmith



@MorfittSmith



MorfittSmith
Estate & Letting Agent