





Leake Road, Sheffield, S6 1SJ

£190,000

3 1 2





## Why You'll Love It

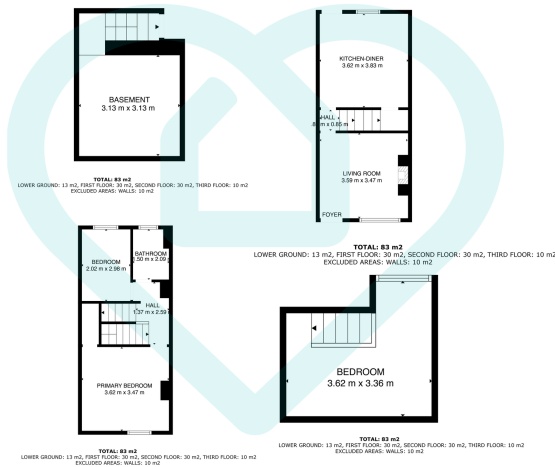
From the moment you arrive at Leake Road, it's clear this is a home that has been lovingly cared for and thoughtfully updated. The exterior welcomes you with classic charm, framed by neat stonework and a quiet street scene that sets a peaceful tone. Once inside, that sense of quality and comfort continues throughout. The ground floor opens with a cosy yet stylish front living room—a gorgeous space with beautiful natural light. Whether you're relaxing after a long day, entertaining guests, or enjoying a quiet Sunday morning, this space immediately feels like home. A central chimney breast could accommodate a feature fireplace or media wall. To the rear of the ground floor is a spacious kitchen/diner—a truly functional and stylish hub of the home. This room offers ample space for a dining table, making it perfect for family meals or hosting friends.

The kitchen itself is smartly appointed with a blend of modern units and worktops, complemented by some integrated appliances and clean finishes. The rear door provides seamless access to the garden, while a stairwell beneath leads down to a useful cellar—ideal for additional storage, a utility zone, or even further development subject to the usual consents.

Upstairs on the first floor, you'll find two bedrooms and a stunning family shower room. The primary bedroom is positioned to the front of the property—a generous double with plenty of space for wardrobes and bedroom furnishings. Light floods the room through a wide window, creating a bright and serene atmosphere. The second bedroom, positioned at the rear, is a good sized single or compact small double that would make an ideal child's bedroom, guest room, or home office depending on your needs. The shower room is a real standout feature—elegantly designed and immaculately finished. Sleek tiling, a large walk-in shower, contemporary fixtures, and a minimalist aesthetic give this space a real sense of luxury, offering a spa-like experience right at home. The top floor reveals a fantastic third bedroom, this space is a brilliant addition to the home and offers excellent flexibility. Whether used as a spacious double bedroom, a peaceful retreat, a creative studio, or even a teenager's den, it's a room that feels both private and inspiring.



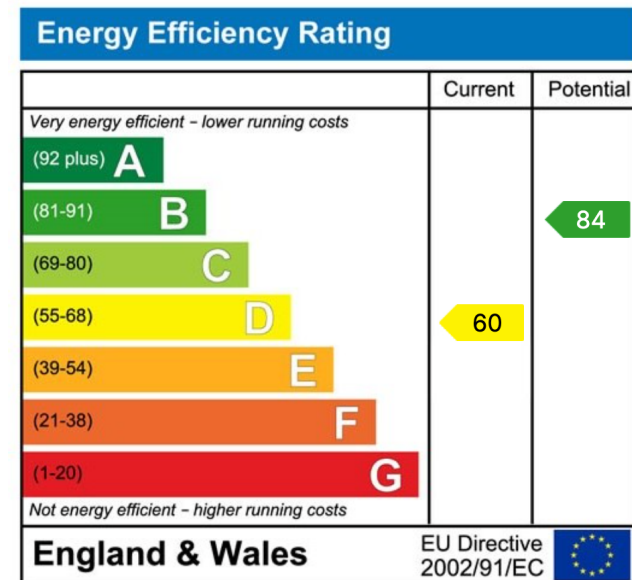




This floor plan is for illustrative purposes only. All measurements and layouts are approximations and do not necessarily capture the precise specifications of the property. No responsibility is taken for any error, omission, or misstatement. We always recommend viewing in person to confirm the exact floor plan of a property. Made with Metropix.



- No Chain
- Immaculately Presented Throughout
- Three Good Sized Bedrooms
- Great For First Time Buyers
- Lovely Rear Garden
- Great Transport Links
- Surrounded By Green Space
- Good School Choices
- Close To Cafes, Shops, Pubs
- Great For Commuters and Restaurants



## Sales | Lettings | New Homes

VAT Reg Number: 191 3588 84  
Company Reg Number: 08610489  
Company Reg Address: 67 Middlewood Road, Hillsborough, Sheffield, S6 4GX.

The MorfittSmith Building  
67 Middlewood Road  
Hillsborough  
Sheffield  
S6 4GX

## Get in touch - arrange an appointment



0114 232 1764



sales@morfittsmith.co.uk  
lettings@morfittsmith.co.uk  
newhomes@morfittsmith.co.uk



www.morfittsmith.co.uk



@MorfittSmith



@MorfittSmith



MorfittSmith  
Estate & Letting Agent