



Wood Road, Sheffield, S6 4LW

Offers In Region Of £230,000

3 1 2



A charming and deceptively spacious Hillsborough terrace – 53 Wood Road is a beautifully presented home with flexible living over three floors.

Nestled on a quiet residential street just moments from the vibrant heart of Hillsborough, this three-bedroom mid-terrace is full of surprises. From its expansive kitchen diner to its versatile loft space, this home is perfect for first-time buyers, young families or anyone seeking extra space in a thriving Sheffield suburb.

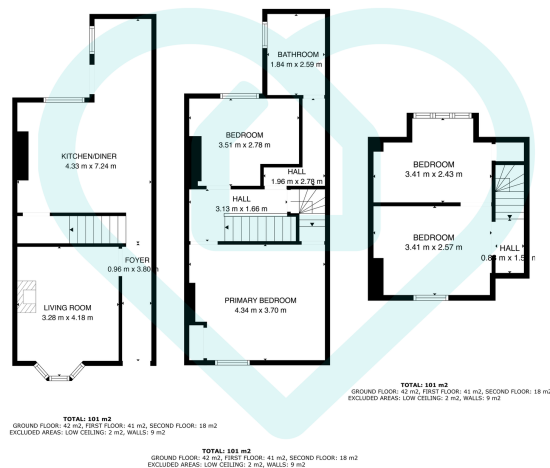
The ground floor welcomes you with a cosy front-facing living room – ideal for relaxing after a busy day – and opens into a stunning open-plan kitchen diner. With modern fittings, loads of worktop space and room for a generous dining area, it's the perfect space for hosting or family life, with direct access to the rear garden. There is also a well appointed cellar, great for storage or as a utility room.

The first floor hosts a spacious primary bedroom to the front, a second double bedroom to the rear, and a well-sized family bathroom. Head up to the top floor and you'll find a smartly converted loft space that offers a third bedroom plus an occasional room – ideal for a home office, dressing room or nursery.

Outside, there's a low-maintenance garden with great potential – whether you're looking for a peaceful escape or a sociable entertaining space.

Hillsborough is one of Sheffield's most connected and characterful neighbourhoods, known for its independent shops, green spaces, and superb transport links – including the Supertram, excellent bus routes, and easy access to the city centre and the Peaks.





This floor plan is for illustrative purposes only. All measurements and layouts are approximations and do not necessarily capture the precise specifications of the property. No responsibility is taken for any error, omission, or misstatement. We always recommend viewing in person to confirm the exact floor plan of a property. Made with Metropix.



- Three bedrooms plus occasional room
- Stylish and spacious mid-terrace
- Stunning open-plan kitchen diner
- Cosy front-facing living room
- Versatile occasional room – ideal for office or nursery
- Generous first-floor bathroom
- Low maintenance rear garden
- Quiet street in central Hillsborough
- Excellent transport links & Supertram nearby
- Close to shops, cafes, parks & schools



Sales | Lettings | New Homes

VAT Reg Number: 191 3588 84
 Company Reg Number: 08610489
 Company Reg Address: 67 Middlewood Road, Hillsborough, Sheffield, S6 4GX.

The MorfittSmith Building
 67 Middlewood Road
 Hillsborough
 Sheffield
 S6 4GX

Get in touch - arrange an appointment



0114 232 1764
sales@morfittsmith.co.uk
lettings@morfittsmith.co.uk
newhomes@morfittsmith.co.uk
www.morfittsmith.co.uk



@MorfittSmith
 @MorfittSmith
 MorfittSmith
 Estate & Letting Agent