



Dixon Road, Hillsborough, Sheffield, S6 4FY

£140,000

🛏 1 🚿 1 🚿 1



Why You'll Love It

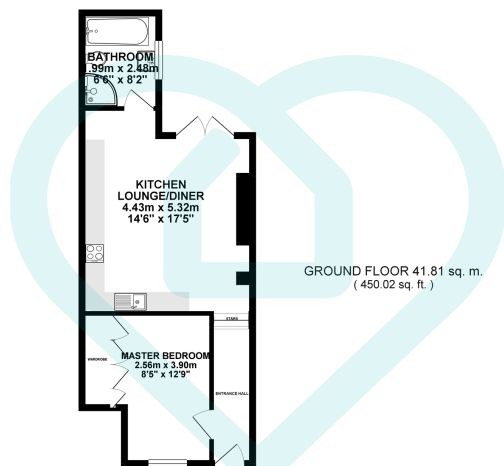
Nestled on a popular residential road just moments from the heart of Hillsborough, Dixon Road presents an elegant and low-maintenance apartment tailored for contemporary living. Situated on the ground floor, this one-bedroom home combines characterful features with a modern open-plan layout, creating a welcoming and versatile space to relax and entertain. As you enter the apartment via a private entrance, you are greeted by a light and airy interior that makes exceptional use of the space on offer. The open-plan kitchen/diner/living area is the star of the show – a stylish and sociable space designed to suit modern lifestyles. The kitchen is well-appointed with sleek units and ample worktop space, making it ideal for whipping up dinner for friends or enjoying a quiet evening in. Flowing straight out to the outside space a great space for a relaxed evening in the sun or pottering around in the day.

The bedroom to the front is a generous double, comfortably accommodating furniture and offering a tranquil retreat at the end of the day. The bathroom is modern and thoughtfully arranged, featuring a sleek white suite with a shower over the bath – perfect for both a quick morning routine and a relaxing soak. Tastefully decorated throughout, the apartment boasts contemporary tones, uPVC double glazing, and gas central heating – providing all the essentials for efficient, modern living. There's also on-street parking available right outside the building and excellent access to nearby public transport. Whether you're a professional looking for an easy commute, a couple seeking your first home, or an investor in search of a high-demand rental location, Dixon Road delivers style and convenience in equal measure.

Why We Love It

Hillsborough is one of Sheffield's most cherished neighbourhoods – and it's easy to see why. At Dixon Road, you're perfectly positioned to enjoy the best the area has to offer, with an abundance of green spaces, transport links, independent shops, and lively cafés right on your doorstep. Just a short stroll away is the beloved Hillsborough Park, a sprawling green space that's perfect for weekend walks, picnics, and community events. The park is also home to the historic Hillsborough Library and the recently restored Hillsborough Coach House, a cultural hub hosting exhibitions, workshops, and local gatherings.

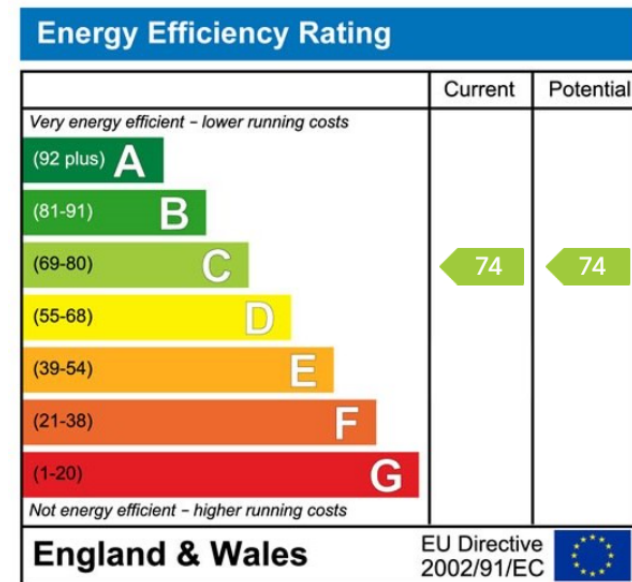




Whilst every attempt has been made to ensure the accuracy of the floor plan contained here, measurements of doors, windows, rooms and any other items are approximate and no responsibility is taken for any error, omission or mis-statement. This plan is for illustrative purposes only and should be used as such by any prospective tenant/ purchaser.

Made with Metropix, morfittsmith
Estate & Letting Agent

- One Bedroom Apartment
- Ground Floor
- Outside Space
- Well Presented Throughout
- Popular Residential Location
- Close To Independent Local Shops
- Great Public Transport Links
- On Street Parking
- Storage Throughout The Property
- Great For First Time Buyers and Downsizers



Sales | Lettings | New Homes

VAT Reg Number: 191 3588 84
Company Reg Number: 08610489
Company Reg Address: 67 Middlewood Road, Hillsborough, Sheffield, S6 4GX.

The MorfittSmith Building
67 Middlewood Road
Hillsborough
Sheffield
S6 4GX

Get in touch - arrange an appointment



0114 232 1764



sales@morfittsmith.co.uk
lettings@morfittsmith.co.uk
newhomes@morfittsmith.co.uk



www.morfittsmith.co.uk



@MorfittSmith



@MorfittSmith



MorfittSmith
Estate & Letting Agent