



White Croft Works, 69 Furnace Hill, S3 7AH

Offers In Region Of £100,000

0 1 1



White Croft Works, Sheffield City Centre – A Stylish Studio in the Heart of the Action

First Floor | No Onward Chain | Character Conversion | Perfect City Base or Investment

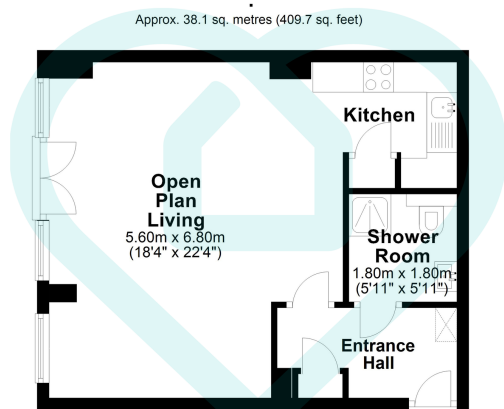
Tucked away in a striking converted development just moments from the buzz of West Street and Kelham Island, this apartment at White Croft Works is a sleek and spacious studio apartment that blends industrial charm with modern convenience. Set on the first floor of this secure gated community, it offers effortless access to the city's shops, cafés, and tram network – making it an ideal spot for professionals, students, or investors alike.

Step through the secure communal entrance and into your own private space. The apartment opens into a welcoming entrance hall that leads to a versatile open-plan living area that comfortably accommodates lounge, dining, and sleeping zones. Large windows and French doors lead to a good sized balcony and bring in plenty of natural light and create a bright, airy atmosphere.

Tucked to one side, the modern kitchen is smartly laid out with contemporary cabinetry and practical worktop space – perfect for day-to-day living. The apartment is completed by a separate shower room, finished in a clean, neutral style.

With no onward chain, immediate availability, and a vibrant city location, this apartment is an excellent opportunity for anyone seeking stylish urban living or a strong-performing buy-to-let in one of Sheffield's most desirable postcodes.



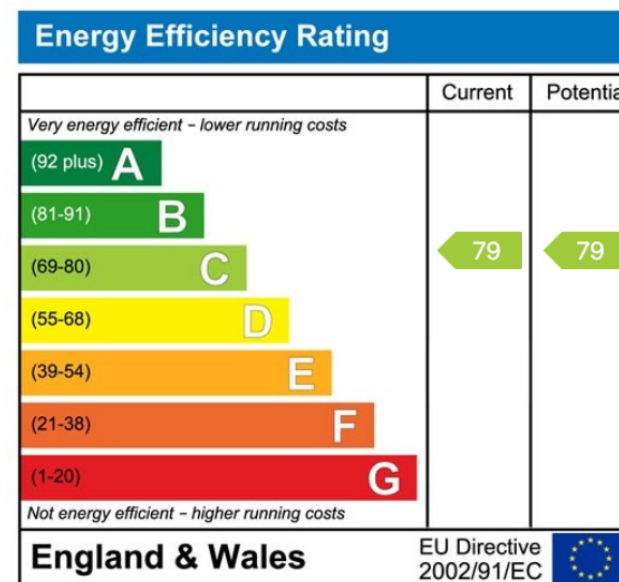


Total area: approx. 38.1 sq. metres (409.7 sq. feet)

This floor plan is for illustrative purposes only. All measurements and layouts are approximations and do not necessarily capture the precise specifications of the property. No responsibility is taken for any error, omission, or misstatement. We always recommend viewing in person to confirm the exact floor plan of a property. Made with Metropix.



- Stylish first-floor studio apartment
- Located in a secure gated development
- Spacious open-plan living/sleeping space
- Bright interior with French doors leading to balcony
- Ideal for first-time buyers, students, or investors
- Offered with no onward chain apartment
- Character conversion with industrial charm
- Modern fitted kitchen with integrated appliances
- Contemporary shower room in neutral décor
- Walking distance to West Street, Kelham Island & the Universities



Sales | Lettings | New Homes

VAT Reg Number: 191 3588 84
Company Reg Number: 08610489
Company Reg Address: 67 Middlewood Road, Hillsborough, Sheffield, S6 4GX.

The MorfittSmith Building
67 Middlewood Road
Hillsborough
Sheffield
S6 4GX

Get in touch - arrange an appointment



0114 232 1764



sales@morfittsmith.co.uk
lettings@morfittsmith.co.uk
newhomes@morfittsmith.co.uk



www.morfittsmith.co.uk



@MorfittSmith



@MorfittSmith



MorfittSmith
Estate & Letting Agent