

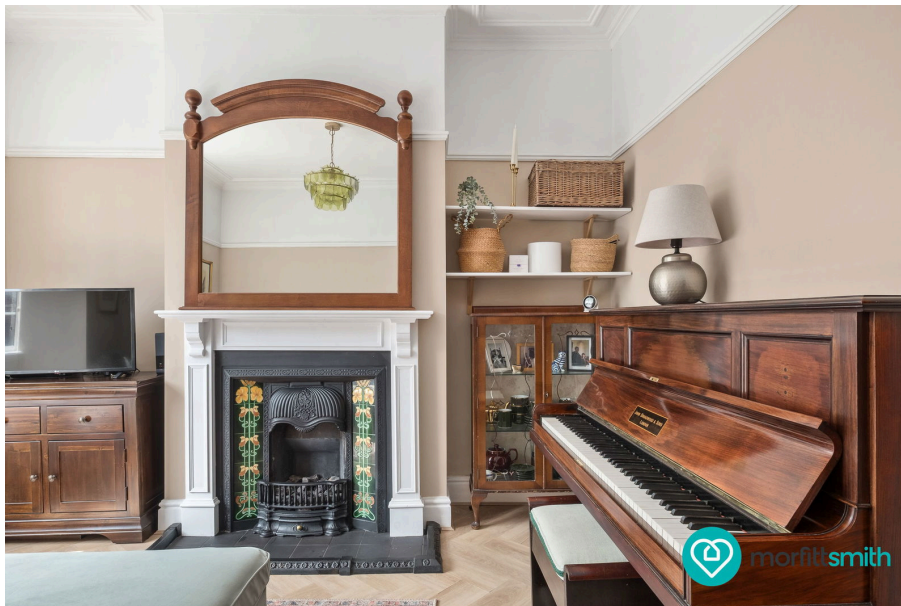




Willis Road, Hillsborough, Sheffield, S6 4FJ

Offers In Region Of £240,000

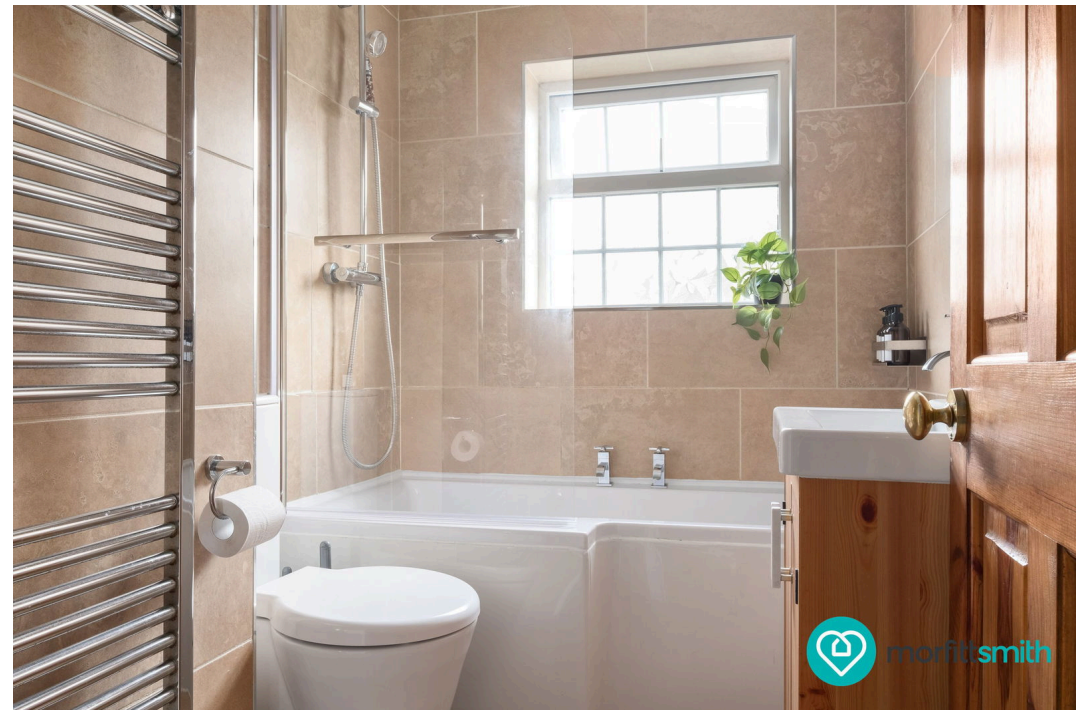
3 1 1



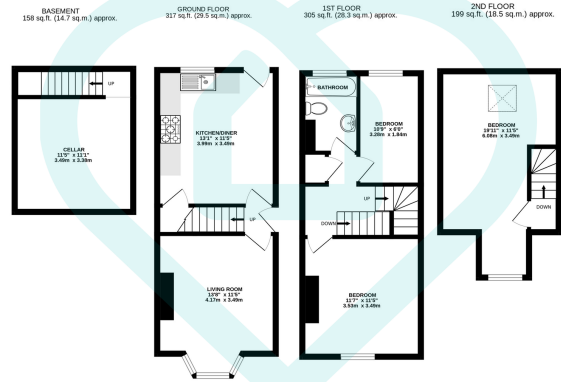


## Why You'll Love It

Set on a quiet residential street in an ever-popular Sheffield neighbourhood, Willis Road has been lovingly maintained and stylishly updated to offer a wonderful home across three storeys. With bright and airy living spaces, three good sized bedrooms, and a delightful private garden, it is the ideal base for first-time buyers, young professionals, or growing families. From the moment you step through the front door, it's clear that this home has been cared for. The traditional layout is enhanced by tasteful décor and subtle modernisation, with a neutral palette and lovely finishes throughout. You are welcomed by a charming living room to the front of the home – a cosy yet spacious setting for quiet evenings or entertaining guests. An inviting and bright space with a large front-facing bay window that floods the room with natural light. There's plenty of room for a generous sofa setup and media unit, while the tasteful, neutral décor creates a calming and contemporary atmosphere. It's the ideal place to unwind after a long day. This flows effortlessly to the rear kitchen/diner: a warm, open-plan heart of the home, a warm and sociable hub. The kitchen features cabinetry, integrated appliances and worktops, space for a dining area that easily accommodates a family table. A door leads directly out to the garden, making this space perfect for both everyday living and entertaining. The kitchen/diner also benefits from cellar access and rear door out into the garden. A tranquil, private outdoor space ideal for morning coffee, summer dining, or simply enjoying the fresh air in peace. The outside space also benefits from a brick built storage space, great for bikes or BBQs. Upstairs, the first floor hosts two generously sized bedrooms and a modern shower room, with the top floor revealing a large, beautifully lit double attic bedroom. With no compromise on space or presentation, and set in a fantastic Sheffield community, this home is a must-see.



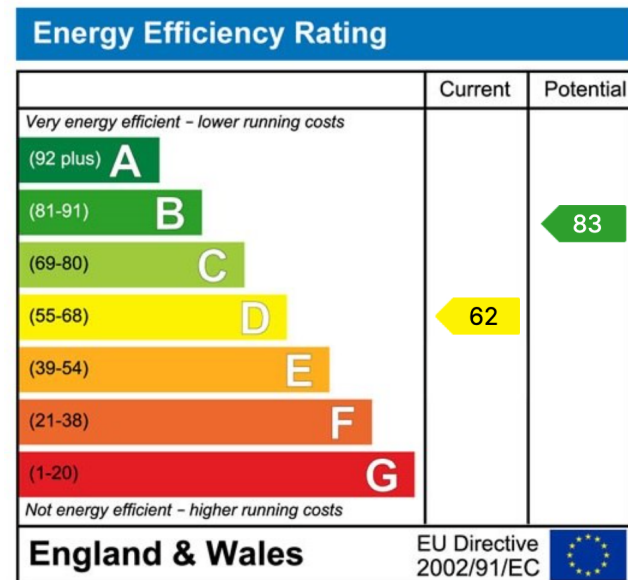




This floor plan is for illustrative purposes only. All measurements and layouts are approximations and do not necessarily capture the precise specifications of the property. No responsibility is taken for any error, omission, or misstatement. We always recommend viewing in person to confirm the exact floor plan of a property. Made with Metropix.



- Community Setting
- Key Road Access
- Great Transport Links
- Private Rear Garden
- Beautifully Presented and Well Maintained
- Great For First Time Buyers
- Close To Shops, Cafes and Pubs
- Close To Green Space
- Located On A Quiet Residential Street
- Three Bedroom End Terrace



## Sales | Lettings | New Homes

VAT Reg Number: 191 3588 84  
 Company Reg Number: 08610489  
 Company Reg Address: 67 Middlewood Road, Hillsborough, Sheffield, S6 4GX.

The MorfittSmith Building  
 67 Middlewood Road  
 Hillsborough  
 Sheffield  
 S6 4GX

## Get in touch - arrange an appointment



0114 232 1764



sales@morfittsmith.co.uk  
 lettings@morfittsmith.co.uk  
 newhomes@morfittsmith.co.uk



www.morfittsmith.co.uk



@MorfittSmith



@MorfittSmith



MorfittSmith  
 Estate & Letting Agent