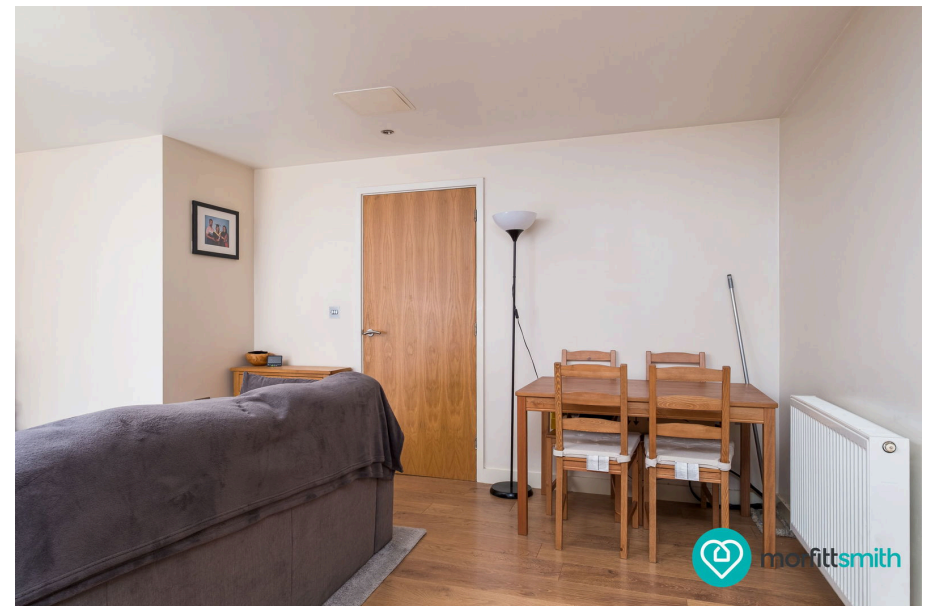
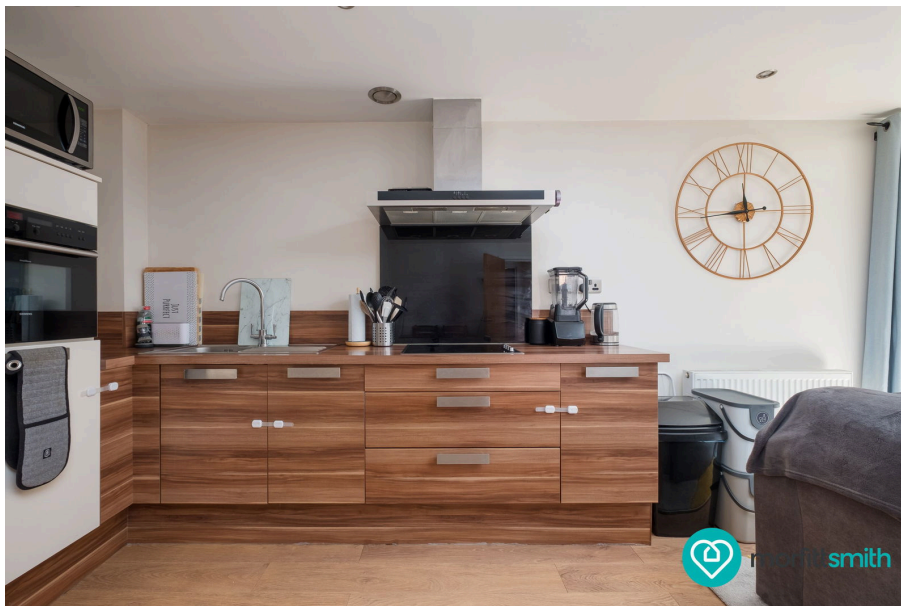




# Middlewood Lodge, 1, Middlewood Rise, Sheffield, S6 1UR

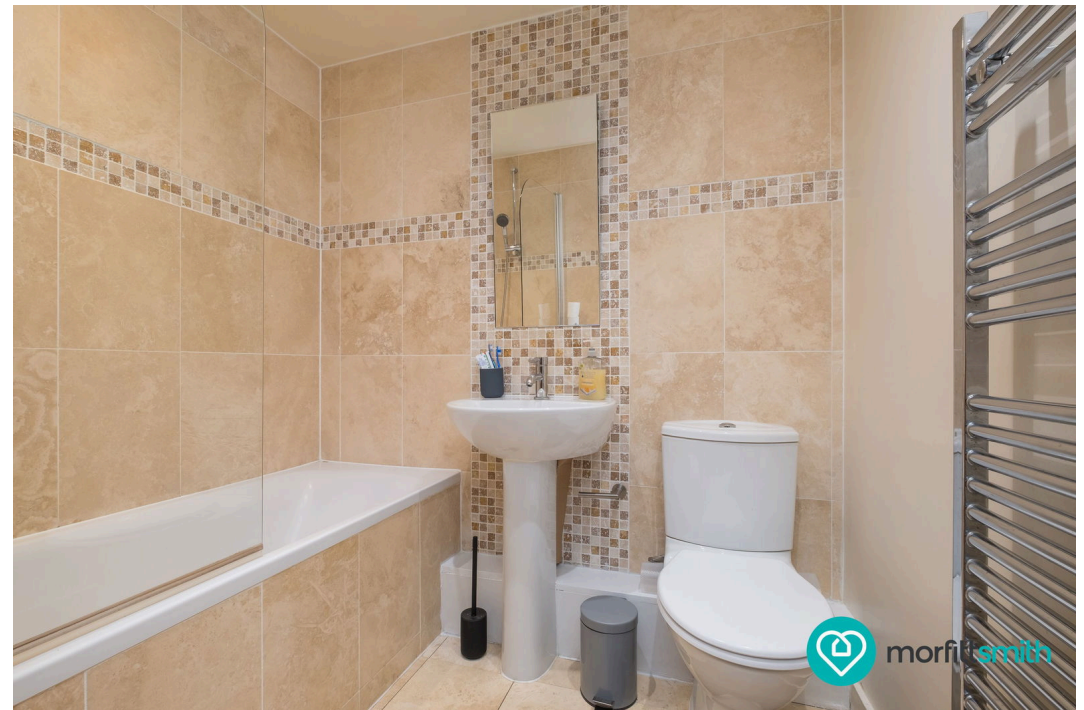
Offers Over £145,000

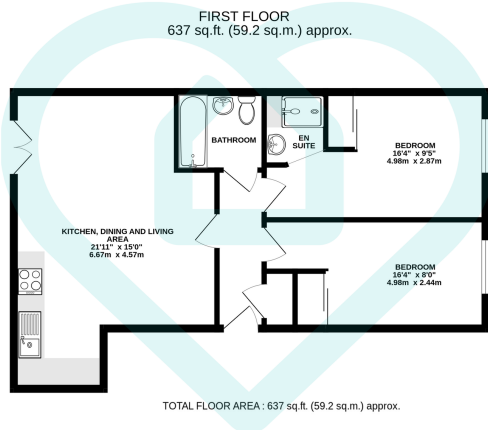
🛏 2 🍳 2 🛋 1



### Why You'll Love It:

Tucked away in the historic Middlewood Lodge, this beautifully finished two-bedroom apartment delivers a rare opportunity to enjoy peaceful surroundings without compromising on modern lifestyle needs. Combining period charm with stylish interiors. Step inside and you're welcomed into a wide entrance hallway with built-in storage, offering a warm and practical first impression. The heart of the home is the open-plan kitchen, dining, and living space – an ideal setting for both relaxing evenings and entertaining guests. Contemporary cabinetry and sleek countertops frame the integrated appliances - dishwasher, fridge freezer, oven, electric hob, allowing you to cook and socialise with ease. Large windows ensure this inviting space is flooded with natural light throughout the day. Both bedrooms are comfortable doubles, each positioned to offer privacy and peace with built in wardrobes with mirror. The principal bedroom enjoys its own en suite shower, smartly finished with modern tiling and fittings. The second double bedroom is equally versatile – perfect as a guest room, home office, or stylish retreat. A pristine family bathroom, complete with a shower over bath, basin, and WC, rounds out the accommodation. Storage is found throughout the property one of which has plumbing for a washing machine. The apartment also benefits from a secure intercom entry system, gas central heating, and a designated parking space. The surrounding grounds are immaculate, adding to the sense of exclusivity and calm that defines life at Middlewood Lodge.

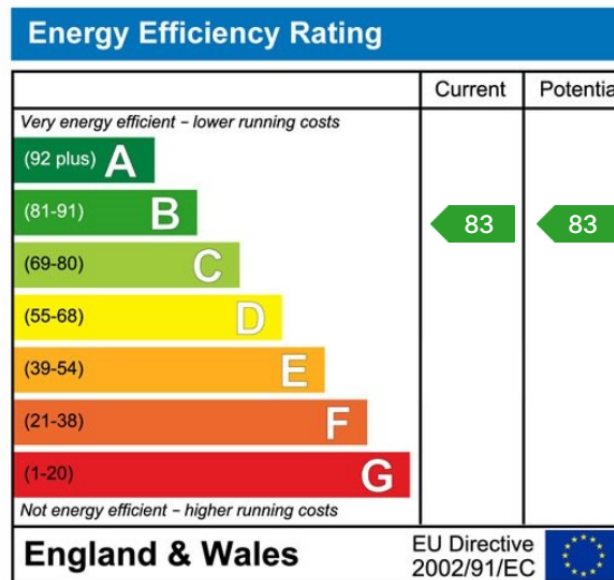
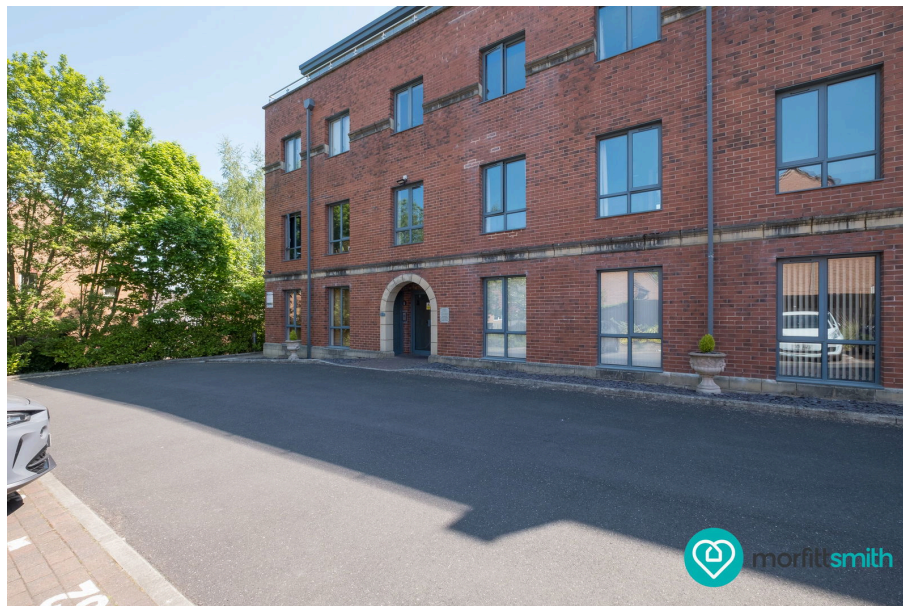




This floor plan is for illustrative purposes only. All measurements and layouts are approximations and do not necessarily capture the precise specifications of the property. No responsibility is taken for any error, omission, or misstatement. We always recommend viewing in person to confirm the exact floor plan of a property. Made with Metropix.



- Two Double Bedrooms
- Open Plan Living
- Well Presented Throughout
- Close To Local Transport Links
- Juliet Balcony
- Great For First Time Buyers, Downsizers and Investors
- Designated Parking Space
- Popular Wadsley Park Village Location
- Surrounded By Green Space
- Secure Complex



## Sales | Lettings | New Homes

VAT Reg Number: 191 3588 84  
Company Reg Number: 08610489  
Company Reg Address: 67 Middlewood Road, Hillsborough, Sheffield, S6 4GX.

The MorfittSmith Building  
67 Middlewood Road  
Hillsborough  
Sheffield  
S6 4GX

## Get in touch - arrange an appointment



0114 232 1764



sales@morfittsmith.co.uk  
lettings@morfittsmith.co.uk  
newhomes@morfittsmith.co.uk



www.morfittsmith.co.uk



@MorfittSmith



@MorfittSmith



MorfittSmith  
Estate & Letting Agent