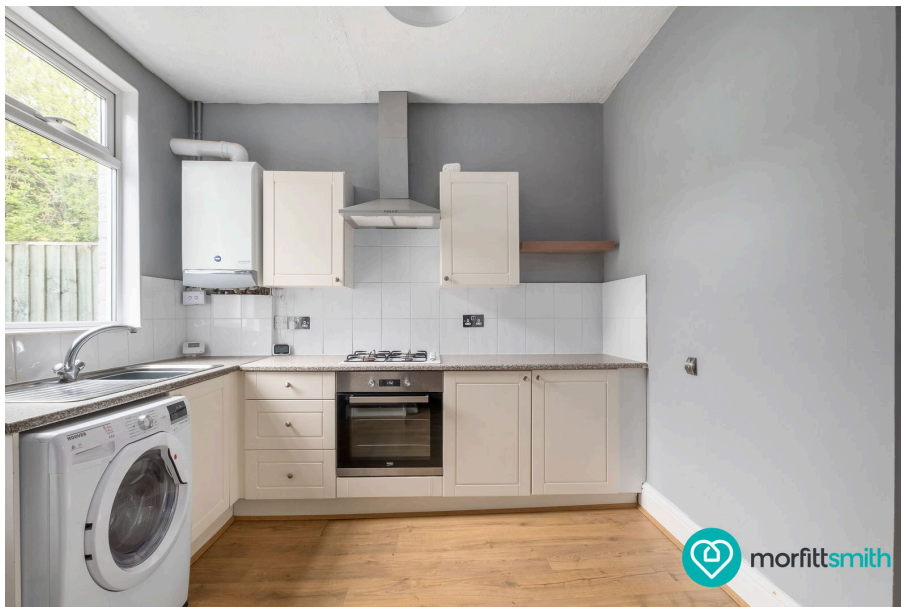




Kipling Road, Sheffield, S6 2LG

Offers In Region Of £160,000

🛏 2 🍳 1 🛋 1



A Characterful Mid-Terrace with Garden Charm – Chain-Free & Ready to Go

Tucked away on a quiet residential street in the heart of Hillsborough, this charming two-bedroom mid-terrace offers the perfect balance of modern convenience and classic Sheffield character. With a lovely rear garden, on-road parking, and no onward chain, Kipling Road is ideal for first-time buyers, downsizers, or savvy investors.

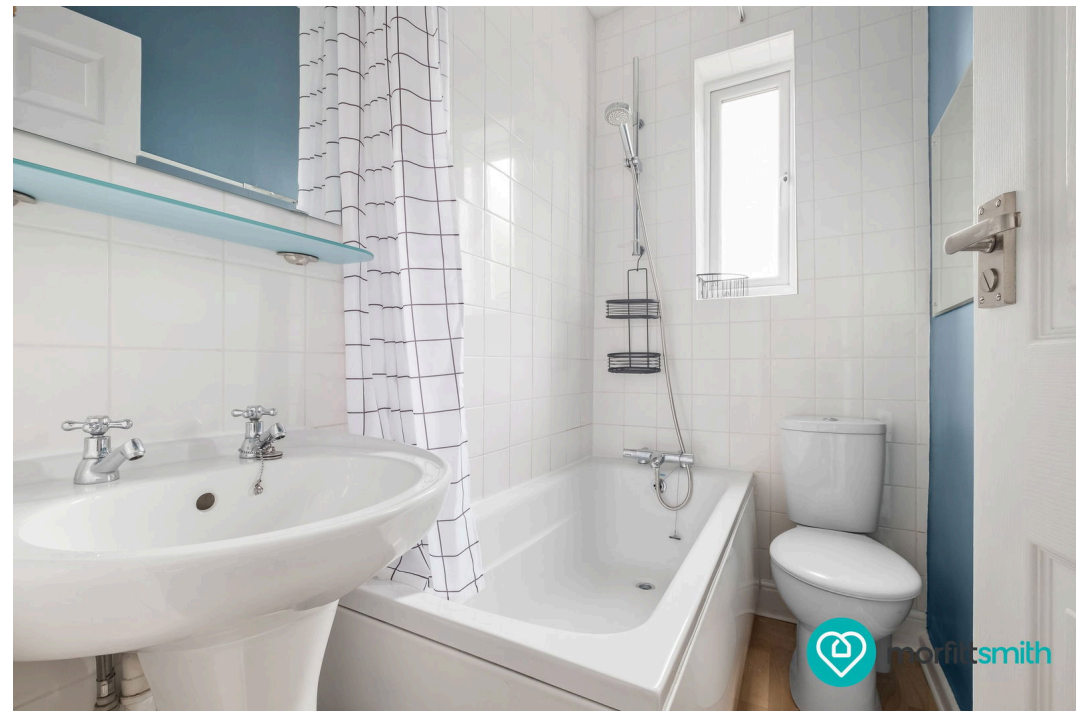
Step inside into a cosy, well-proportioned living room—a welcoming space that’s bathed in natural light thanks to its generous front window. Beyond, you’ll find a spacious kitchen/diner with plenty of room to cook, eat, and entertain. It’s a bright and functional hub of the home, offering garden views and access to the rear outdoor space, perfect for summer evenings or weekend pottering.

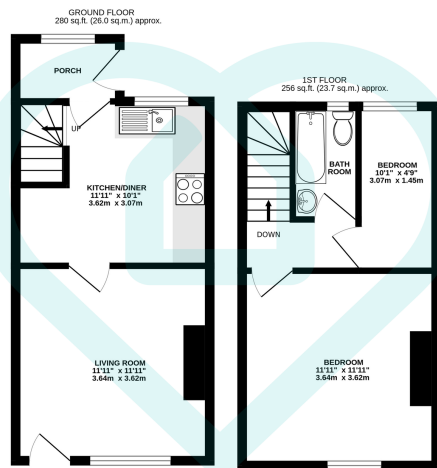
Upstairs, the home offers two bedrooms: a superb double to the front that spans the width of the home, and a smaller room to the rear—ideal as a guest room, home office, or nursery. The modern bathroom sits comfortably between both bedrooms and features a clean, neutral suite with shower over bath.

Outside, the rear garden is a pleasant surprise—low-maintenance, with space for seating or planting, and just the right size to enjoy without too much upkeep. Parking is conveniently available on-street, and the area is well-connected with excellent public transport links, shops, cafes, and green spaces all within easy reach.

This is a lovely home in a thriving community, and with no chain, it’s ready when you are.

Don’t miss your chance—contact MorfittSmith today to book your viewing.



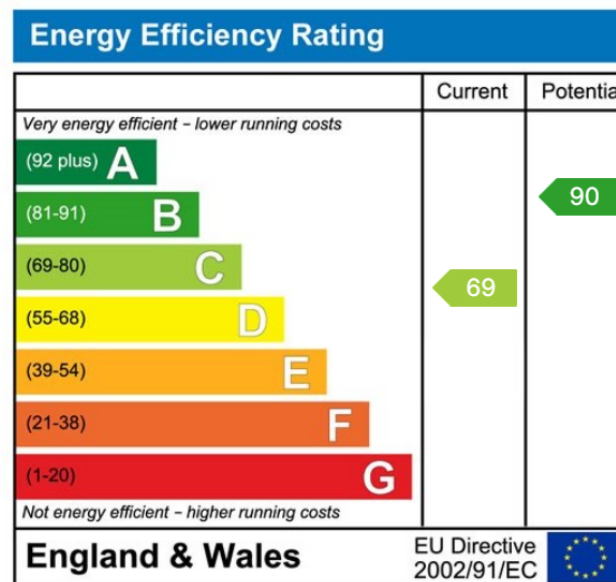


TOTAL FLOOR AREA : 536 sq.ft. (49.8 sq.m.) approx.

This floor plan is for illustrative purposes only. All measurements and layouts are approximations and do not necessarily capture the precise specifications of the property. No responsibility is taken for any error, omission, or misstatement. We always recommend viewing in person to confirm the exact floor plan of a property. Made with Metropix.



- Offered chain-free for a straightforward purchase
- Spacious living room with excellent natural light
- Generous double bedroom and versatile second bedroom
- Private rear garden, ideal for relaxing or entertaining
- Located in the heart of Hillsborough
- Charming two-bedroom mid-terrace home
- Well-proportioned kitchen/diner with garden access
- Contemporary bathroom with shower over bath
- On-road parking available
- Excellent access to all local amenities and public transport



Sales | Lettings | New Homes

VAT Reg Number: 191 3588 84
Company Reg Number: 08610489
Company Reg Address: 67 Middlewood Road, Hillsborough, Sheffield, S6 4GX.

The MorfittSmith Building
67 Middlewood Road
Hillsborough
Sheffield
S6 4GX

Get in touch - arrange an appointment



0114 232 1764



sales@morfittsmith.co.uk
lettings@morfittsmith.co.uk
newhomes@morfittsmith.co.uk



www.morfittsmith.co.uk



@MorfittSmith



@MorfittSmith



MorfittSmith
Estate & Letting Agent