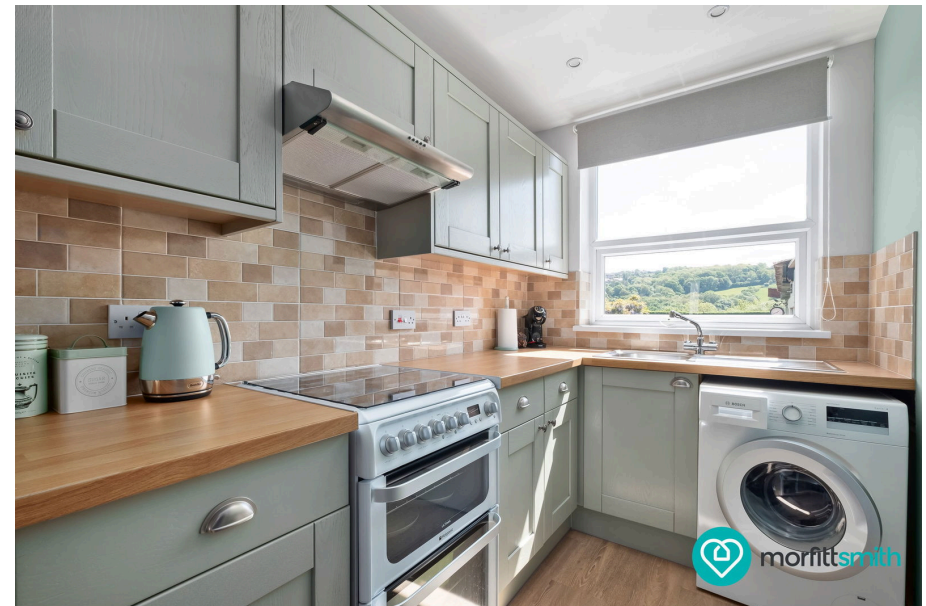
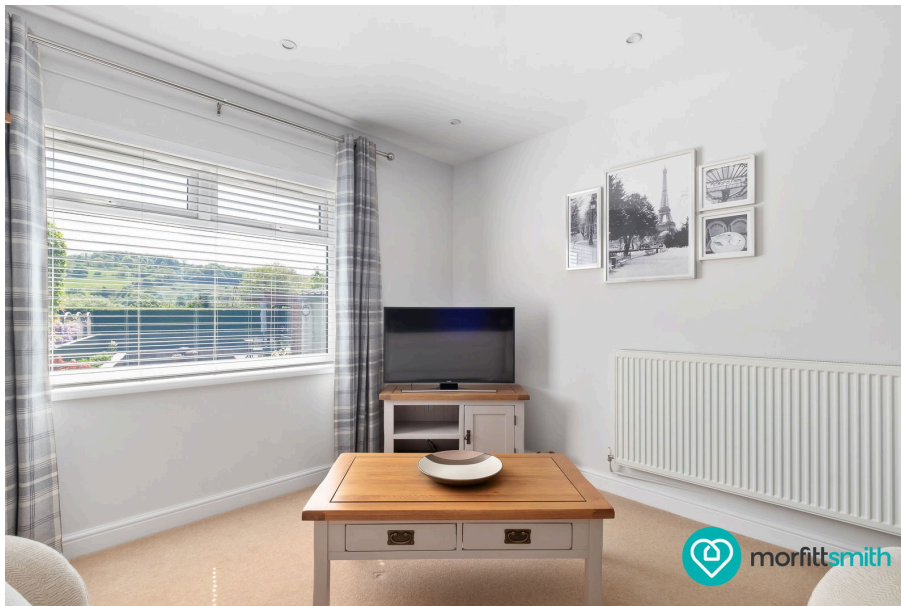




Stannington Road, Stannington , Sheffield, S6 5FX

£325,000

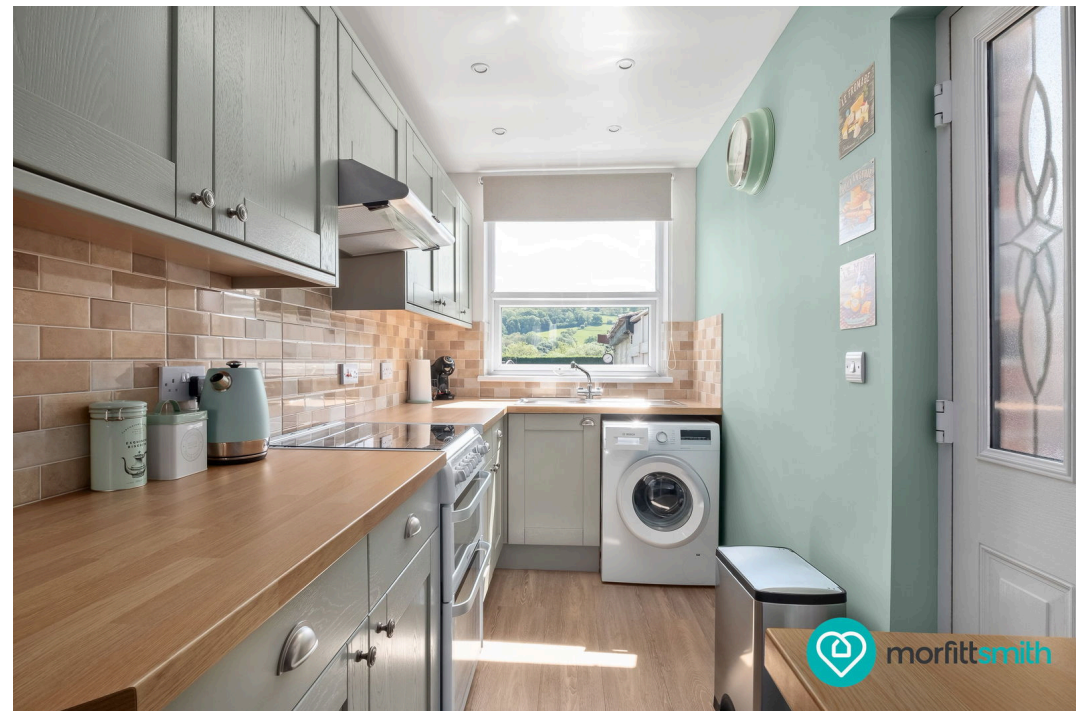
🛏 2 🍳 1 🛋 2

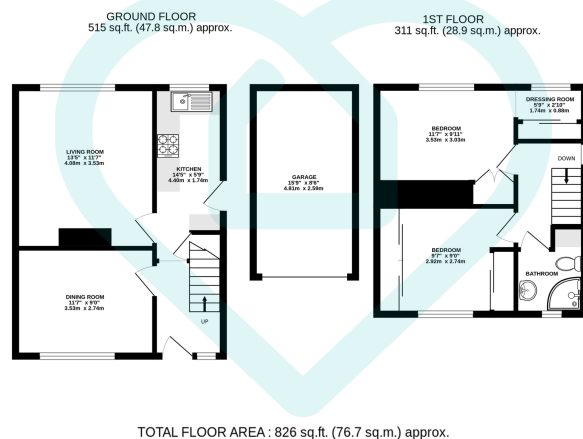


Why You'll Love It:

Stannington Road welcomes you home with the rare presence of space and seclusion. The generous frontage provides parking for several vehicles, ideal for households with multiple cars or for visiting family and friends. A detached garage sits smartly to the right of the home, offering secure parking or an ideal workshop or storage space. Step through the front door and you are greeted by a central hallway that sets a tone of warmth and flow throughout the home. To your immediate left is a charming dining room—an inviting space perfect for hosting dinners, working from home, or transforming into a cosy snug. With its front-facing window, it captures plenty of natural light and provides a peaceful retreat from the day-to-day.

Continue along the hallway and you'll find two doors at the far end: one leading left into the spacious living room and the other straight ahead into the kitchen. Both of these well-proportioned rooms overlook the garden, inviting the outside in and giving the property a sense of calm and connection to nature. The living room is a delightfully bright space, with generous dimensions that comfortably accommodate a range of furniture. It's easy to imagine curling up here in front of the TV or unwinding with a good book while gazing out over the garden. The kitchen next door is a beautiful well functioning space with a practical layout and ample cabinetry. There's direct access to the garden, making it ideal for those who love entertaining or enjoy a bit of indoor-outdoor living in the summer months. Upstairs, the home continues to impress. Both bedrooms are true doubles, providing plenty of space for relaxation and rest. The front-facing bedroom is large and bright, while the rear bedroom enjoys picturesque views over the valley and features an enviable walk-in wardrobe—perfect for fashion lovers or those looking for built-in storage without sacrificing style. There's something special about waking up to those serene views each morning, a daily reminder of just how lucky this location is. The family bathroom has been tastefully renovated in recent months, boasting a fresh, modern design and a stylish shower suite that adds both comfort and convenience to daily routines. Finished in calming tones with contemporary fittings, it's a practical and attractive space ready for immediate use.

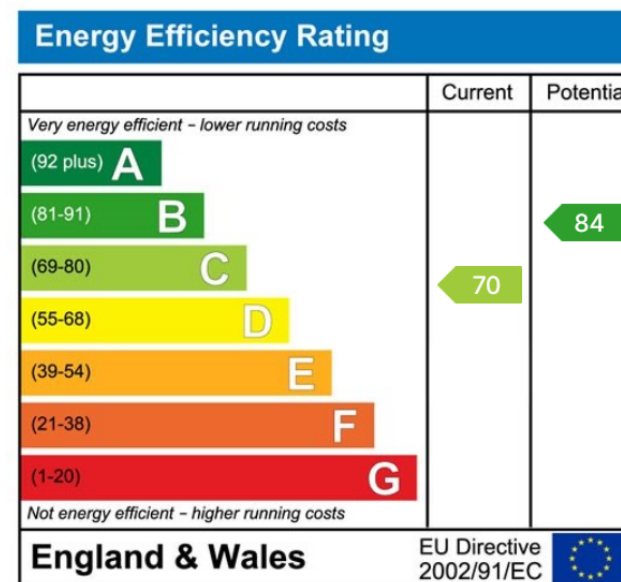




This floor plan is for illustrative purposes only. All measurements and layouts are approximations and do not necessarily capture the precise specifications of the property. No responsibility is taken for any error, omission, or misstatement. We always recommend viewing in person to confirm the exact floor plan of a property. Made with Metropix.



- Detached Home
- Valley Views
- Ample Of Off Road Parking and Garage
- Two Double Bedroom
- Recently Updated Features
- Beautiful Garden
- Popular Stannington Location
- Close To Green Space
- Great Local Amenities
- Local Transport Links



Sales | Lettings | New Homes

VAT Reg Number: 191 3588 84
Company Reg Number: 08610489
Company Reg Address: 67 Middlewood Road, Hillsborough, Sheffield, S6 4GX.

The MorfittSmith Building
67 Middlewood Road
Hillsborough
Sheffield
S6 4GX

Get in touch - arrange an appointment



0114 232 1764



sales@morfittsmith.co.uk
lettings@morfittsmith.co.uk
newhomes@morfittsmith.co.uk



www.morfittsmith.co.uk



@MorfittSmith



@MorfittSmith



MorfittSmith
Estate & Letting Agent