



Kingswood Hall, Kingswood, Sheffield, S6 1RF

Offers Over £190,000

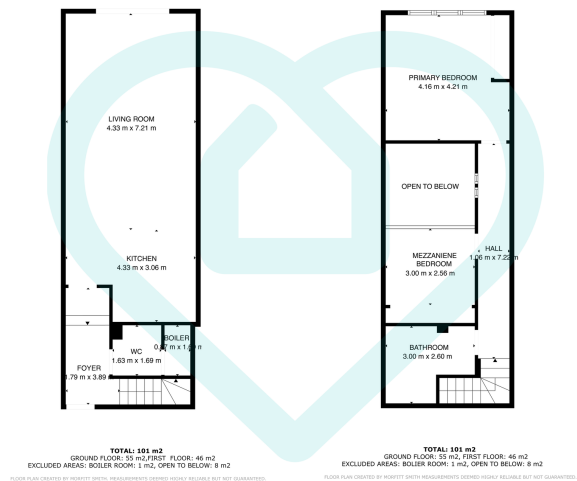
🛏 2 🚿 2 🛋 1



Why You'll Love It

Step through the secure entrance and into the elegant grounds of Kingswood Hall – a converted Victorian institution steeped in history and charm. Behind its imposing stone façade lies this delightful two-bedroom duplex apartment: a ground-floor gem that opens into bright, open-plan living, dining, and kitchen space, flowing seamlessly out to your own private patio surrounded by verdant lawns and mature trees. From the moment you enter, the home welcomes you with style and practicality in equal measure. The open-plan ground floor is perfectly designed for modern living: whether you're enjoying a quiet morning coffee, entertaining guests, or simply relaxing at the end of the day, the airy layout makes it all feel effortless. Large windows bring in gentle natural light, while the neutral décor allows your personal style to shine through. The contemporary kitchen features integrated appliances, sleek cabinetry, and generous counter space – ideal for everyday meals or more adventurous culinary exploits. Tucked discreetly is a convenient downstairs W.C., enhancing the practicality of the space for both residents and guests. Step outside from the living area and you'll find one of the home's standout features: a charming private patio perfect for al fresco dining or relaxing with a good book on warm afternoons. Surrounded by the manicured communal grounds of Kingswood Hall, it's a peaceful retreat just minutes from city life. Upstairs, the apartment continues to impress with a thoughtfully designed corridor connecting the two bedrooms and the main bathroom. The larger of the two bedrooms lies at the end of the hall, a generous double with a calming view out to the surrounding trees. The setting here is truly special – waking up to the soft rustling of leaves and a landscape of green feels more like a countryside escape than a Sheffield suburb. The second bedroom sits on the mezzanine level and makes excellent use of space. Whether you need a guest room, home office, or creative studio, this versatile area provides flexibility to suit your lifestyle. Completing the upper level is the stylish family bathroom, featuring a spacious walk-in shower, crisp tiling, and quality fixtures – designed with both comfort and aesthetics in mind. Storage has been cleverly incorporated throughout the property, with multiple built-in cupboards and clever use of space to ensure everything has its place. The apartment also comes with allocated parking!

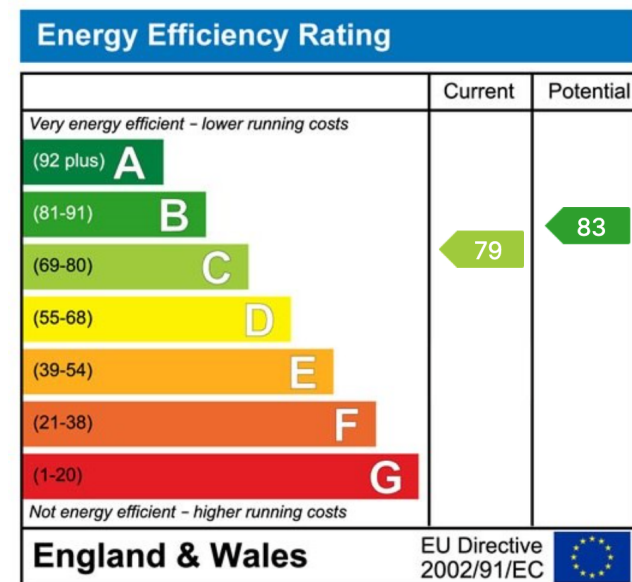




This floor plan is for illustrative purposes only. All measurements and layouts are approximations and do not necessarily capture the precise specifications of the property. No responsibility is taken for any error, omission, or misstatement. We always recommend viewing in person to confirm the exact floor plan of a property. Made with Metropix.



- Duplex Ground Floor Apartment
- Private Outside Patio
- Natural Light
- Great Transport Links
- Allocated Parking
- Two Good Sized Bedrooms
- Open Plan Living
- Grade II Listed Building
- Popular Wadsley Park Village Location
- Surrounded By Green Space



Sales | Lettings | New Homes

VAT Reg Number: 191 3588 84
Company Reg Number: 08610489
Company Reg Address: 67 Middlewood Road, Hillsborough, Sheffield, S6 4GX.

The MorfittSmith Building
67 Middlewood Road
Hillsborough
Sheffield
S6 4GX

Get in touch - arrange an appointment



0114 232 1764



sales@morfittsmith.co.uk
lettings@morfittsmith.co.uk
newhomes@morfittsmith.co.uk



www.morfittsmith.co.uk



@MorfittSmith



@MorfittSmith



MorfittSmith
Estate & Letting Agent