



Warner Road, Hillsborough, S6 4FU

Guide Price £230,000

3 1 2



GUIDE PRICE £230,000 to £240,000

A beautifully refurbished three-bedroom terrace in the heart of Hillsborough – chain free and ready to move straight into.

A stylish and fully modernised three-storey home on a quiet residential street in Hillsborough. Blending timeless character with a high-quality finish throughout, this versatile property offers bright, spacious rooms and thoughtful upgrades across every level.

Why You'll Love It:

Ground Floor

Step inside to a welcoming bay-fronted living room with fresh, neutral décor and soft new flooring underfoot. The separate dining room offers an excellent entertaining space, flowing through to a fully renovated galley kitchen at the rear. The kitchen has been thoughtfully designed with sleek units, contemporary worktops, and integrated appliances for modern-day living.

First Floor

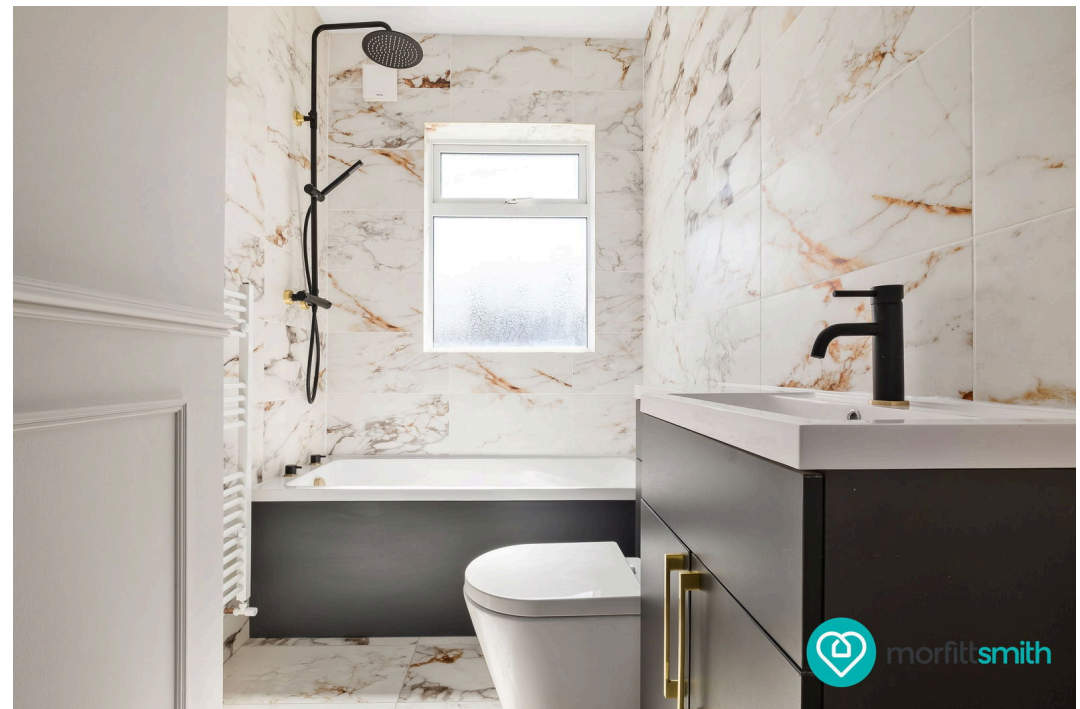
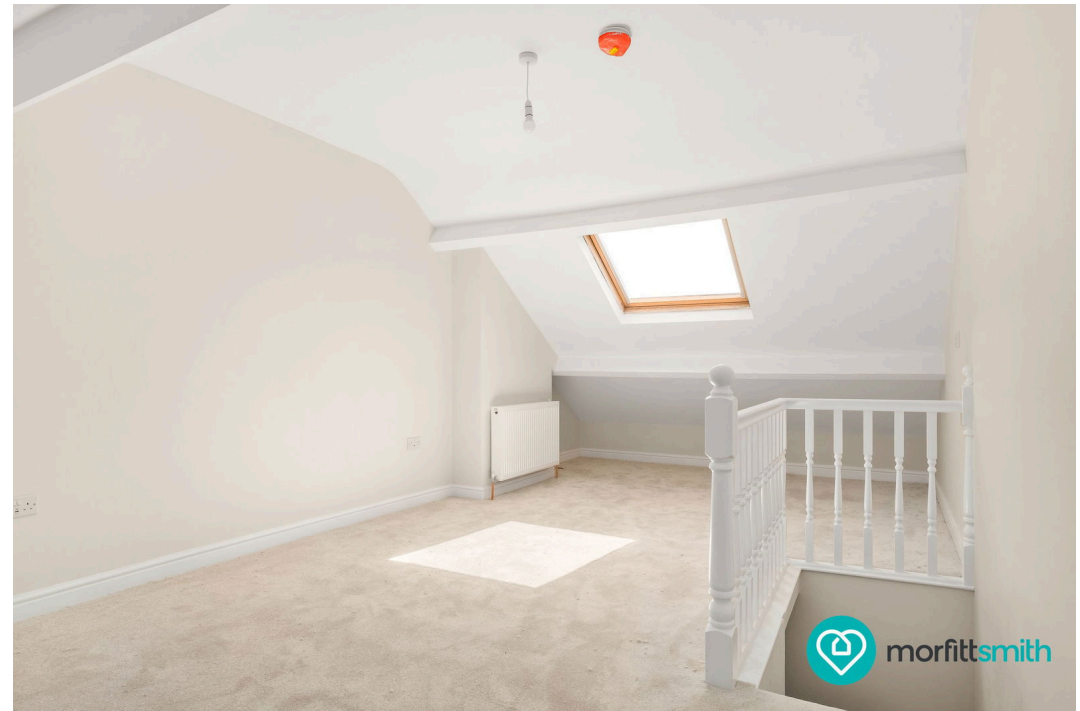
Upstairs, you'll find two well-proportioned bedrooms—one a generous double and the other perfect as a guest room, nursery, or home office. A newly fitted bathroom sits alongside, finished with contemporary tiling and stylish fittings.

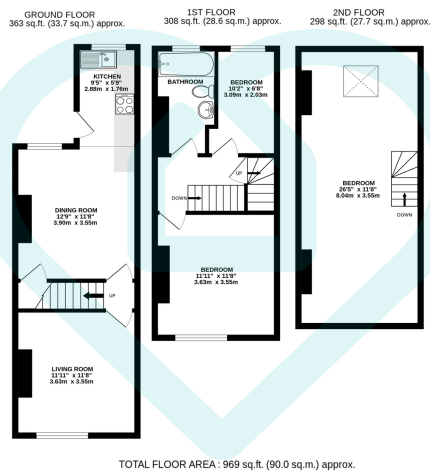
Second Floor

The top floor is home to a spacious third bedroom, offering a flexible living space ideal as a principal suite, creative workspace, or quiet retreat.

The Location:

Set in the ever-popular suburb of Hillsborough, this home enjoys easy access to local amenities, including parks, independent shops, and cafés. With excellent public transport links—including the Supertram—and convenient routes into the city centre, it's a fantastic spot for commuters and families alike.

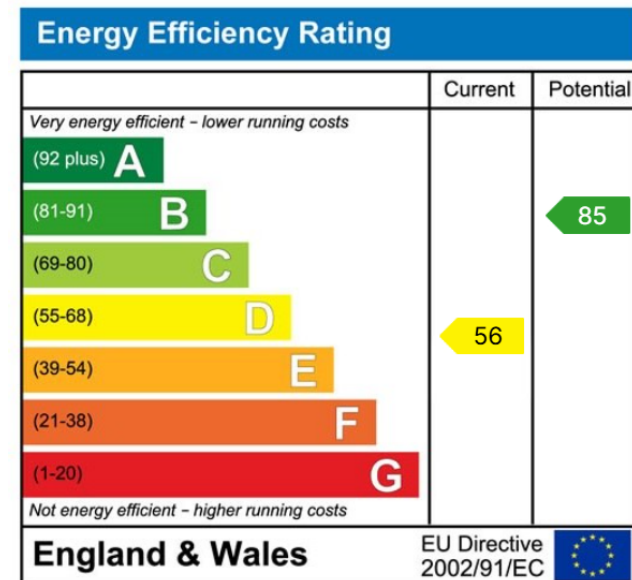




This floor plan is for illustrative purposes only. All measurements and layouts are approximations and do not necessarily capture the precise specifications of the property. No responsibility is taken for any error, omission, or misstatement. We always recommend viewing in person to confirm the exact floor plan of a property. Made with Metropix.



- Guide Price of £230,000 to £240,000
- Chain Free
- Newly Refurbished
- Spacious Bay-Fronted Living Room
- Separate Dining Room
- Stylish New Off-Shot Kitchen
- New Three Piece Bathroom Suite
- Three Well-Proportioned Bedrooms
- Excellent Transport Links
- Close To Hillsborough Park



Sales | Lettings | New Homes

VAT Reg Number: 191 3588 84
 Company Reg Number: 08610489
 Company Reg Address: 67 Middlewood Road, Hillsborough, Sheffield, S6 4GX.

The MorfittSmith Building
 67 Middlewood Road
 Hillsborough
 Sheffield
 S6 4GX

Get in touch - arrange an appointment



0114 232 1764



sales@morfittsmith.co.uk
 lettings@morfittsmith.co.uk
 newhomes@morfittsmith.co.uk



www.morfittsmith.co.uk



@MorfittSmith



@MorfittSmith



MorfittSmith
 Estate & Letting Agent