



Parkside Road, Hillsborough, S6 2AA

Offers Over £200,000

3 1 1



Why We Love It

The Location Is Perfect For Enjoying Everything Hillsborough Has To Offer!

Parkside Road is perfectly positioned for all the local amenities Hillsborough has to offer. You'll find yourself just a short stroll away from Hillsborough Park, ideal for weekend walks or summer picnics. The local high street is packed with independent cafes, shops, and eateries, making it easy to enjoy a variety of activities. Plus, with excellent transport links including nearby tram and bus routes, the whole of Sheffield is at your fingertips.

Why You'll Love It

Step inside, and you'll immediately feel the warm, homely atmosphere this charming property offers. The lounge is a cosy retreat, perfectly suited for relaxed evenings with loved ones. The heart of the home, however, is the delightful kitchen diner. With its homely feel, generous cabinetry, and dining area, this space is ideal for family meals or hosting friends.

The first floor is home to two spacious bedrooms, both offering plenty of room for your furnishings or providing flexible living for many families whether it is a home office or guest room. The family bathroom, with its three-piece suite, adds a touch of charm to the property. On the second floor, the loft bedroom is a stunning space that benefits from generous storage, making it an ideal sanctuary for unwinding.

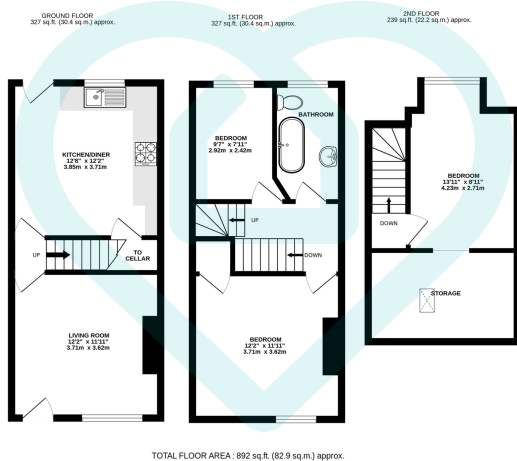
To the rear, the enclosed garden offers a peaceful retreat with a patio area, perfect for enjoying morning coffee or hosting a summer barbecue. It's a home full of character and warmth, ready for you to make your own.



we are  morfittsmith



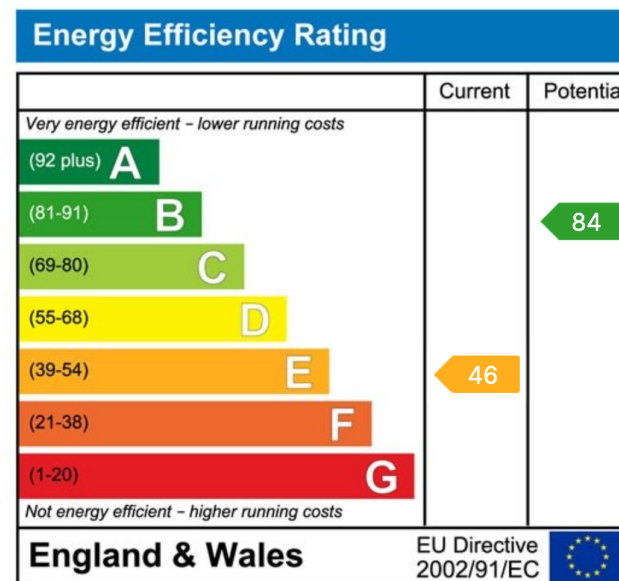
we are  morfittsmith



This floor plan is for illustrative purposes only. All measurements and layouts are approximations and do not necessarily capture the precise specifications of the property. No responsibility is taken for any error, omission, or misstatement. We always recommend viewing in person to confirm the exact floor plan of a property. Made with Metropix.



- Attractive Stone-Fronted Mid-Terrace Property
- Homely Kitchen Diner
- Loft Bedroom With Generous Storage Space
- Convenient Location Close To Hillsborough's Amenities
- A Welcoming Community Location
- Spacious Lounge With Cosy Atmosphere
- Well-Appointed Three-Piece Family Bathroom Suite
- Beautifully Decorated Throughout With Neutral Tones
- Excellent Transport Links Including Nearby Tram And Bus Routes
- Perfect Blend Of Traditional Charm And Modern Comfort



Sales | Lettings | New Homes

VAT Reg Number: 191 3588 84
 Company Reg Number: 08610489
 Company Reg Address: 67 Middlewood Road, Hillsborough, Sheffield, S6 4GX.

The MorfittSmith Building
 67 Middlewood Road
 Hillsborough
 Sheffield
 S6 4GX

Get in touch - arrange an appointment



0114 232 1764



sales@morfittsmith.co.uk
 lettings@morfittsmith.co.uk
 newhomes@morfittsmith.co.uk



www.morfittsmith.co.uk



@MorfittSmith



@MorfittSmith



MorfittSmith
 Estate & Letting Agent