

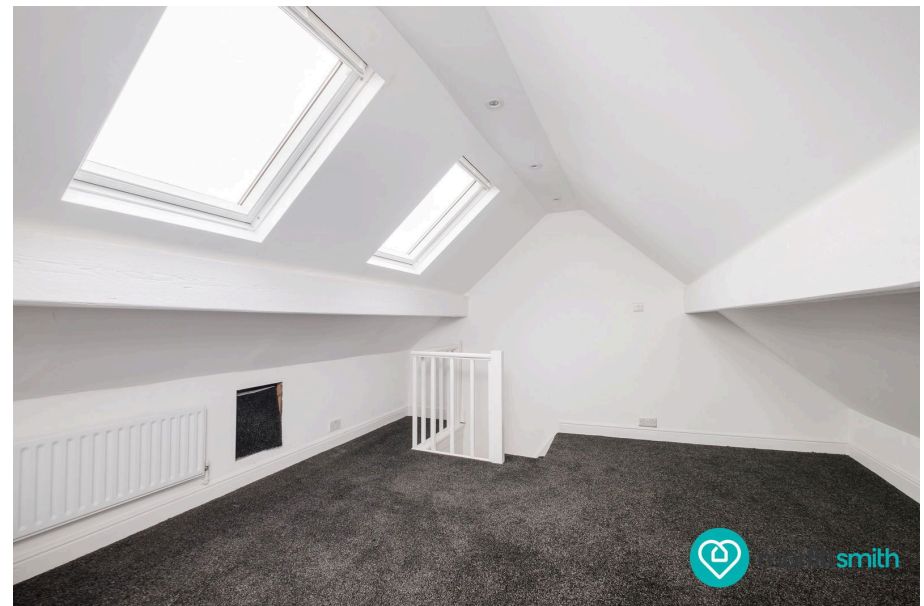
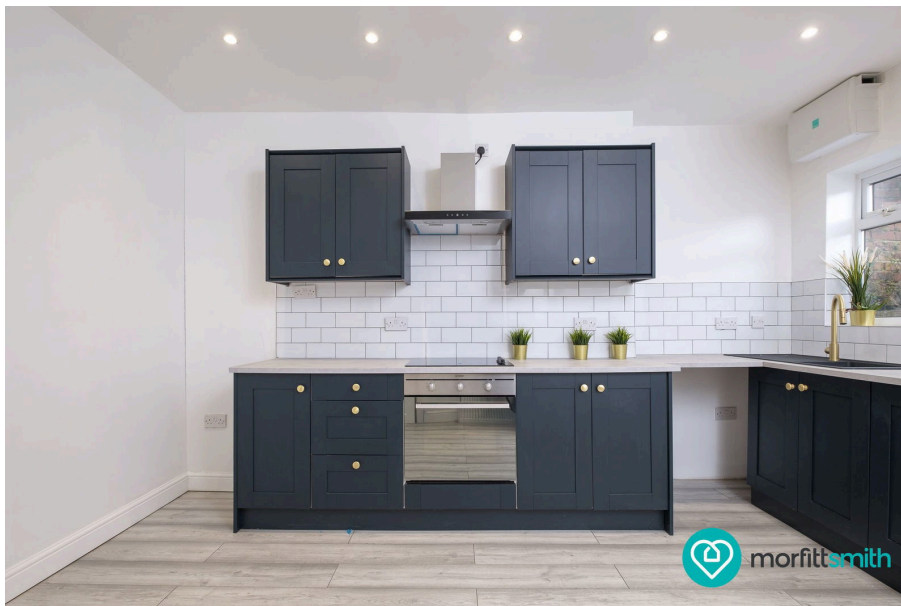




# Beechwood Road, Hillsborough, Sheffield, S6 4LQ

Offers Over £175,000

🛏 2 🍳 1 🛋 2



## Why We Love Beechwood Road

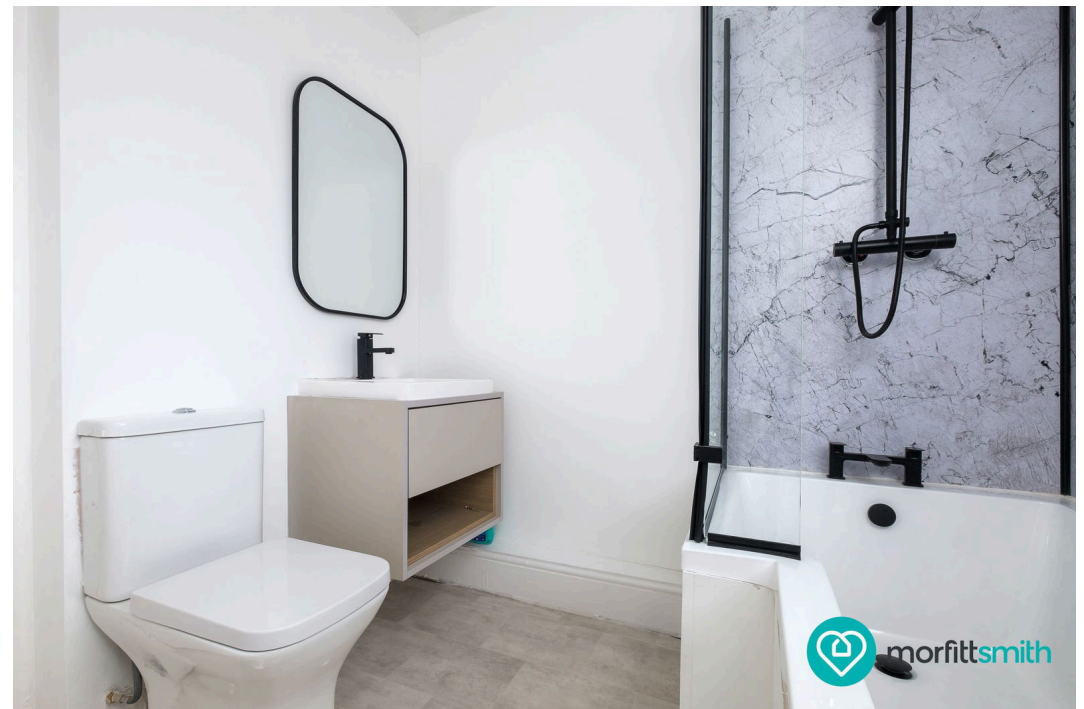
Nestled in the heart of Hillsborough, this home enjoys a superb location with excellent amenities on its doorstep. Just a short walk from Hillsborough Park, local cafés, independent shops, and major supermarkets, you'll never be far from the essentials.

The area boasts fantastic transport links, including the Supertram and major bus routes, providing seamless access to Sheffield city centre and beyond. For nature lovers, the picturesque Rivelin Valley is nearby, offering beautiful walking trails and green spaces. With a welcoming community and a wealth of conveniences, Beechwood Road is a highly sought-after spot in Sheffield.

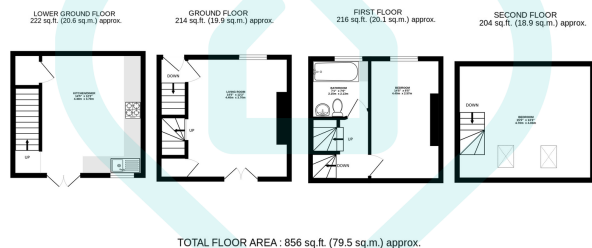
## Why You'll Love Beechwood Road

This stunning end-terrace home on Beechwood Road is beautifully presented, offering a perfect blend of contemporary style and classic charm. Spanning four floors, the property boasts a sleek and modern kitchen/diner on the lower ground floor, with direct access to a private, enclosed rear garden—an ideal space for outdoor relaxation with minimal maintenance required.

The ground floor features a spacious and inviting living room, bathed in natural light, creating a warm and comfortable space to unwind. The first floor hosts a well-proportioned bedroom alongside a stylish three-piece bathroom suite, while the top floor is dedicated to a generous master bedroom with characterful features. With its attractive external appearance and practical layout, this home is a fantastic opportunity for first-time buyers, professionals, or small families looking for a home ready to move into.



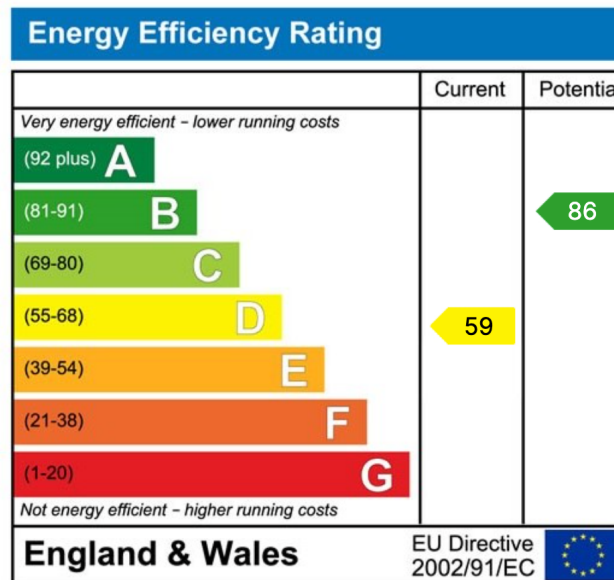




This floor plan is for illustrative purposes only. All measurements and layouts are approximations and do not necessarily capture the precise specifications of the property. No responsibility is taken for any error, omission, or misstatement. We always recommend viewing in person to confirm the exact floor plan of a property. Made with Metropix.



- Stylish End-Terrace Home in the heart of Hillsborough
- Sleek and Contemporary Kitchen/Diner with garden access
- Two Generous Bedrooms across the first and second floors
- Enclosed Rear Garden that's easy to maintain
- Fantastic Transport Links including Supertram and bus routes
- Beautifully Presented Throughout with modern décor
- Spacious and Inviting Lounge filled with natural light
- Modern Three-Piece Bathroom Suite on the first floor
- Attractive External Appearance with classic charm
- Close to Local Parks, Shops, and Cafés for everyday convenience



## Sales | Lettings | New Homes

VAT Reg Number: 191 3588 84  
Company Reg Number: 08610489  
Company Reg Address: 67 Middlewood Road, Hillsborough, Sheffield, S6 4GX.

The MorfittSmith Building  
67 Middlewood Road  
Hillsborough  
Sheffield  
S6 4GX

## Get in touch - arrange an appointment



0114 232 1764



sales@morfittsmith.co.uk  
lettings@morfittsmith.co.uk  
newhomes@morfittsmith.co.uk



www.morfittsmith.co.uk



@MorfittSmith



@MorfittSmith



MorfittSmith  
Estate & Letting Agent