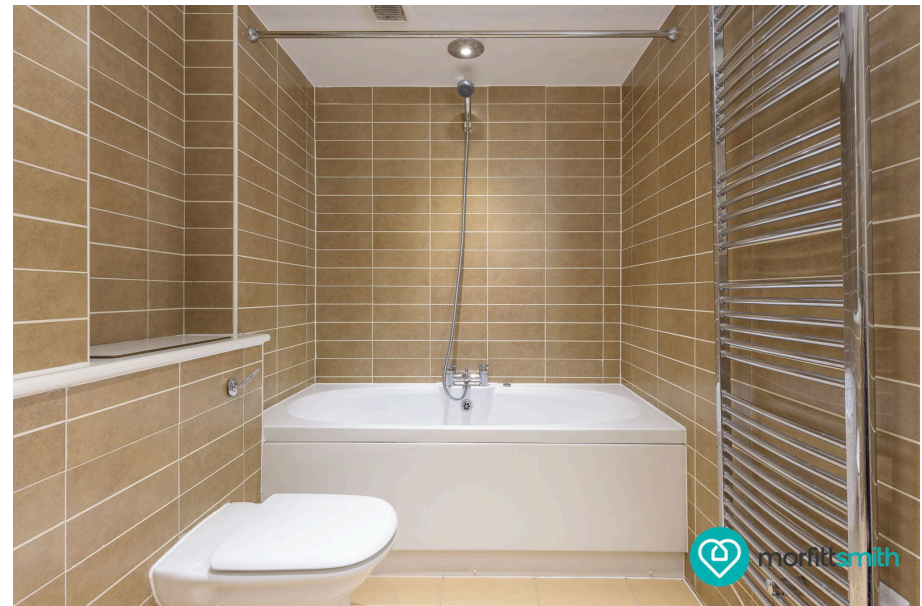
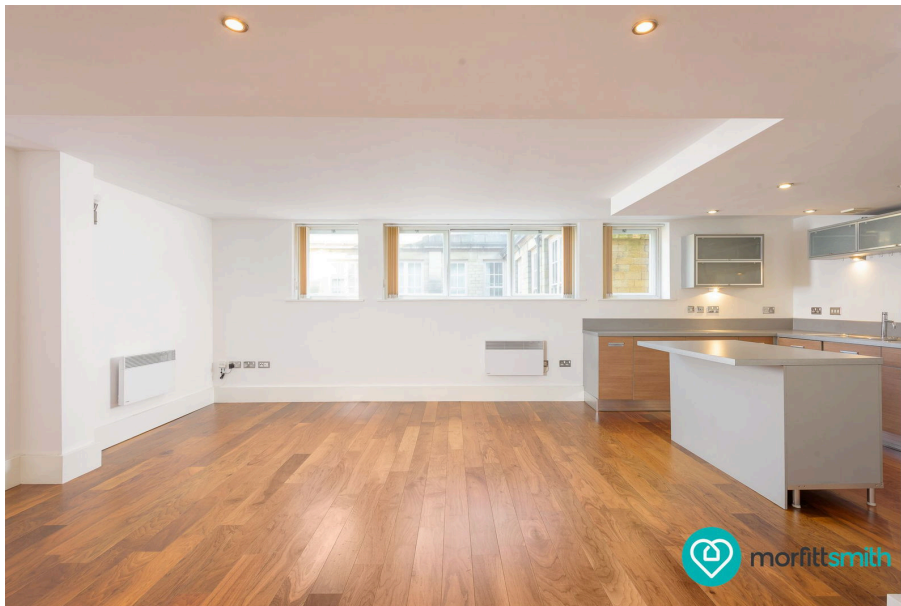
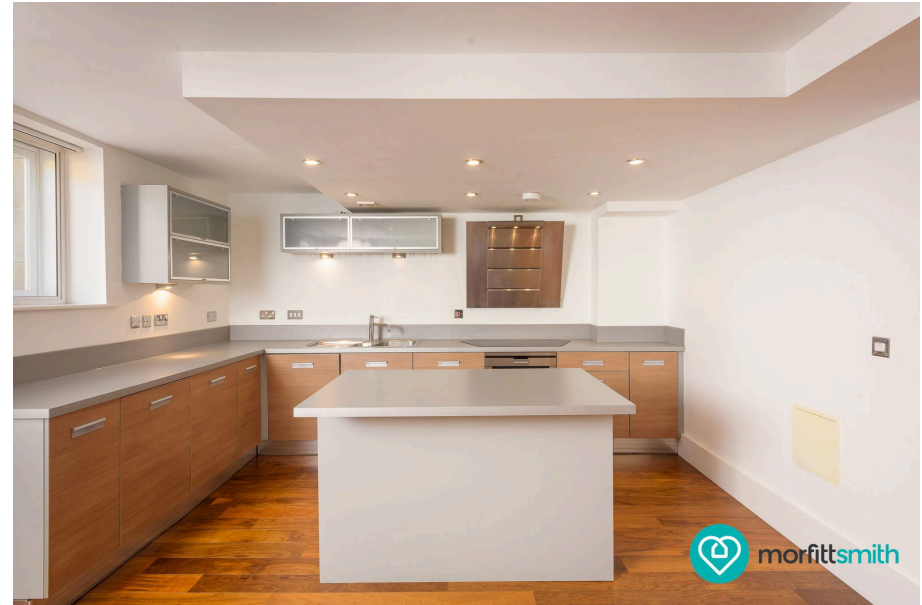




Holly House, 15, Holly Street, Off Leopold Street, Sheffield, S1 2GT

Offers Over £195,000

🛏 2 🍳 2 🛋 1



Why You'll Love It

This apartment impresses with its exceptional sense of space. The open-plan living area is expansive and bathed in natural light from the building's characteristic large windows, providing a welcoming setting for relaxation or entertaining. Both bedrooms are well-proportioned doubles, offering versatility for families, guests, or even a home office. The master bedroom benefits from an en-suite bathroom, while the second bathroom ensures convenience for residents and visitors alike. High ceilings and period features are harmoniously balanced with modern finishes, creating a timeless yet contemporary appeal. Step outside, and you'll find a charming communal courtyard—a rare feature in such a central location. This serene space provides a peaceful retreat to enjoy your morning coffee or unwind after a busy day in the city. It's the perfect spot to connect with neighbours or relax amidst the character of this historic building.

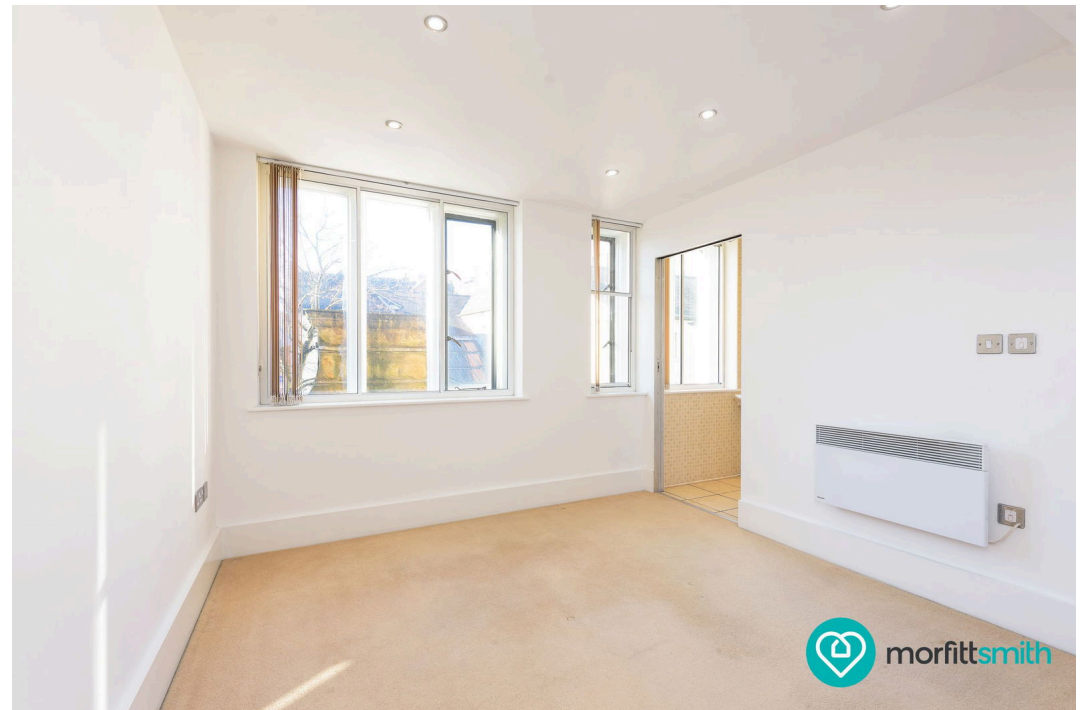
Why We Love It

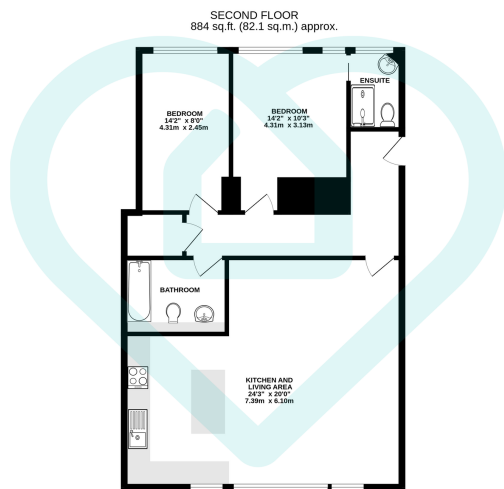
Located on Holly Street, this apartment offers the best of city living. Just a short stroll from Sheffield's theatres, shops, and vibrant dining scene, it puts the city's cultural and social highlights at your fingertips. Despite its central location, Holly House feels like a tranquil escape, with the communal courtyard and quiet interiors providing a welcome contrast to the bustling city.

Lease Term: 150 Years from 18.02.2005

Expires: 15.02.2155

Term Remaining: 130 Years

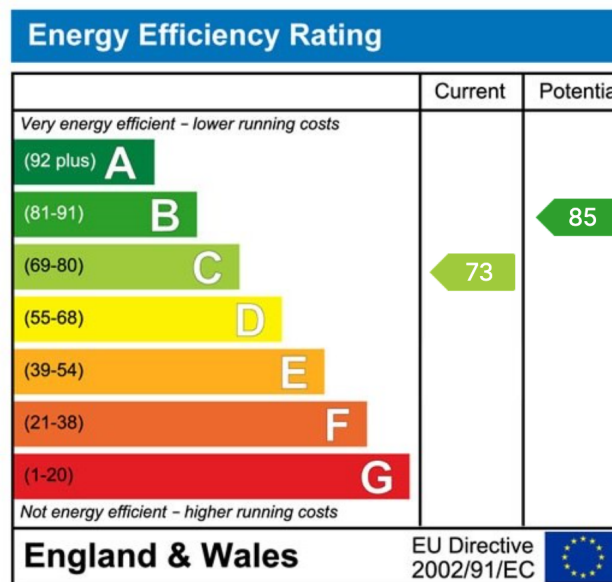




This floor plan is for illustrative purposes only. All measurements and layouts are approximations and do not necessarily capture the precise specifications of the property. No responsibility is taken for any error, omission, or misstatement. We always recommend viewing in person to confirm the exact floor plan of a property. Made with Metropix.



- Grade II Listed Building
- Great Open Living Space
- Private Courtyard For Residents
- Second Floor Apartment
- Maintained Original Features
- Two Bedrooms and Two Bathrooms
- Sheffield Central Location
- Well Maintained Throughout
- Good For Commuting
- Everything On Your Doorstep



Sales | Lettings | New Homes

VAT Reg Number: 191 3588 84
Company Reg Number: 08610489
Company Reg Address: 67 Middlewood Road, Hillsborough, Sheffield, S6 4GX.

The MorfittSmith Building
67 Middlewood Road
Hillsborough
Sheffield
S6 4GX

Get in touch - arrange an appointment



0114 232 1764



sales@morfittsmith.co.uk
lettings@morfittsmith.co.uk
newhomes@morfittsmith.co.uk



www.morfittsmith.co.uk



@MorfittSmith



@MorfittSmith



MorfittSmith
Estate & Letting Agent