



Carrfield Road, Sheffield, S8 9SD

£190,000

🛏 2 🍳 1 🛋 2



Ground Floor:

Step into the inviting entrance lobby, which leads directly into the bay-windowed lounge, a bright and welcoming space ideal for relaxation. From here, access flows into the separate dining room, perfect for entertaining or family meals. The fitted and equipped kitchen enjoys views over the garden through two large windows and provides access to the side pathway via an external door, ensuring convenience and ease.

First Floor:

The first-floor landing leads to two generously proportioned double bedrooms, both offering ample space for furniture and personal touches. Completing this level is the bathroom/w.c., designed with functionality in mind.

Exterior:

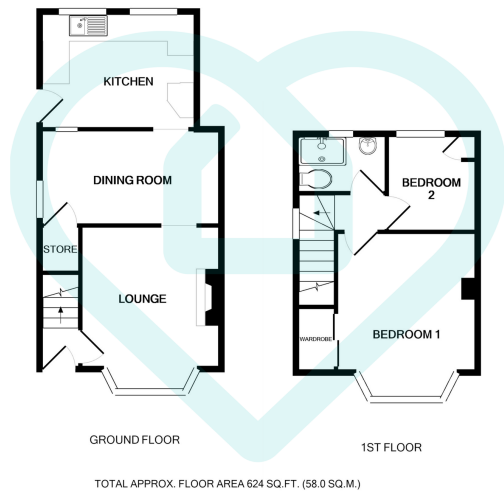
The property boasts gardens to the front and rear, providing a mix of greenery and outdoor living spaces for relaxation or play. Additionally, the home benefits from off-road parking, ensuring practicality and ease for homeowners and visitors alike.

The Location:

Nestled between the lively districts of Heeley and Meersbrook, this property is ideally located for those seeking the perfect balance of urban convenience and community charm. Heeley is known for its independent cafes, shops, and creative scene, while Meersbrook offers picturesque green spaces, including the popular Meersbrook Park, with its stunning views across the city. Both areas are well-served by reputable schools, local amenities, and excellent transport links to Sheffield city center and beyond, making them a popular choice for families and professionals alike.

This charming home combines comfortable interiors, outdoor appeal, and a prime location, making it an excellent choice for a variety of buyers. Contact us today to arrange a viewing!

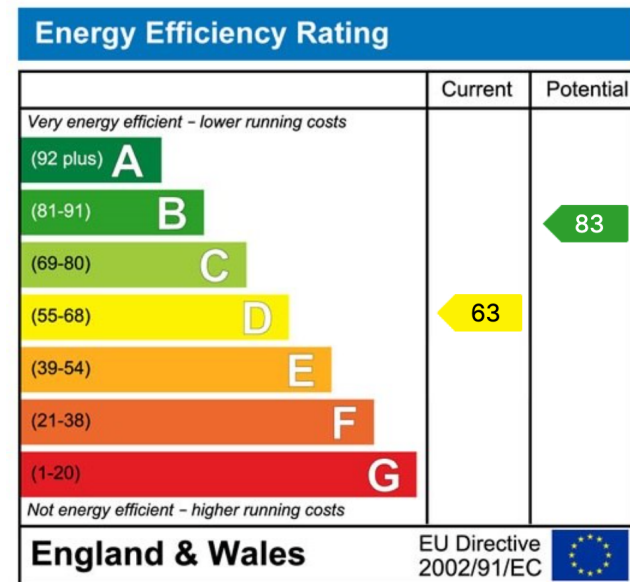




This floor plan is for illustrative purposes only. All measurements and layouts are approximations and do not necessarily capture the precise specifications of the property. No responsibility is taken for any error, omission, or misstatement. We always recommend viewing in person to confirm the exact floor plan of a property. Made with Metropix.



- Situated on the boundaries of the vibrant districts of Heeley and Meersbrook.
- Well-Equipped Kitchen: Overlooks the garden with two windows.
- Functional Bathroom: Includes a modern bathroom/w.c. on the first floor.
- Off-Road Parking: Practical parking solution for homeowners and visitors.
- Green Spaces Nearby: Enjoy the picturesque Meersbrook Park with stunning city views
- Features a bay-windowed lounge a separate dining room.
- Two Double Bedrooms: Generously proportioned spaces for comfort and versatility.
- Versatile Appeal: Gardens to the front and rear offer greenery and outdoor living spaces.
- Community Charm: Close to Heeley's independent cafes, shops, and creative scene.
- Excellent Connectivity: Convenient access to schools, amenities, and transport links to Sheffield city centre.



Sales | Lettings | New Homes

VAT Reg Number: 191 3588 84
Company Reg Number: 08610489
Company Reg Address: 67 Middlewood Road, Hillsborough, Sheffield, S6 4GX.

The MorfittSmith Building
67 Middlewood Road
Hillsborough
Sheffield
S6 4GX

Get in touch - arrange an appointment



0114 232 1764



sales@morfittsmith.co.uk
lettings@morfittsmith.co.uk
newhomes@morfittsmith.co.uk



www.morfittsmith.co.uk



@MorfittSmith



@MorfittSmith



MorfittSmith
Estate & Letting Agent