



Victoria Road, Stocksbridge, S36 2FX

Offers Over £220,000

3 1 2



Why We Love It

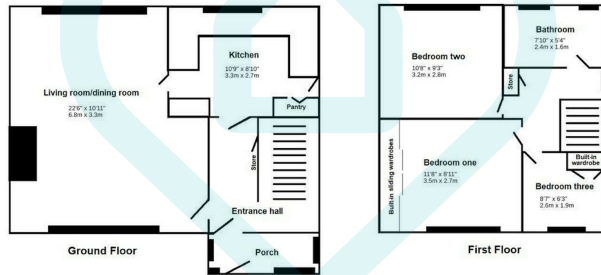
Nestled in the desirable community of Stocksbridge, Victoria Road offers both charm and convenience. With local shops, schools, and parks within easy reach, plus excellent connections to Sheffield city centre, this location is perfect for those who enjoy a balanced lifestyle close to both nature and amenities. With golfing and cricket facilities nearby.

Why You'll Love It

This thoughtfully designed home welcomes you with an inviting entrance hall that flows effortlessly into each of the downstairs living spaces. To the right, a tasteful lounge and dining room await, featuring a characterful fireplace and large windows that flood the space with natural light. The modern kitchen is a chef's delight, fitted with high-quality appliances and finishes that make cooking and entertaining a joy.

Upstairs, two spacious double bedrooms offer a peaceful retreat, complemented by a versatile single bedroom, perfect for a home office or guest room. The generous three-piece bathroom suite completes this level with both style and practicality. Outside, you'll enjoy an easy-to-maintain rear garden, ideal for relaxing or hosting, alongside the convenience of a detached garage and off-road parking.

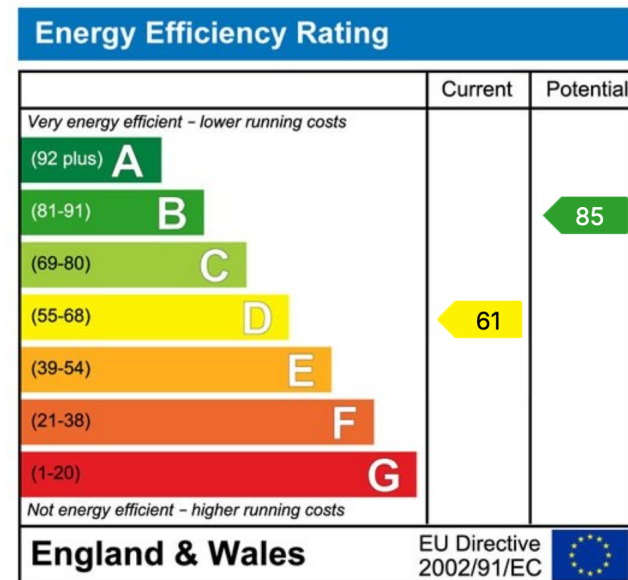




This floor plan is for illustrative purposes only. All measurements and layouts are approximations and do not necessarily capture the precise specifications of the property. No responsibility is taken for any error, omission, or misstatement. We always recommend viewing in person to confirm the exact floor plan of a property. Made with Metropix.



- Desirable Stocksbridge Location
- Bright Lounge/Dining Room with Feature Fireplace
- Generous Three-Piece Family Bathroom Suite
- Off-Road Parking for Convenience
- Ready for You to Move In and Make It Your Own
- Semi-Detached Three-Bedroom Home
- Modern Kitchen
- Detached Garage for Additional Storage
- Entertainment Near Convenience
- Surrounding Greenspace



Sales | Lettings | New Homes

VAT Reg Number: 191 3588 84
Company Reg Number: 08610489
Company Reg Address: 67 Middlewood Road, Hillsborough, Sheffield, S6 4GX.

The MorfittSmith Building
67 Middlewood Road
Hillsborough
Sheffield
S6 4GX

Get in touch - arrange an appointment



0114 232 1764



sales@morfittsmith.co.uk
lettings@morfittsmith.co.uk
newhomes@morfittsmith.co.uk



www.morfittsmith.co.uk



@MorfittSmith



@MorfittSmith



MorfittSmith
Estate & Letting Agent