



# Overton Road, Hillsborough, S6 1WH

Offers Over £240,000

3 1 2



## Why We Love It

Located in the vibrant heart of Hillsborough, this home benefits from a wide range of local amenities, including shops, cafes, and restaurants. Hillsborough Park and Rivelin Valley close by, ideal for leisurely strolls and outdoor activities. With excellent transport links via the Supertram and local buses, commuting to Sheffield city centre or further afield is made easy. This home is perfect for those seeking a move-in-ready property in a lively and well-connected neighbourhood.

## Why You'll Love It

Recently renovated to an exceptional standard, this stunning mid-terrace home in Hillsborough blends modern finishes with classic charm. Enter through the side door into a spacious lounge to your left, featuring wooden floors throughout and a large bay window that floods the room with natural light.

To the right, the open-plan dining room and kitchen showcase the heart of the home. This generous space is elegantly decorated, and the kitchen has been modernized with sleek, high-quality fittings, offering the perfect space for cooking and entertaining. Towards the rear, a convenient WC extension completes the ground floor.

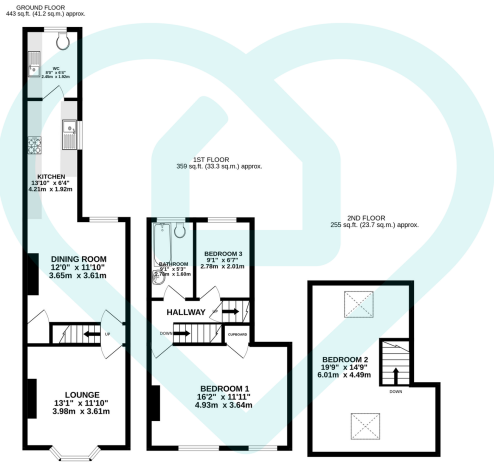
The first floor features a large master bedroom with a built-in storage cupboard, alongside a second, smaller bedroom. The contemporary three-piece bathroom suite is immaculately finished, offering a touch of luxury. The attic bedroom on the second floor provides a cosy, private retreat with plenty of character.

The back garden offers a low-maintenance patio area, perfect for relaxing and enjoying outdoor space, while on-street parking is available for convenience.

Tenure

Leasehold

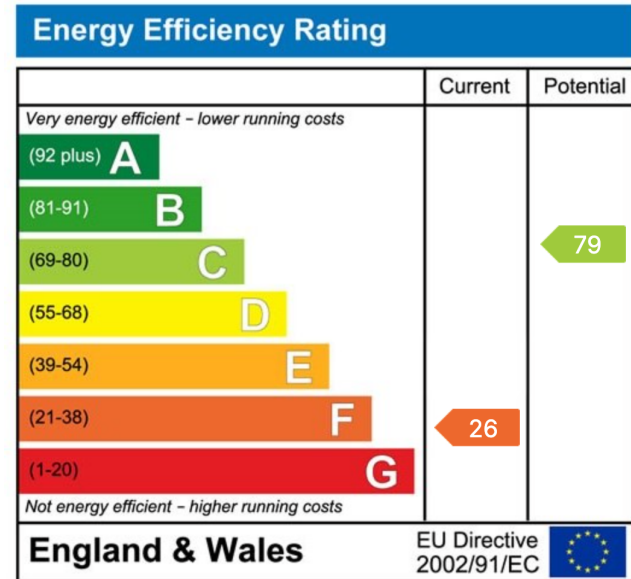




This floor plan is for illustrative purposes only. All measurements and layouts are approximations and do not necessarily capture the precise specifications of the property. No responsibility is taken for any error, omission, or misstatement. We always recommend viewing in person to confirm the exact floor plan of a property. Made with Metropix.



- Close to Local Amenities
- Proximity to Hillsborough Park
- Ideal for Move-In-Ready Convenience
- Recently Renovated
- Modern, Sleek Kitchen
- High-Quality Finishes
- Ground Floor WC Extension
- Key Road Access
- Large Living Space
- On Street Parking



### Sales | Lettings | New Homes

VAT Reg Number: 191 3588 84  
 Company Reg Number: 08610489  
 Company Reg Address: 67 Middlewood Road, Hillsborough, Sheffield, S6 4GX.

The MorfittSmith Building  
 67 Middlewood Road  
 Hillsborough  
 Sheffield  
 S6 4GX

### Get in touch - arrange an appointment

- 0114 232 1764
- sales@morfittsmith.co.uk
- lettings@morfittsmith.co.uk
- newhomes@morfittsmith.co.uk
- www.morfittsmith.co.uk

- @MorfittSmith
- @MorfittSmith
- MorfittSmith Estate & Letting Agent