





# Millmount Road, Meersbrook, S8 9EG

Offers Over £425,000

🛏️ 4 🚿 2 🛋️ 2



## Why We Love It

Nestled in one of Sheffield's most desirable areas, Millmount Road perfectly combines convenience with charm. The location offers a wealth of shopping facilities, schools, parks, and entertainment options, ensuring residents have everything they need for a comfortable lifestyle close at hand.

Whether enjoying a leisurely walk-through nearby parks or a quick visit to local shops, all amenities are just a stone's throw away. Its prime location also makes commuting to other parts of Sheffield effortless, making Millmount Road an excellent choice for families, professionals, and anyone looking for a vibrant community atmosphere.

## Why You'll Love It

Millmount Road is home to a stunning, completely renovated and extended four/five-bedroom residence—everything has been meticulously upgraded. Upon entering, you're greeted by an open and bright hallway illuminated by a skylight, leading to a WC at the far end. To the right, a cosy family lounge features a charming fireplace, perfect for relaxing.

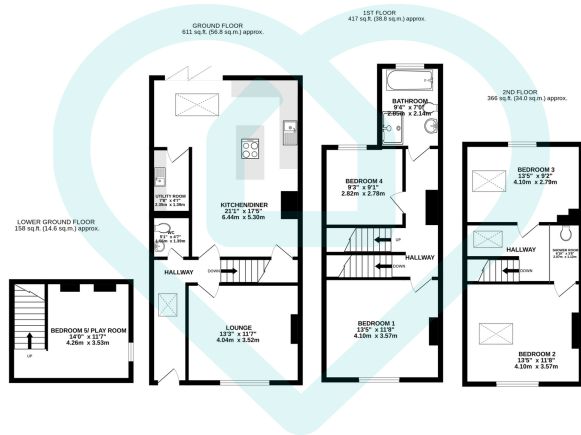
The rear of the house unveils a breathtaking, expansive kitchen diner, designed with no expense spared and no detail overlooked. This space boasts a fully integrated kitchen with ample storage, a practical utility area, an island with elegant marble countertops, and a striking light fixture overhead. The tri-folding doors open to a small but mighty rear garden, beautifully adorned with sunflowers and a log store.

From the kitchen, you have access to the lower ground floor, where you'll find the versatile bedroom, which can also serve as a playroom or office.

The first floor hosts the main bedroom, complete with a characterful exposed brick fireplace, another well-sized bedroom, and a luxurious four-piece bathroom suite. With polished brass fixtures and exquisite tiling. The hallway is further enhanced by another exposed brick







TOTAL FLOOR AREA: 1552 sq.ft. (144.2 sq.m.) approx.

This floor plan is for illustrative purposes only. All measurements and layouts are approximations and do not necessarily capture the precise specifications of the property. No responsibility is taken for any error, omission, or misstatement. We always recommend viewing in person to confirm the exact floor plan of a property. Made with Metropix.



- 5 Bed Home
- Impeccable Design
- Stunning Integrated Kitchen
- High Standard of Insulation
- Beautiful 4 Piece Bathroom Suite
- Fantastic Layout
- Character Features
- Sought After Location
- Plenty of Local Amenities
- Good Schools Nearby



Score	Energy rating	Current	Potential
92+	A		
81-91	B		86 B
69-80	C	79 C	
55-68	D		
39-54	E		
21-38	F		
1-20	G		

**Sales | Lettings | New Homes**

VAT Reg Number: 191 3588 84  
 Company Reg Number: 08610489  
 Company Reg Address: 67 Middlewood Road, Hillsborough, Sheffield, S6 4GX.

The MorfittSmith Building  
 67 Middlewood Road  
 Hillsborough  
 Sheffield  
 S6 4GX

**Get in touch - arrange an appointment**

- 0114 232 1764
- sales@morfittsmith.co.uk
- lettings@morfittsmith.co.uk
- newhomes@morfittsmith.co.uk
- www.morfittsmith.co.uk

- @MorfittSmith
- @MorfittSmith
- MorfittSmith Estate & Letting Agent