



Whinfell Court, Whirlow, S11 9QA

£485,000

3 2 2



Why We Love It

Located in a highly sought-after area, Whinfell Court is positioned just off Ecclesall Road (A625), at the base of the Mayfield Valley walk, and is ideally situated for both local amenities and outdoor activities. Parkhead offers nearby conveniences, while more comprehensive facilities are available at Banner Cross and in the nearby village of Dore.

The area is also well-placed for local walks, with Whirlow Brook Park, Whirlow Hall Farm, and the picturesque Peak District National Park all within easy reach. This modern development, featuring a mix of apartments, bungalows, and houses, offers direct access to Whirlow Hall and Limb Valley walks. Whirlow is a highly desirable residential suburb, known for its excellent school catchment area and convenient access to both nature and city life.

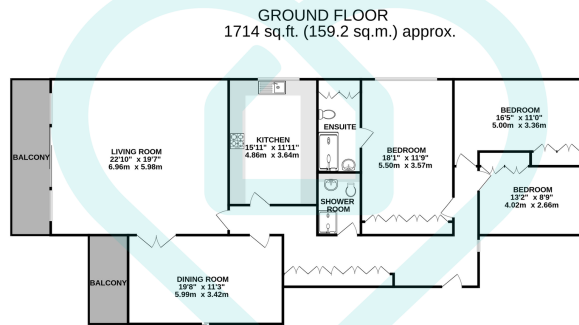
Why You'll Love It

A beautifully proportioned three-bedroom ground-floor flat located within the prestigious Whinfell Court development in Sheffield, S11 9QA. This desirable residence offers the perfect blend of convenience and luxury, situated just off Ecclesall Road and near the scenic Mayfield Valley walk, with the Peak District National Park close by.

This apartment, accessed from the ground floor, boasts stunning views from large balconies in both the spacious lounge and separate dining room. The property features three generously sized double bedrooms, including a master with an en-suite bathroom, a well-appointed family shower room, and a large, well-equipped kitchen ideal for family meals.

The living and dining rooms are particularly noteworthy, offering front-facing balconies that capture breathtaking views towards Holmesfield. The apartment benefits from ample storage solutions, including fitted wardrobes and cupboards. Residents enjoy shared access to an activity centre that includes a swimming pool, squash court, and sauna.



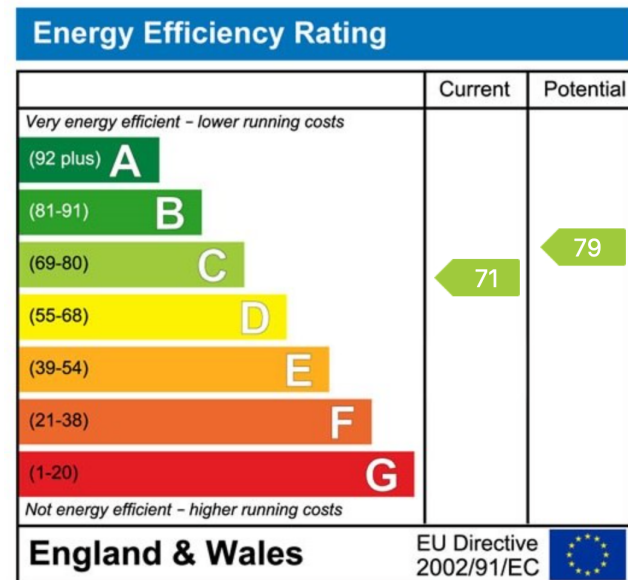


TOTAL FLOOR AREA : 1714 sq.ft. (159.2 sq.m.) approx.

This floor plan is for illustrative purposes only. All measurements and layouts are approximations and do not necessarily capture the precise specifications of the property. No responsibility is taken for any error, omission, or misstatement. We always recommend viewing in person to confirm the exact floor plan of a property. Made with Metropix.



- Garage
- Visitor Parking
- Leisure Facilities such as Swimming Pool
- Large Apartment
- Ground Floor
- 3 Bedrooms
- 2 Balconies
- Desirable Location
- Close to the Peak District
- Close to Key Roads



Sales | Lettings | New Homes

VAT Reg Number: 191 3588 84
Company Reg Number: 08610489
Company Reg Address: 67 Middlewood Road, Hillsborough, Sheffield, S6 4GX.

The MorfittSmith Building
67 Middlewood Road
Hillsborough
Sheffield
S6 4GX

Get in touch - arrange an appointment



0114 232 1764



sales@morfittsmith.co.uk
lettings@morfittsmith.co.uk
newhomes@morfittsmith.co.uk



www.morfittsmith.co.uk



@MorfittSmith



@MorfittSmith



MorfittSmith
Estate & Letting Agent