



Manchester Road, Stocksbridge, S36 2DX

£140,000

🛏️ 2 🚿 1 🚗 1



Why We Love It

Ideally located with excellent public transport links to Sheffield City Centre, Middlewood Tram Stop, and Barnsley Interchange. Nearby amenities include supermarkets, Fox Valley Shopping Centre, Stocksbridge Leisure Centre, and good local schools. Enjoy beautiful country walks in the Peak District and surrounding areas.

Why You'll Love It

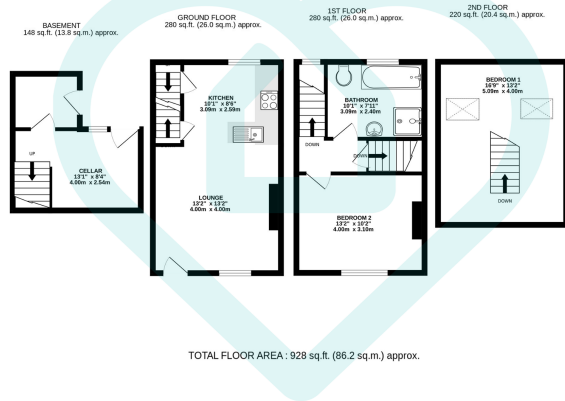
You enter through the front door into the lounge, where the focal point is a feature fireplace, creating a cosy and inviting atmosphere. An open doorway leads into the kitchen, which boasts a range of wall, base, and drawer units with a complementary work surface, incorporating the sink and cooker. From the kitchen, a door opens to steps leading down to the lower ground floor utility/cellar. This space is practical and versatile, with plumbing for a washing machine and tumble dryer, space for a fridge freezer, and direct access to the rear garden.

A staircase rises from the kitchen to the first-floor landing, giving access to the master bedroom and a four-piece bathroom suite, which includes a bath, separate shower cubicle, WC, and wash basin. A further staircase ascends to the second floor, where the attic room benefits from Velux windows to both the front and rear, providing ample natural light and additional versatile space.

Outside, shared access leads to the fully enclosed, easy to maintain rear garden, which overlooks the bowling green. Perfect for socialising and enjoying the sunshine!

This beautiful cottage-style terrace in a convenient and picturesque location is not to be missed. Contact us today to arrange a viewing!

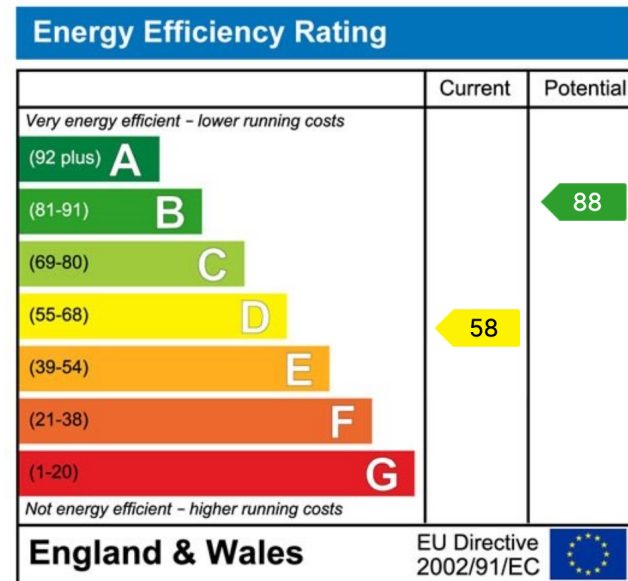




This floor plan is for illustrative purposes only. All measurements and layouts are approximations and do not necessarily capture the precise specifications of the property. No responsibility is taken for any error, omission, or misstatement. We always recommend viewing in person to confirm the exact floor plan of a property. Made with Metropix.



- Stone-Built Cottage Style
- Modern Kitchen with Storage
- Four-Piece Bathroom Suite
- Light-Filled Attic Room
- Overlooks Bowling Fields
- Cosy Lounge with Fireplace
- Versatile Utility/Cellar Space
- Spacious Master Bedroom
- Easy to Maintain Rear Garden
- On Street Parking



Sales | Lettings | New Homes

VAT Reg Number: 191 3588 84
 Company Reg Number: 08610489
 Company Reg Address: 67 Middlewood Road, Hillsborough, Sheffield, S6 4GX.

The MorfittSmith Building
 67 Middlewood Road
 Hillsborough
 Sheffield
 S6 4GX

Get in touch - arrange an appointment

- 0114 232 1764
- sales@morfittsmith.co.uk
- lettings@morfittsmith.co.uk
- newhomes@morfittsmith.co.uk
- www.morfittsmith.co.uk

- @MorfittSmith
- @MorfittSmith
- MorfittSmith Estate & Letting Agent