



Millmount Road, Meersbrook, Sheffield, S8 9EG

Offers In Region Of £450,000

🛏️ 4 🍽️ 2 🚗 3



Why We Love It

Situated in a highly sought-after area of Sheffield, Millmount Road offers the perfect blend of convenience and charm. With plenty of shopping facilities, schools, parks, and entertainment options nearby, residents enjoy easy access to all the amenities needed for a comfortable lifestyle. Whether it's a leisurely stroll through the local parks or a quick trip to the local shops, everything you need is just moments away. Plus, with its convenient location, commuting to other parts of Sheffield is a breeze, making Millmount Road an ideal choice for families, professionals, and anyone seeking a vibrant community atmosphere.

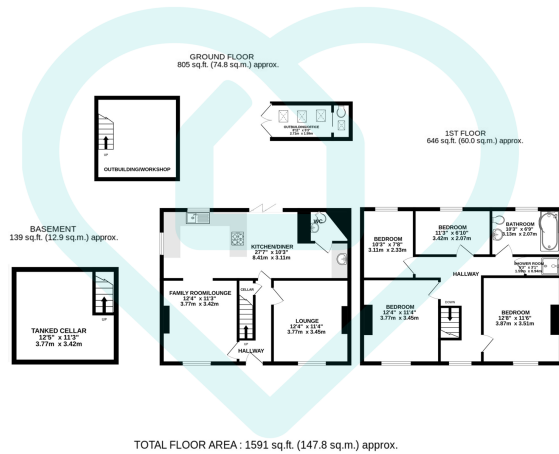
Why You'll Love It

Welcome to Millmount Road, where charm meets functionality in this inviting 4-bedroom semi-detached home, located in a sought-after area. As you approach, a double drive to the side provides ample parking space. The rear garden offers an attractive and well-maintained oasis, complete with seating area, plus a two-story workshop, and a sleek garden office. This versatile office boasts French doors, three skylights, and a convenient WC, providing the perfect environment for work or creative pursuits, while the two-storey workshop presents an excellent opportunity for additional storage and hobby space.

Upon entering the home, you're greeted by an inviting exposed brick hallway that sets the tone for the property's character and warmth. To the left, a family room or additional lounge awaits, boasting a character fireplace and large windows that flood the space with natural light. Continuing through, the extensive kitchen diner impresses with beautiful décor and modern fixtures, complemented by an additional sink and a convenient WC. Adjacent to the kitchen, the family lounge exudes charm with another character fireplace, attractive panelling, and inviting décor, providing the perfect setting for relaxation and entertaining.

Upstairs, four well-appointed bedrooms await, three of which are doubles, each presenting its own unique character and charm. The open hallway upstairs is a standout feature, offering space for a cosy





This floor plan is for illustrative purposes only. All measurements and layouts are approximations and do not necessarily capture the precise specifications of the property. No responsibility is taken for any error, omission, or misstatement. We always recommend viewing in person to confirm the exact floor plan of a property. Made with Metropix.



- Stunning Decor and Recently Renovated
- Large Living Space
- Two Story Workshop in the Garden
- Double Drive
- Outdoor Office Space
- Schools Close By
- 4 Bedrooms
- Sought After Location
- Plenty of Local Amenities
- Greenspace Near By



Score	Energy rating	Current	Potential
92+	A		
81-91	B		83 B
69-80	C		
55-68	D	66 D	
39-54	E		
21-38	F		
1-20	G		

Sales | Lettings | New Homes

VAT Reg Number: 191 3588 84
 Company Reg Number: 08610489
 Company Reg Address: 67 Middlewood Road, Hillsborough, Sheffield, S6 4GX.

The MorfittSmith Building
 67 Middlewood Road
 Hillsborough
 Sheffield
 S6 4GX

Get in touch - arrange an appointment

- 0114 232 1764
- sales@morfittsmith.co.uk
- lettings@morfittsmith.co.uk
- newhomes@morfittsmith.co.uk
- www.morfittsmith.co.uk

- @MorfittSmith
- @MorfittSmith
- MorfittSmith Estate & Letting Agent