



**11 Farley Court Allsop  
Place, London**

**£1,100,000 Leasehold**





# 11 Farley Court Allsop Place, London

326 Mare Street, Hackney, London, E8  
1HA

0208 510 0808  
[www.kings-group.net](http://www.kings-group.net)

- Three Bedroom Flat
- Second Floor
- Needs Refurbishment
- Double Bedrooms
- Concierge
- Lots of Natural Light
- Lease : 111
- Sought After Location
- 0.1 Miles to Baker Street Station
- EPC Rating : Awaiting

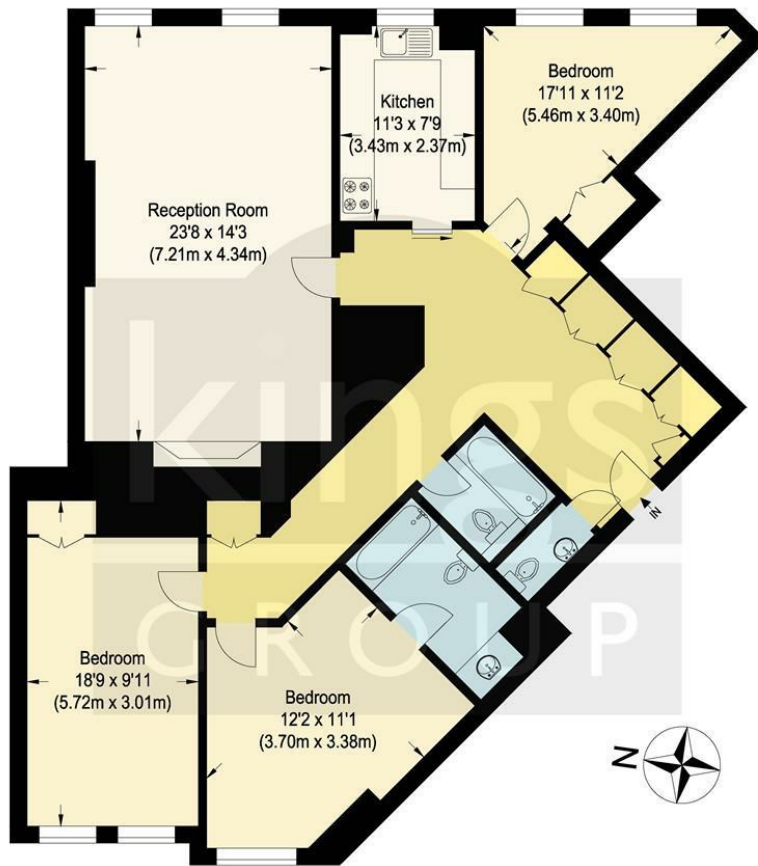
While the property boasts undeniable charm and a prime location, some refurbishment and modernization work are required. This presents a unique opportunity to customize the home to your exact specifications and create a space that perfectly reflects your style and needs.

This is a rare chance to acquire a property with immense potential in one of London's most exclusive neighborhoods. Ideal for professionals, families, or investors, this home offers a blend of prime location and exciting possibilities.

Kings Group are delighted to present this exquisite property situated in one of London's most prestigious and sought-after locations. Nestled in the heart of Marylebone, this charming home offers incredible potential to create a bespoke living space in an area renowned for its sophistication and exclusivity.

Marylebone is celebrated for its village-like atmosphere, featuring tree-lined streets, boutique shops, world-class dining, and cultural landmarks. Located just moments from Regent's Park, one of London's most iconic green spaces, the property offers easy access to tranquil outdoor areas perfect for relaxation and recreation. Excellent transport links are provided by Baker Street and Marylebone stations, connecting you seamlessly to the rest of London and beyond.

A short walk from the property is the bustling Marylebone High Street, offering an array of independent retailers, luxury boutiques, and artisan cafes. Cultural attractions such as the Sherlock Holmes Museum, Madame Tussauds, and the Wigmore Hall ensure that this location is steeped in both history and modern-day appeal.



**Second Floor**

**Farley Court**

Approximate Gross Internal Floor Area : 129.34 sq m / 1392.20 sq ft  
Illustration for identification purposes only, measurements are approximate, not to scale.



THE PROPERTY MISDESCRIPTIONS ACT 1991. The agent has not tested any apparatus, equipment, fixtures or services and so cannot verify that they are in working order, or fit for the purpose. References to the Tenure of a property are based on information supplied by the vendor. The agent has not had sight of the Title documents. A buyer is advised to obtain verification from their Solicitor or Surveyor





326 Mare Street, Hackney, London, E8  
1HA

0208 510 0808  
[www.kings-group.net](http://www.kings-group.net)



**Zoopla.co.uk**



**rightmove.co.uk**  
The UK's number one property website

