



Nellie Cressall Way, London, E3 4RQ

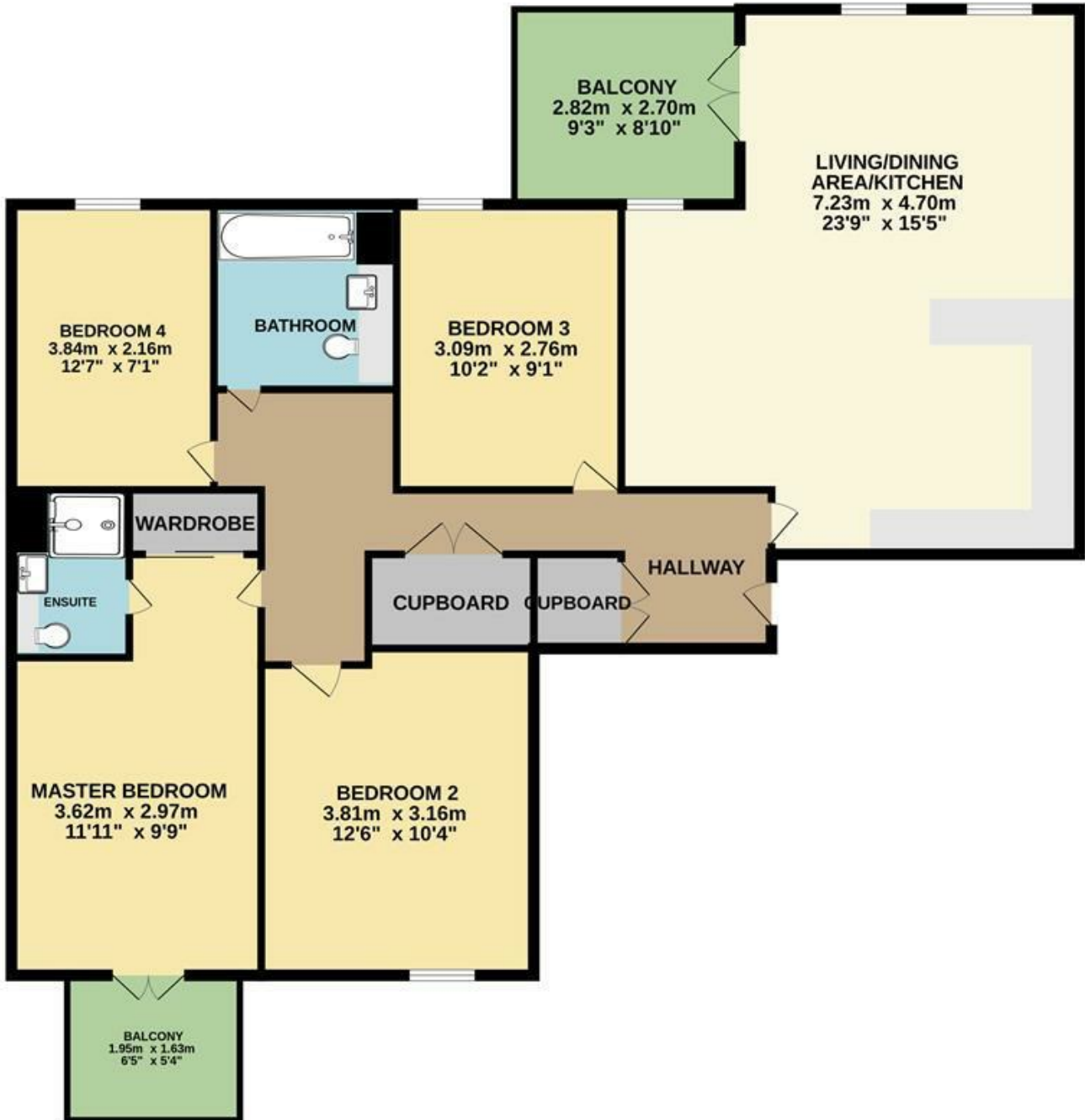
£700,000 Leasehold

Kings Group are delighted to present this stunning property located on Lariat Court within the highly sought-after Nellie Cressall Way development in London, E3. This modern residence showcases a high standard of living with its contemporary design and flawless condition throughout. The property boasts a spacious and well-lit open-plan living area, seamlessly integrated with a sleek, fully-fitted kitchen featuring top-of-the-line appliances. Expansive windows allow natural light to flood the space, enhancing the elegant finishes and creating a welcoming atmosphere perfect for relaxation and entertainment.

Nestled within a vibrant new development, this property offers an ideal blend of comfort and convenience. The bedroom is generously sized, offering ample storage and a tranquil retreat. The pristine bathroom is finished with premium fixtures, contributing to the overall luxurious feel of the home. Residents will appreciate the excellent location, providing easy access to local amenities, parks, and transport links, making it an ideal choice for professionals and families alike. With its impeccable condition and prime location, this property represents a fantastic opportunity for those seeking a contemporary urban lifestyle.

Nellie Cressall Way, London, E3 4RQ

7TH FLOOR



Whilst every attempt has been made to ensure the accuracy of the floorplan contained here, measurements of doors, windows, rooms and any other items are approximate and no responsibility is taken for any error, omission or mis-statement. This plan is for illustrative purposes only and should be used as such by any prospective purchaser. The services, systems and appliances shown have not been tested and no guarantee as to their operability or efficiency can be given.
Made with Metropix ©2024



Associated Offices in London, Essex and Hertfordshire
Kings Head Office Tudor Lodge, Burton Lane, Goffs Oak, Hertfordshire EN7 6SY Tel: 01707-872000

