



Cadgwith Drive
Derby



Property Description

Situated on Cadgwith Drive in the popular suburb of Allestree, this three-bedroom property presents an excellent opportunity to create a family home tailored to your taste. While it does require some modernisation, this home offers generous living spaces and a highly desirable location, making it perfect for those looking to add value. On the ground floor, you'll find a spacious lounge leading to a dedicated dining area, ideal for family meals or entertaining. The kitchen diner provides plenty of space for cooking and casual dining, while a convenient downstairs shower room adds extra practicality. Upstairs, there are three well-sized bedrooms and a family bathroom. Outside, the property includes a private driveway with off-road parking, a garage, and a good-sized rear garden that offers plenty of potential for landscaping or outdoor entertaining.

Located in Allestree, this property enjoys access to a wealth of local amenities. The area boasts several well-regarded schools, parks, and the popular Markeaton Park, making it a favored choice for families. The Park Farm Shopping Centre, with a range of shops, cafes, and essentials, is within easy reach, as are larger retail stores nearby. Commuters will appreciate the excellent transport links, with quick access to the A38 and A52, providing routes to Derby city centre, surrounding towns, and major motorway connections. Regular bus services also make getting into Derby and nearby areas convenient.

Situated on Cadgwith Drive in the popular suburb of Allestree, this three-bedroom property presents an excellent opportunity to create a family home tailored to your taste. While it does require some modernisation, this home offers generous living spaces and a highly desirable location, making it perfect for

create a family home tailored to your taste. While it does require some modernisation, this home offers generous living spaces and a highly desirable location, making it perfect for those looking to add value. On the ground floor, you'll find a spacious lounge leading to a dedicated dining area, ideal for family meals or entertaining. The kitchen diner provides plenty of space for cooking and casual dining, while a convenient downstairs shower room adds extra practicality. Upstairs, there are three well-sized bedrooms and a family bathroom. Outside, the property includes a private driveway with off-road parking, a garage, and a good-sized rear garden that offers plenty of potential for landscaping or outdoor entertaining.

Located in Allestree, this property enjoys access to a wealth of local amenities. The area boasts several well-regarded schools, parks, and the popular Markeaton Park, making it a favored choice for families. The Park Farm Shopping Centre, with a range of shops, cafes, and essentials, is within easy reach, as are larger retail stores nearby. Commuters will appreciate the excellent transport links, with quick access to the A38 and A52, providing routes to Derby city centre, surrounding towns, and major motorway connections. Regular bus services also make getting into Derby and nearby areas convenient.

Situated on Cadgwith Drive in the popular suburb of Allestree, this three-bedroom property presents an excellent opportunity to create a family home tailored to your taste. While it does require some modernisation, this home offers generous living spaces and a highly desirable location, making it perfect for

those looking to add value. On the ground floor, you'll find a spacious lounge leading to a dedicated dining area, ideal for family meals or entertaining. The kitchen diner provides plenty of space for cooking and casual dining, while a convenient downstairs shower room adds extra practicality. Upstairs, there are three well-sized bedrooms and a family bathroom. Outside, the property includes a private driveway with off-road parking, a garage, and a good-sized rear garden that offers plenty of potential for landscaping or outdoor entertaining.

Located in Allestree, this property enjoys access to a wealth of local amenities. The area boasts several well-regarded schools, parks, and the popular Markeaton Park, making it a favored choice for families. The Park Farm Shopping Centre, with a range of shops, cafes, and essentials, is within easy reach, as are larger retail stores nearby. Commuters will appreciate the excellent transport links, with quick access to the A38 and A52, providing routes to Derby city centre, surrounding towns, and major motorway connections. Regular bus services also make getting into Derby and nearby areas convenient.

Situated on Cadgwith Drive in the popular suburb of Allestree, this three-bedroom property presents an excellent opportunity to create a family home tailored to your taste. While it does require some modernisation, this home offers generous living spaces and a highly desirable location, making it perfect for those looking to add value. On the ground floor, you'll find a spacious lounge leading to a dedicated dining area, ideal for family meals or entertaining. The kitchen diner provides plenty of space for cooking and casual dining, while a convenient downstairs shower room adds extra practicality. Upstairs, there are three well-sized bedrooms and a family bathroom. Outside, the property includes a

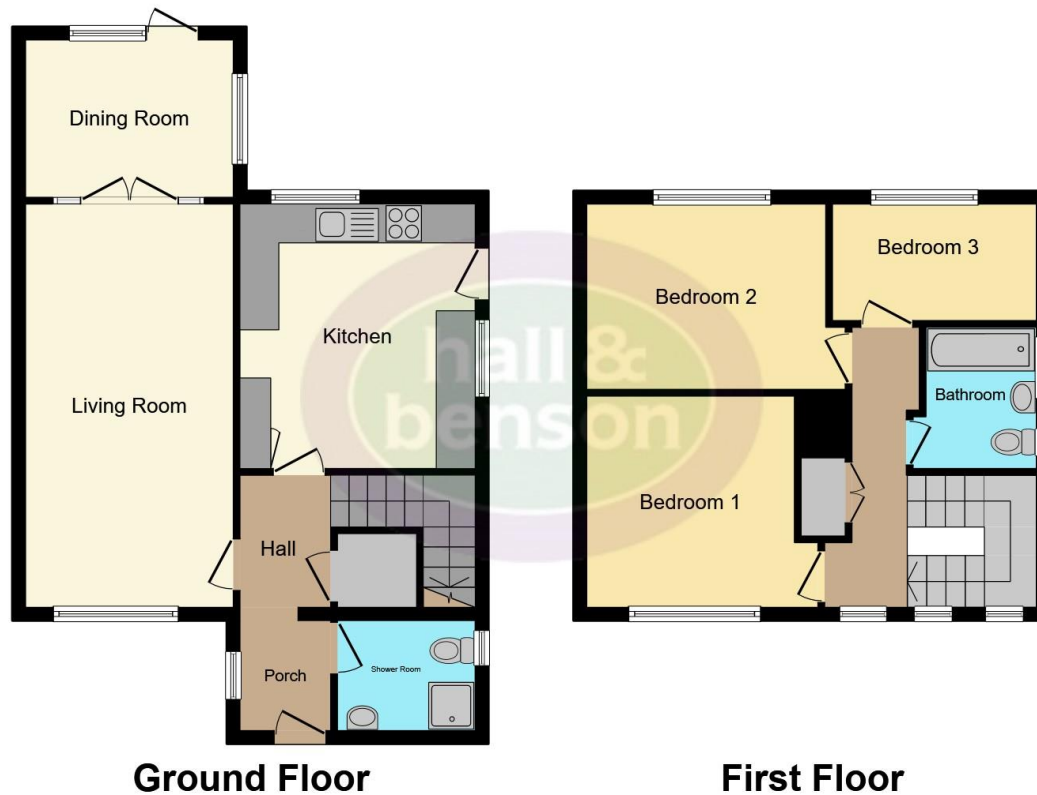
private driveway with off-road parking, a garage, and a good-sized rear garden that offers plenty of potential for landscaping or outdoor entertaining.

Located in Allestree, this property enjoys access to a wealth of local amenities. The area boasts several well-regarded schools, parks, and the popular Markeaton Park, making it a favored choice for families. The Park Farm Shopping Centre, with a range of shops, cafes, and essentials, is within easy reach, as are larger retail stores nearby. Commuters will appreciate the excellent transport links, with quick access to the A38 and A52, providing routes to Derby city centre, surrounding towns, and major motorway connections. Regular bus services also make getting into Derby and nearby areas convenient.









This floor plan is for illustrative purposes only. It is not drawn to scale. Any measurements, floor areas (including any total floor area), openings and orientation are approximate. No details are guaranteed, they cannot be relied upon for any purpose and they do not form part of any agreement. No liability is taken for any error, omission or misstatement. A party must rely upon its own inspection(s). Powered by www.focalagent.com

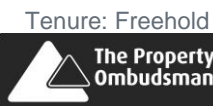
To view this property please contact Hall & Benson on

T 01332 555 945
E allestree@hallandbenson.co.uk

E7 Park Farm Centre Park Farm Drive
 DERBY DE22 2QQ

EPC Rating: D

view this property online hallandbenson.co.uk/Property/ATR102032



1. MONEY LAUNDERING REGULATIONS Intending purchasers will be asked to produce identification documentation at a later stage and we would ask for your co-operation in order that there will be no delay in agreeing the sale. 2. These particulars do not constitute part or all of an offer or contract. 3. The measurements indicated are supplied for guidance only and as such must be considered incorrect. Potential buyers are advised to recheck measurements before committing to any expense. 4. We have not tested any apparatus, equipment, fixtures, fittings or services and it is in the buyers interest to check the working condition of any appliances.

Hall & Benson is a trading name of Connells Residential which is registered in England and Wales under company number 1489613, Registered Office is Cumbria House, 16-20 Hockliffe Street, Leighton Buzzard, Bedfordshire, LU7 1GN. VAT Registration Number is 500 2481 05.

See all our properties at www.hallandbenson.co.uk | www.rightmove.co.uk | www.zoopla.co.uk

Property Ref: ATR102032 - 0004