



Kensey Road
Mickleover Derby



Property Description

Welcome to this charming three-bedroom semi-detached house located on Kensey Road, in the sought-after suburb of Mickleover. This well-presented home offers modern family living with a range of desirable features.

Upon entering, you'll find a welcoming lounge perfect for relaxation, alongside a kitchen diner with ample room for cooking and entertaining. The ground floor also includes a convenient cloakroom/ W/C. Upstairs, there are three well-proportioned bedrooms. The master bedroom benefits from an en-suite, while the other two bedrooms share a modern family bathroom.

Outside, the property features a large, mostly laid-to-lawn rear garden, ideal for outdoor activities and gatherings. There are also allocated parking spaces to the side of the property for added convenience.

Located in the vibrant community of Mickleover, this home provides easy access to a range of local amenities including shops, schools, and leisure facilities. Mickleover offers excellent transport links, with nearby access to the A38 and A50, making commuting to Derby city centre and beyond straightforward. It's also well-served by public transport, providing convenient bus routes into Derby and the surrounding areas.

This property is ideal for families and professionals alike, offering comfortable living in a popular, well-connected location.

Kitchen/Diner

10' 5" x 14' 11" (3.17m x 4.55m)

Lounge

16' 2" x 12' 2" (4.93m x 3.71m)

Bedroom One

13' 9" x 8' 5" (4.19m x 2.57m)

En-Suite

Bedroom Two

10' 2" x 8' 5" (3.10m x 2.57m)

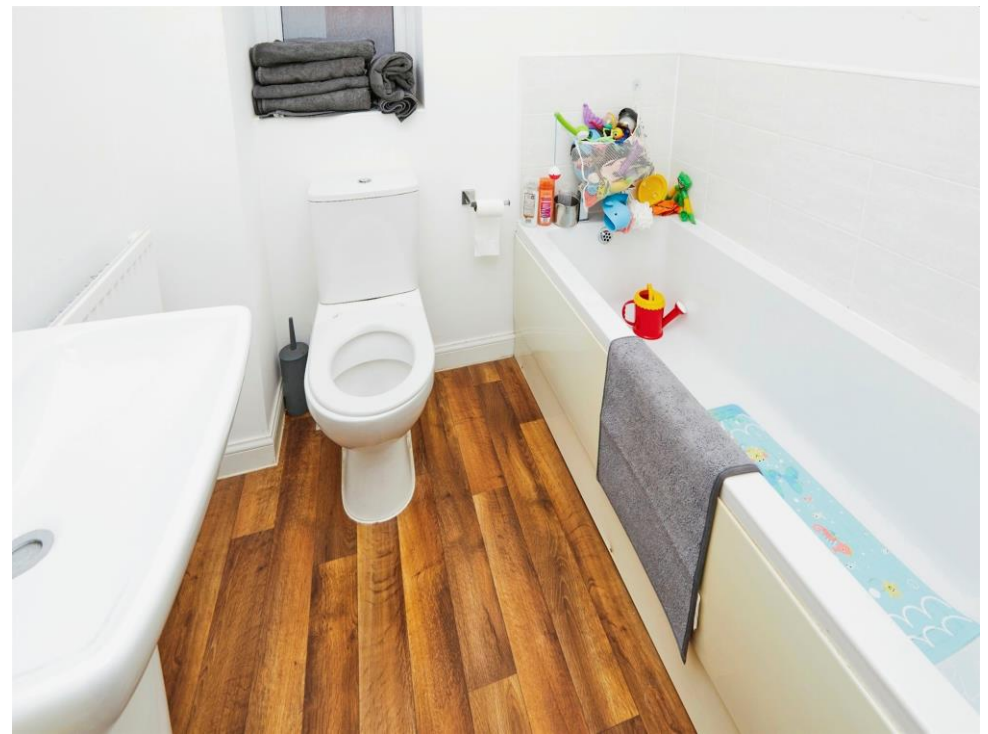
Bedroom Three

8' 9" x 6' 3" (2.67m x 1.91m)

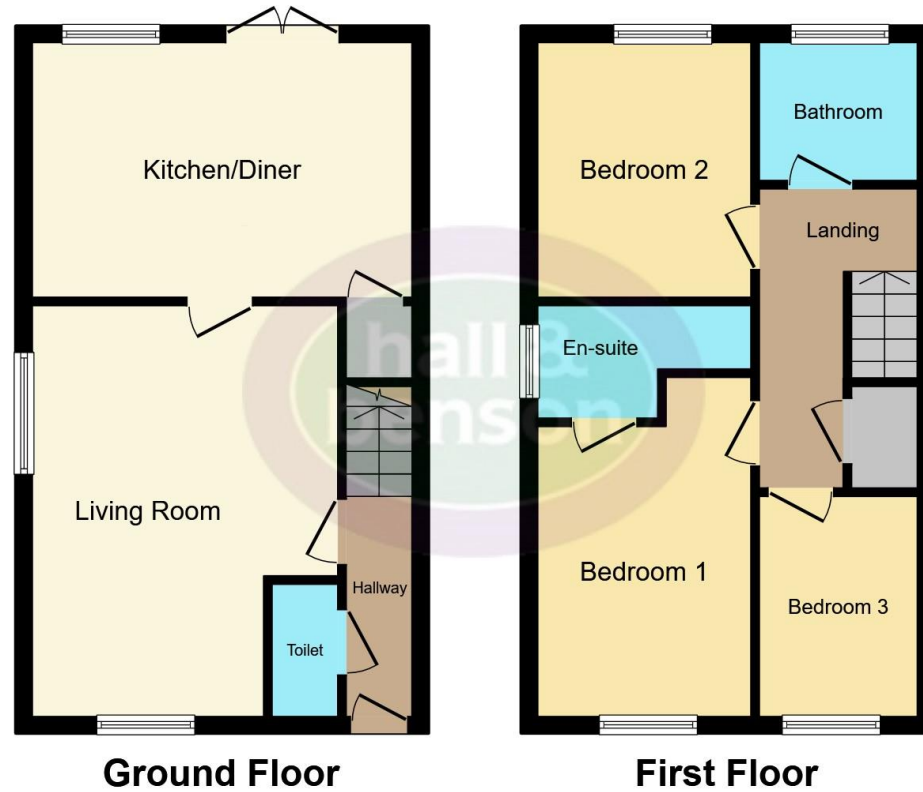
Exterior

Rear garden, allocated parking spaces.









This floor plan is for illustrative purposes only. It is not drawn to scale. Any measurements, floor areas (including any total floor area), openings and orientation are approximate. No details are guaranteed, they cannot be relied upon for any purpose and they do not form part of any agreement. No liability is taken for any error, omission or misstatement. A party must rely upon its own inspection(s). Powered by www.focalagent.com

To view this property please contact Hall & Benson on

T 01332 555 945
E allestree@hallandbenson.co.uk

E7 Park Farm Centre Park Farm Drive
 DERBY DE22 2QQ

EPC Rating: B

view this property online hallandbenson.co.uk/Property/ATR102082

Tenure: Freehold



1. MONEY LAUNDERING REGULATIONS Intending purchasers will be asked to produce identification documentation at a later stage and we would ask for your co-operation in order that there will be no delay in agreeing the sale. 2. These particulars do not constitute part or all of an offer or contract. 3. The measurements indicated are supplied for guidance only and as such must be considered incorrect. Potential buyers are advised to recheck measurements before committing to any expense. 4. We have not tested any apparatus, equipment, fixtures, fittings or services and it is in the buyers interest to check the working condition of any appliances.

Hall & Benson is a trading name of Connells Residential which is registered in England and Wales under company number 1489613, Registered Office is Cumbria House, 16-20 Hockliffe Street, Leighton Buzzard, Bedfordshire, LU7 1GN. VAT Registration Number is 500 2481 05.

See all our properties at www.hallandbenson.co.uk | www.rightmove.co.uk | www.zoopla.co.uk

Property Ref: ATR102082 - 0002