



St. Mawes Close
Allestree Derby



Property Description

Welcome to this beautifully refurbished three-bedroom detached house on St. Mawes Close, located in the sought-after area of Allestree. This stunning property offers a perfect blend of modern living and comfort, with neutral décor throughout, creating a bright and welcoming atmosphere. As you enter, you are greeted by a spacious entrance hallway leading to a convenient cloakroom/WC along with a study room and separate lounge space. The impressive open-plan lounge is the heart of the home, featuring a cosy log burner and four patio doors that flood the space with natural light, providing easy access to the rear garden. The lounge flows into the stylish kitchen diner, fitted with integrated appliances along with sleek, modern cabinetry. A separate utility room offers additional storage and functionality. This versatile home also boasts a play/games room, ideal for family activities or entertainment. Upstairs, there are three bedrooms, including a luxurious master bedroom with en-suite, offering privacy and relaxation. The family is also well-served by a contemporary family bathroom. Externally, the property features a driveway with access to a storage room. The rear garden offers an excellent outdoor space, with a well-maintained lawn and patio area, perfect for relaxing or entertaining. Situated in the popular Allestree area, this home benefits from an array of local amenities, including Allestree Park, shops, restaurants, and schools, all within close proximity.

Entrance Hallway

Cloakroom/W/C

Study Room

9' 5" x 8' 6" (2.87m x 2.59m)

Play/Games Room

10' 5" x 12' 2" (3.17m x 3.71m)

Open Plan Kitchen/Diner

34' 9" x 20' 6" (10.59m x 6.25m)

Utility Room

8' 7" x 10' 11" (2.62m x 3.33m)

First Floor Landing

Master Bedroom With En-Suite

13' 10" x 22' 3" (4.22m x 6.78m)

Bedroom Two

20' 7" x 12' 5" (6.27m x 3.78m)

Bedroom Three

13' 4" x 11' 4" (4.06m x 3.45m)

Main Bathroom

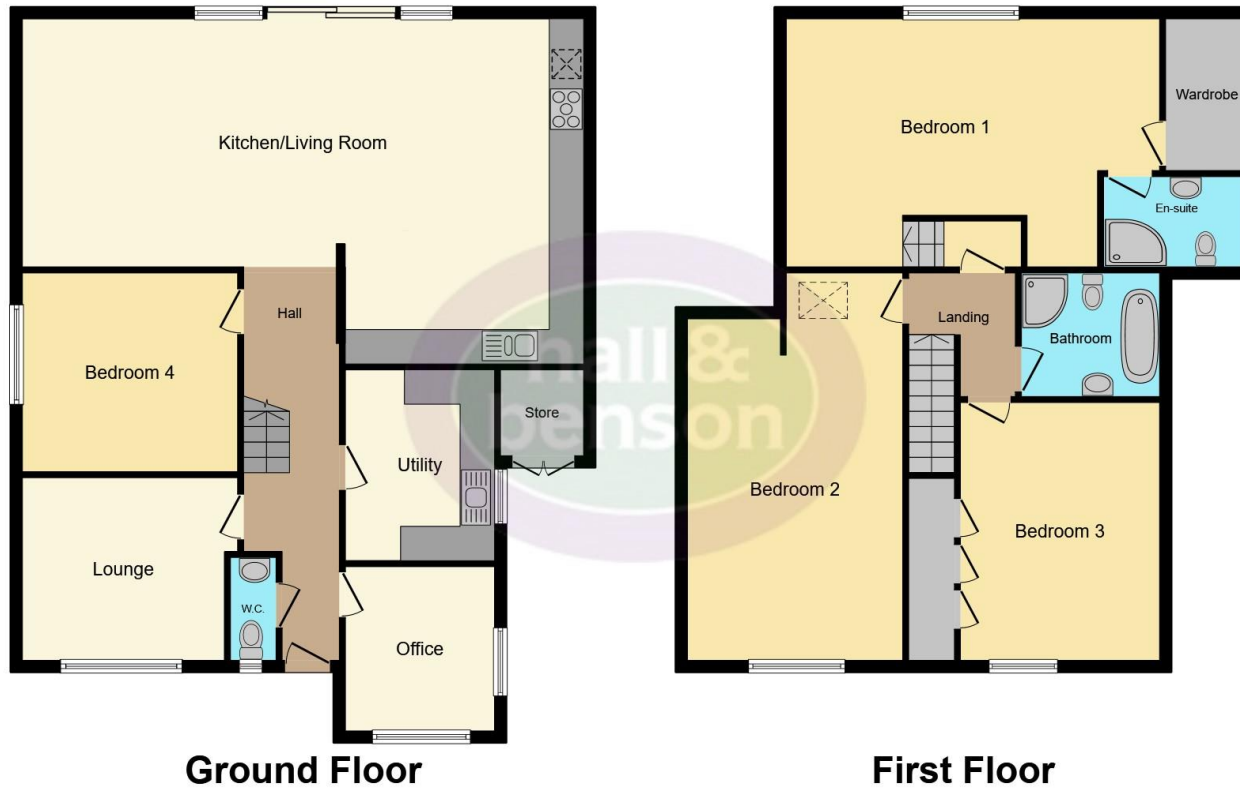
Storage Room

Front & Rear Garden









This floor plan is for illustrative purposes only. It is not drawn to scale. Any measurements, floor areas (including any total floor area), openings and orientation are approximate. No details are guaranteed, they cannot be relied upon for any purpose and they do not form part of any agreement. No liability is taken for any error, omission or misstatement. A party must rely upon its own inspection(s). Powered by www.focalagent.com

To view this property please contact Hall & Benson on

T 01332 555 945
E allestree@hallandbenson.co.uk

E7 Park Farm Centre Park Farm Drive
 DERBY DE22 2QQ

EPC Rating: C

view this property online hallandbenson.co.uk/Property/ATR102027



1. MONEY LAUNDERING REGULATIONS Intending purchasers will be asked to produce identification documentation at a later stage and we would ask for your co-operation in order that there will be no delay in agreeing the sale. 2. These particulars do not constitute part or all of an offer or contract. 3. The measurements indicated are supplied for guidance only and as such must be considered incorrect. Potential buyers are advised to recheck measurements before committing to any expense. 4. We have not tested any apparatus, equipment, fixtures, fittings or services and it is in the buyers interest to check the working condition of any appliances.

Hall & Benson is a trading name of Connells Residential which is registered in England and Wales under company number 1489613, Registered Office is Cumbria House, 16-20 Hockliffe Street, Leighton Buzzard, Bedfordshire, LU7 1GN. VAT Registration Number is 500 2481 05.

See all our properties at www.hallandbenson.co.uk | www.rightmove.co.uk | www.zoopla.co.uk

Property Ref: ATR102027 - 0007