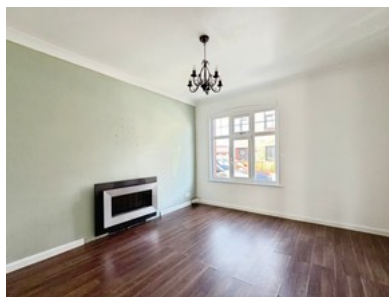
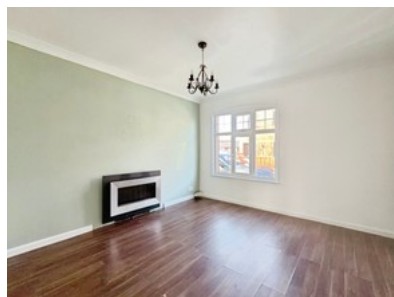


Marsh Lane

 **Beercocks**



- ✓ Full Walk-through Video!
- ✓ Two-bedroom Bungalow In Barton
- ✓ Modern Kitchen And Recently Recarpeted
- ✓ Peaceful Garden And Parking Area At The Rear
- ✓ Short Walk To Local Shops
- ✓ Ready To Move Into, With Potential To Update The Bathroom
- ✓ No Onward Chain For A Smooth Purchase Process
- ✓ Freehold
- ✓ Council Tax Band A
- ✓ Epc C



Bedroom  1 Bathroom  1 Reception  1

Guide Price

£110,000