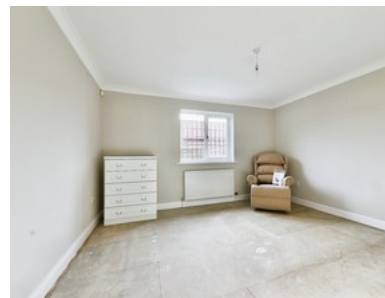


# St. Peter's Orchard

## INVITING OFFERS £215,000 - £230,000



- ✓ South facing Living dining Room With Bay Window
- ✓ Level Walk To Shops, Cafs, And Amenities
- ✓ Council Tax Band B
- ✓ Easy-to-maintain Garden With Plenty Of Sunlight
- ✓ Fitted Kitchen And Bathroom With Shower Bath
- ✓ Double width Driveway And Attached Brick Garage
- ✓ No Onward Chain, Ready To Move In
- ✓ Freehold
- ✓ Council Tax Band B



Bedroom 2 Bathroom 1 Reception 1

Guide Price

**£215,000**