

9 HEATHER COURT GARDENS
SUTTON COLDFIELD
B74 2ST


ASTON KNOWLES
CHARTERED SURVEYORS AND ESTATE AGENTS



ACCOMMODATION

An Exquisite Contemporary Home in the Prestigious Four Oaks Estate.

Accommodation

Ground floor:

Reception Hall
Kitchen/breakfast/family room
Luxury drawing room
Entertainment room
Guest Cloakroom
Under stairs cupboard

First floor:

Master bedroom with en-suite bathroom and walk in dressing room
Guest bedroom two with en-suite and walk in dressing room
Three further double bedrooms with en-suite
Bedroom six/Study

Gardens and Grounds:

Private Electric Gated driveway
Extensive Stone paved driveway
Manicured rear garden
Garden room/ Gymnasium
Double integral garage

EPC rating : D

These particulars are intended only as a guide and must not be relied upon as statements of fact. Your attention is drawn to the Important Notice on the last page of the text.



Situation

The property is located on Heather Court Gardens, a private road on the sought-after Four Oaks Estate. The Four Oaks Estate is an exclusive residential area lying along the northern and eastern borders of Sutton Park. Originally the site of Four Oaks Hall, the house and its surrounding land were sold in 1868 to Hubert de Burgh-Canning, 2nd Marquess of Clanricarde for residential development. Four Oaks Hall was demolished in 1898. Covenants have ensured the Four Oaks Estate has been preserved as a most attractive and highly desirable place to live with tree-lined private roads; their names derived from its historical past. The Estate is now situated in a Conservation Area.

Sutton Park a short walk away is a designated Site of Special Scientific Interest and offers great scope for walking, golf and a variety of outdoor pursuits. Four Oaks tennis club is also close by.

Nearby Mere Green provides a good selection of everyday shops including M&S and Sainsbury's supermarkets together with Mulberry Walk development which hosts a fabulous range of eateries, cafes, and restaurants.

One of the many advantages of the area is its location for fast communications to the M42, M6, M6 Toll, and Birmingham International/NEC. The Cross City line from Four Oaks station, only a short walk from the property, connects to main line services from Birmingham New Street.

The town of Sutton Coldfield provides an excellent choice of shops, restaurants and schooling including Bishop Vesey's Grammar School, Sutton Coldfield Grammar School for Girls and Highclare School. The independent King Edward's schools are also easily reached from Four Oaks station. Purchasers are advised to check with the council for up to date school catchment areas.

Description of Property

Nestled within the highly sought-after Four Oaks Estate, this stunning five-bedroom detached residence has been recently renovated and extended to the highest of standards. Set behind secure electric gates, the home exudes modern luxury, combining sleek architectural design with timeless elegance.

Upon entering, you are welcomed by an impressive entrance hall.

The spacious living areas are designed for both relaxed family living and entertaining on a grand scale, featuring bespoke finishes and state-of-the-art fittings.

The heart of the home is the spectacular open-plan kitchen—a masterpiece of contemporary elegance and functionality, thoughtfully designed for both family living and entertaining. This stunning space features bespoke hand-painted cabinetry in soft neutral tones, beautifully contrasted by a striking charcoal central island. The island itself is a statement piece, equipped with a state-of-the-art induction hob with built-in extraction, a Quooker tap providing sparkling, chilled, and boiling water, and ample seating for up to eight people.

Enhancing the kitchen's practicality, there are two double ovens with integrated microwave ovens above, along with two built-in dishwashers for seamless convenience. At either end of the kitchen, beautifully appointed pantries feature quartz worktops and ambient lighting, offering both style and functionality in equal measure.

The expansive floor-to-ceiling French doors seamlessly connect the kitchen to the beautifully landscaped garden, flooding the space with natural light and offering a seamless transition to outdoor dining and entertaining. The herringbone flooring adds a touch of timeless charm, perfectly complementing the luxurious yet homely ambiance of this stunning space.

This impeccably designed kitchen is not only a chef's dream but also a central focal point of this exceptional home.

Within the kitchen is a beautifully designed family area, thoughtfully arranged to provide a comfortable yet stylish retreat. A bespoke media wall with integrated storage offers the perfect setting for movie nights and relaxed evenings, while custom built-in cabinetry provides practical yet elegant storage solutions.

Large windows overlooking the rear garden allow natural light to pour in, enhancing the tranquil

and welcoming ambiance of this space. Thoughtfully positioned, the family area maintains a sense of openness while creating a cozy and intimate atmosphere, making it the ideal place to unwind.

This striking and stylish entertainment room has been designed to offer the perfect space for social gatherings and lively evenings.

A feature of the room is the stunning bespoke bar area which serves as a focal point for entertaining. Featuring mirrored shelving, glass-fronted display units, and a fully stocked selection of spirits and glassware, this elegant bar is perfect for hosting guests in style.

The room is bathed in natural light, thanks to the full-height black-framed windows and French doors that open directly onto the landscaped garden, making it ideal for indoor-outdoor entertaining.

Dark, moody tones on the walls contrast beautifully with the herringbone flooring, and soft lighting, creating an upscale ambiance.

The drawing room in contrast is designed for both refined relaxation and sophisticated entertaining, blending timeless elegance with modern luxury.

At the heart of the space is a striking media wall with display shelving and bespoke cabinetry provides useful storage while enhancing the room's refined aesthetic, with custom-crafted paneled doors and soft accent lighting that add a touch of opulence.

One of the room's features is the grand walk-in bay window, spanning from floor to ceiling which floods the space with natural light.

Off the hall is also the beautifully designed downstairs cloakroom features a floating concealed flush WC. The spacious layout is enhanced by large marble-effect floor tiles. A statement vanity unit takes centre stage, featuring a large inset basin set within a sleek countertop with generous storage cabinets below.

Upstairs, the luxurious principal suite offers a private sanctuary with a sumptuous en-suite bathroom boasting a stunning standalone bath, a double shower, and two separate vanity units. There is also a bespoke dressing room, entered through stylish black pocket doors, the space immediately exudes a sense of exclusivity and refinement.

Guest Bedroom Two boasts its own walk-in dressing room and en suite, while three additional generously sized bedrooms provide stylish accommodation. Each is complemented by a beautifully appointed en suite, ensuring both comfort and privacy for every occupant.

The sixth bedroom is currently utilised as a dedicated home study, offering a quiet and inspiring workspace.

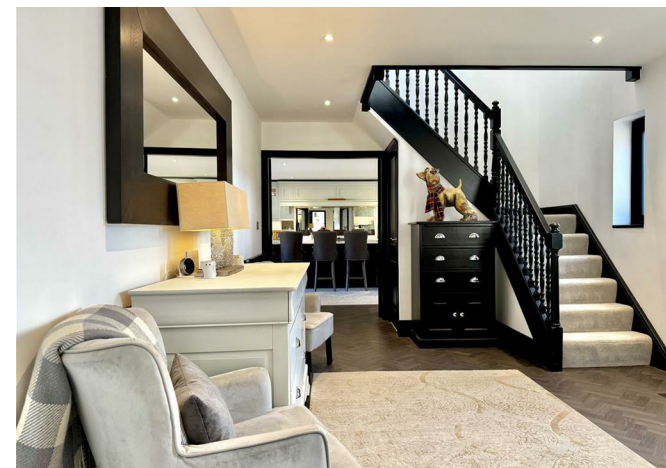
Gardens and Grounds

The gardens and grounds surrounding the property are equally as impressive. An electric secure gate and a stone-paved driveway provide for extensive parking and access to the double garage. Miniature shrubs line the windows and the front of the house, enhancing its charm. The rear garden is framed by mature shrubs and hedges, ensuring privacy and security, while the patio area—perfect for alfresco dining and entertaining—is sheltered by thick oak beams that form a stunning pergola, ideal for growing vines.

For those seeking additional leisure and fitness space, the garden room/gymnasium is a standout feature, with its gorgeous Herringbone parquet flooring and three large windows with bi-folding doors that open directly onto the garden, offering both natural light and a seamless connection to the outdoors. A garden shed provides convenient storage.

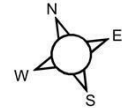
Distances

Sutton Coldfield town centre 0.9 miles
Lichfield 7.7 miles
Birmingham 8.8 miles
Birmingham International/NEC 13.7 miles



ASTON KNOWLES

Heather Court Gardens, Sutton Coldfield
Approximate Gross Internal Area
Main House = 4315 Sq Ft/401 Sq M
Garage = 429 Sq Ft/40 Sq M
Gym = 212 Sq Ft/20 Sq M
Total = 4956 Sq Ft/461 Sq M



M6 Toll 4.8 miles
M6 (J7) 6.5 miles
M42 (J9) 7 miles
(Distances approximate)

Directions from Aston Knowles

From Sutton Coldfield town centre, take the A5127 Lichfield Road towards Four Oaks. At the first roundabout take the first exit onto Wentworth Road. Heather Court Gardens is the first road on the right-hand side.

Terms

Tenure: Freehold
Local authority: Birmingham City Council
Tax band: G
Average area broadband speed : Broadband Average speed in area : 100 Mbps

Services

Mains gas, water, drainage and electricity are connected.

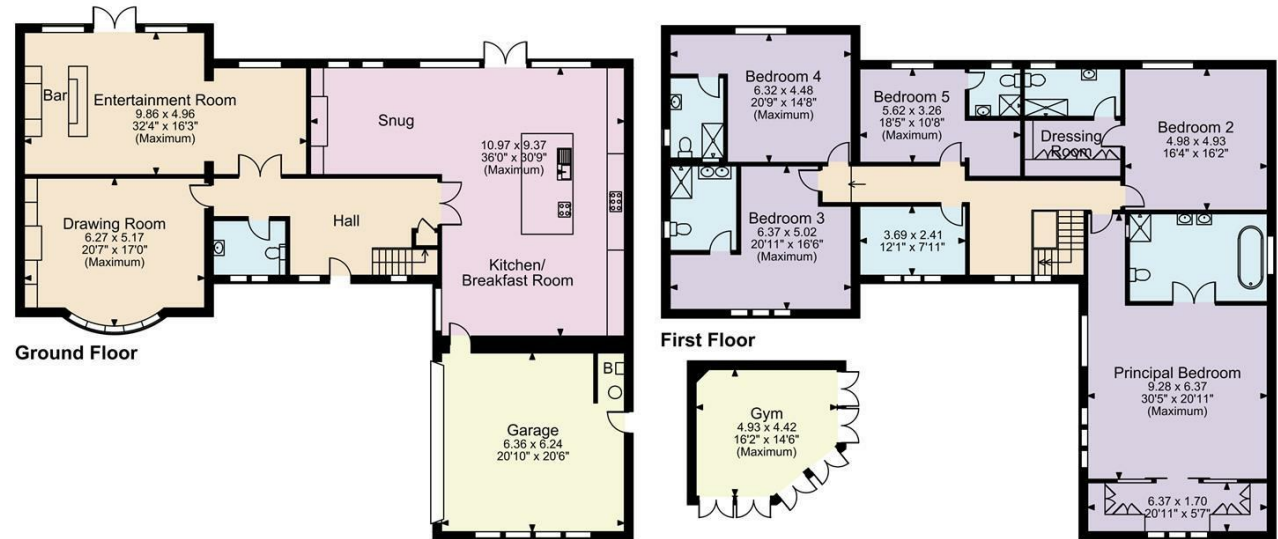
Viewings

All viewings are strictly by prior appointment with agents Aston Knowles on 0121 362 7878.

Disclaimer

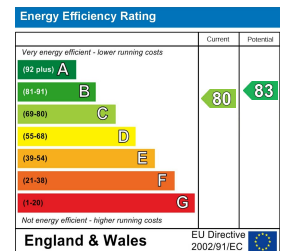
Every care has been taken with the preparation of these particulars, but complete accuracy cannot be guaranteed. If there is any point which is of particular interest to you, please obtain professional confirmation. Alternatively, we will be pleased to check the information for you. These particulars do not constitute a contract or part of a contract. All measurements quoted are approximate. Photographs are reproduced for general information and it cannot be inferred that any item shown is included in the sale.

Photographs taken: February 2025
Particulars prepared: February 2025



FOR ILLUSTRATIVE PURPOSES ONLY - NOT TO SCALE

The position & size of doors, windows, appliances and other features are approximate only.
© ehouse. Unauthorised reproduction prohibited. Drawing ref. dig/8639148/MKB



Every care has been taken with the preparation of these Particulars, but complete accuracy cannot be guaranteed. If there is any point, which is of particular importance to you, please obtain professional confirmation. Alternatively, we will be pleased to check the information for you. These Particulars do not constitute a contract or part of a contract. All measurements quoted are approximate. Photographs are reproduced for general information and it cannot be inferred that any item shown is included in the sale.

8 High Street, Sutton Coldfield, B72 1XA

0121 362 7878 • enquiries@astonknowles.com • www.astonknowles.com