



nest
ESTATES



Redcot Gardens,

Stamford, PE9 1DE

£140,000

SUMMARY

- No Onward Chain
- Two Bedroom Top Floor Apartment
- Off Road Parking
- Short Walk To Town Centre
- Kitchen
- Bathroom
- Panoramic Views Over Stamford Centre
- Viewings Advised





Top-floor two-bedroom apartment with panoramic views over Stamford. Situated just a short stroll from Stamford's vibrant town centre, this charming top-floor apartment offers impressive views across the town and is available with no onward chain. Perfectly suited to first-time buyers, investors, or those seeking a low-maintenance home close to local amenities. The accommodation features one spacious double bedroom with built-in storage and a second single bedroom, ideal as a guest room, home office, or nursery. A recently updated three-piece bathroom includes an electric shower. The bright and airy living/dining area provides generous space for relaxing and entertaining, with an open archway leading into a well-equipped kitchen offering ample cupboard storage. Accessed via a communal entrance and internal staircase, the maisonette's layout provides a natural flow from the landing to all main rooms. Large windows throughout ensure plenty of natural light and enhance the apartment's sense of space. Externally, the property includes an allocated off-road parking space, a communal bike rack, and a shared drying area. Key Details:

EPC Rating: D Tenure: Leasehold Lease Term: 125 years from 1 January 1990 (approx. 89 years remaining)
Service Charge & Ground Rent: Approx. £800 per annum (payable to Richardson Chartered Surveyors)

Room Measurements:

Living/Dining Room: 4.19m x 3.1m (13'9" x 10'2")

Kitchen: 2.46m x 2.39m (8'1" x 7'10")

Bedroom One: 4.19m x 2.39m (13'9" x 7'10")

Bedroom Two: 2.06m x 2.08m (6'9" x 6'10")

Bathroom: 2.37m x 1.78m (7'9" x 5'10")

Don't miss the opportunity to own this well-positioned apartment with fantastic views and excellent access to the town centre.





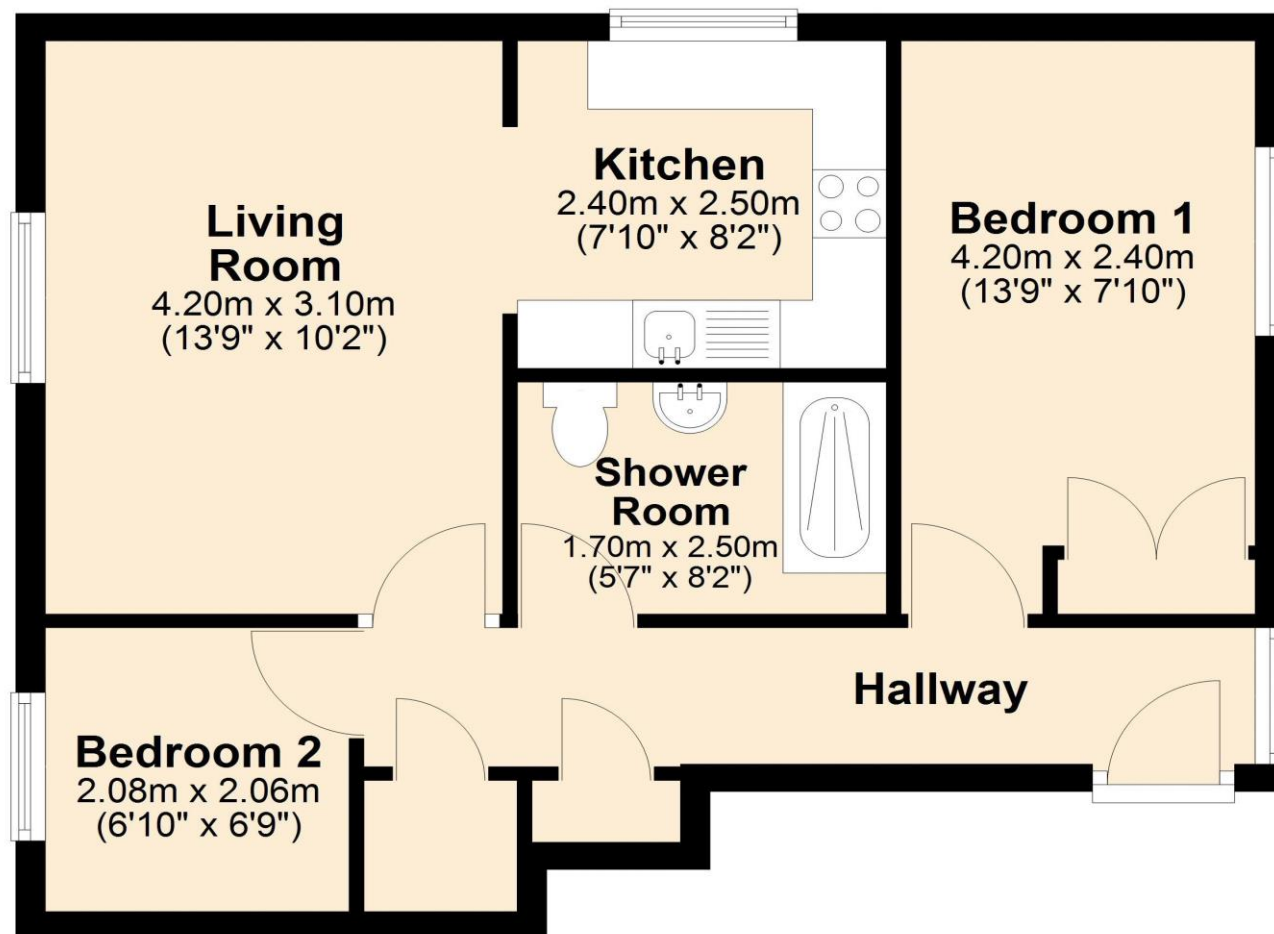


DISCLAIMER

Money Laundering Regulation: People who intend to purchase will be asked to show us documents to prove their identity. This will allow us to agree the sale and move forward with your purchase as quickly as possible. 2. We do our best to make sure our sales particulars are as accurate and reliable as we can. However, they are a general guide to the property and if something is particularly important to you, we will be happy to check information for you. As regards measurements, the approximate room sizes are intended as a general guide. You must verify dimensions of rooms yourself before ordering any carpets or furniture. 3. As regards services, we have not tested the services or any equipment including appliances in this property. We advise prospective buyers to carry out their own survey, service report before making their final offer to purchase. 4. This sales information has been issued in good faith. However, it does not constitute representation of fact or form part of any offer or contract. The information referred to in these particulars should be independently verified by any prospective buyer or tenant. Neither Nest Estates nor any of its employees has the authority to make or give any representation or warranty whatever in relation to this property.

Ground Floor

Approx. 47.5 sq. metres (511.8 sq. feet)



Total area: approx. 47.5 sq. metres (511.8 sq. feet)

nest

01780 238110
info@nestestates.co.uk
www.nestestates.co.uk