



BRITISH
PROPERTY
AWARDS

2018



GOLD WINNER

ESTATE AGENT
IN STAMFORD

nest
ESTATES



Nene Valley Business Park, Oundle

Peterborough, PE8 4HN

SUMMARY

- NEW BUSINESS HUB WITH EASY ACCESS TO OUNDLE & PETERBOROUGH
- OFFICES SPACES TO SUIT ALL BUSINESS SIZES FROM 1 - 100 PEOPLE
- LARGE ON SITE CAR PARK & CYCLE PARK - WALKING DISTANCE TO TOWN CENTRE
- CONTACT OUR OFFICE TO BOOK YOUR ONSITE TOUR TO SEE HOW IT COULD WORK FOR YOUR BUSINESS
- 25000+SQFT OF SPACE IN TOTAL
- SHORT OR LONG TERM'S AVAILABLE
- OFFICES FROM £500 PER MONTH ALL INCLUSIVE





****Luxury Office Spaces Near Oundle Town Centre – From £500/Month All-Inclusive****

Position your business in one of Oundle's most prestigious office buildings, just a short walk from the town centre. Designed to an exceptional standard, this professional workspace offers ****flexible office spaces to suit all team sizes**** – whether you're a solo entrepreneur or part of a growing company. Join a thriving business community — ****several well-known and respected companies already call this building home****, and we're now looking for more dynamic businesses to work alongside them.

Key features include:

****Office spaces for all team sizes****

****Prices from just £500/month****, inclusive of bills and service charges*

****On-site car parking and secure cycle storage****

****Modern meeting room available for functions and important meetings****

****Stylish communal areas**** for informal collaboration and breaks*

****24-hour security**** for total peace of mind*

****Flexible terms**** to accommodate your business needs

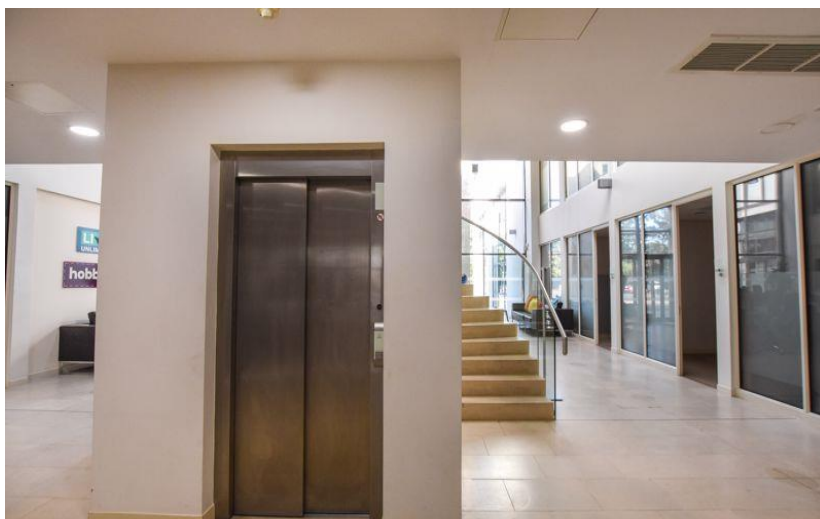
With its premium finish, excellent amenities, and strong community of established businesses, this is the perfect base for your next chapter.

****Enquire today to book a viewing and secure your space. ****

Business rates may apply, prices for space are plus VAT at standard rate

DISCLAIMER

Money Laundering Regulation: People who intend to purchase will be asked to show us documents to prove their identity. This will allow us to agree the sale and move forward with your purchase as quickly as possible. 2. We do our best to make sure our sales particulars are as accurate and reliable as we can. However, they are a general guide to the property and if something is particularly important to you, we will be happy to check information for you. As regards measurements, the approximate room sizes are intended as a general guide. You must verify dimensions of rooms yourself before ordering any carpets or furniture. 3. As regards services, we have not tested the services or any equipment including appliances in this property. We advise prospective buyers to carry out their own survey, service report before making their final offer to purchase. 4. This sales information has been issued in good faith. However, it does not constitute representation of fact or form part of any offer or contract. The information referred to in these particulars should be independently verified by any prospective buyer or tenant. Neither Nest Estates nor any of its employees has the authority to make or give any representation or warranty whatever in relation to this property.



nest
ESTATES

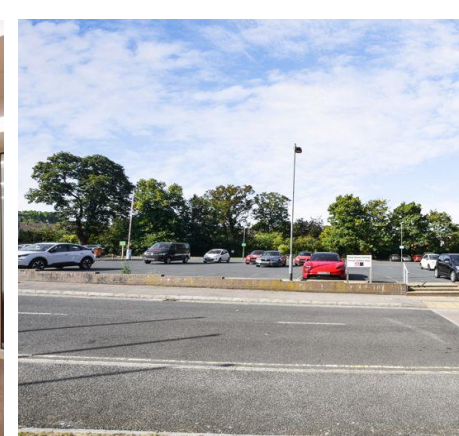


8-9 Red Lion Street Stamford Lincolnshire PE9 1PA

01780 238110

info@nestestates.co.uk

www.nestestates.co.uk



Here's who we think it will suit down to the ground, but we're open to hearing from all Businesses!

Professional Services * Accountants & Tax Advisors * Solicitors & Legal Consultants * Financial Advisors * Mortgage Brokers * Architects & Planning Consultants * Surveyors & Property Consultants * Insurance Brokers * HR & Recruitment Agencies * Business Consultants * IT Support & Managed Services Providers * Creative & Tech * Marketing & PR Agencies * Graphic & Web Designers * App & Software Developers * Content Creators & Copywriters * Branding Agencies * Videographers & Photography Studios (office-based operations) * Health & Wellness (Office-Based or Client-Facing) * Private Health Clinics (e.g., physio, osteo, mental health practitioners) * Nutritionists or Wellness Coaches * Aesthetics Clinics (non-invasive treatments – subject to building permissions) * Boutique Personal Trainers (consultation-based, not training on-site) * Yoga/Pilates Instructors (for admin/client management or small private sessions) * Training, Education & Coaching * Private Tutors or Education Consultants * Corporate Trainers or Leadership Coaches * Language Schools or Translation Services * Life or Business Coaches * Property & Lifestyle Service's * Estate Agents (satellite or premium offices) * Interior Designers * Lifestyle Management or Concierge Services * Event Planners or Wedding Planners * E-commerce & Retail HQs * Online Retail Brands (admin, logistics, or creative teams) * Product Designers or Import/Export Firms * Other Suitable Businesses * Virtual Office Providers * Charity or Not-for-Profit Admin Offices * Franchise Head Offices or Regional Hubs * Travel Agents or Bespoke Holiday Planners

CONTACT OUR OFFICE TO BOOK YOUR ONSITE TOUR TO SEE HOW IT COULD WORK FOR YOUR BUSINESS

nest
ESTATES

