



BRITISH
PROPERTY
AWARDS

2018



GOLD WINNER

ESTATE AGENT
IN STAMFORD

nest
ESTATES

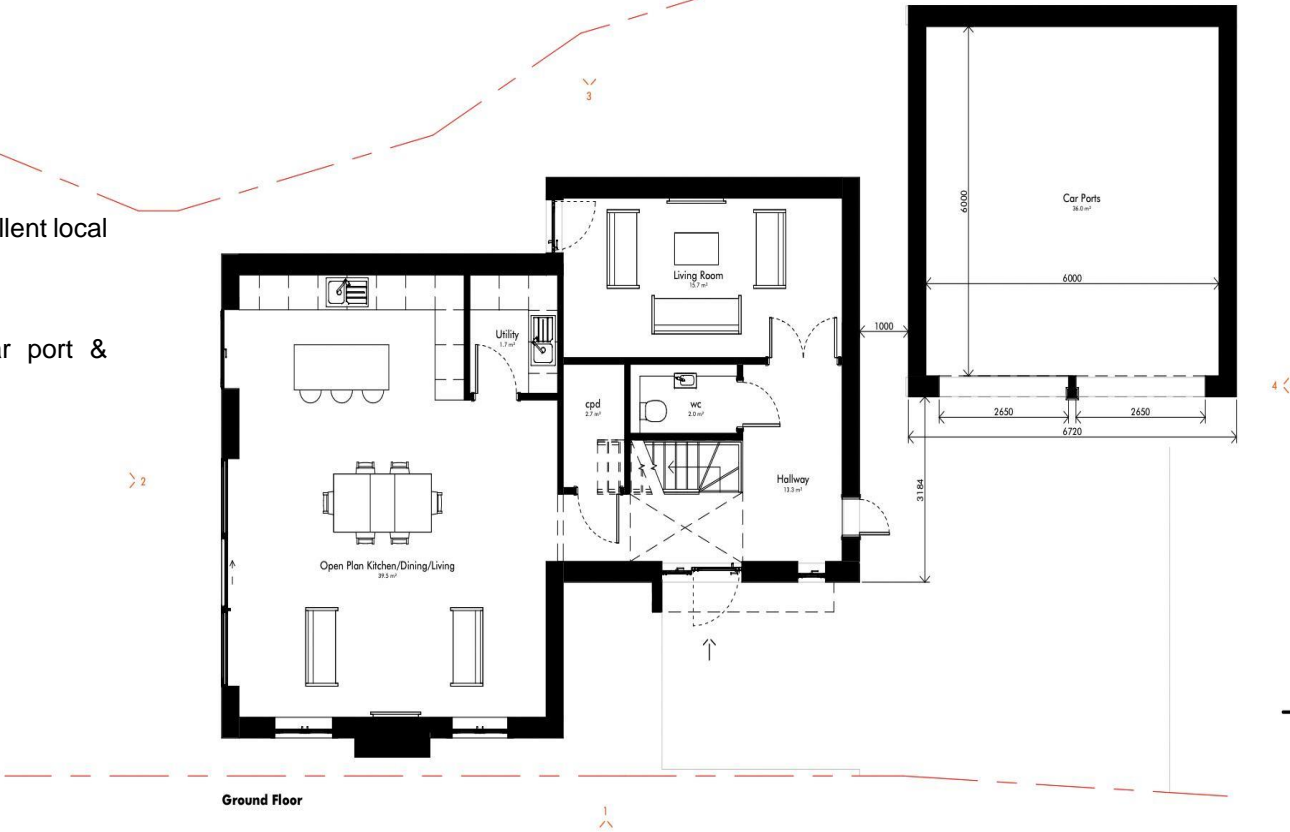
Station Road, Little Bytham

Grantham, NG33 4RA

£600,000

SUMMARY

- Four generously sized bedrooms
- Two luxurious en-suite bathrooms
- Versatile open-plan living space
- Desirable village location with excellent local amenities
- Off road parking and double car port & garden space
- High specification throughout



Area Schedule

Floor Level	Area (m ²)	Area (sq ft)
First Floor	85.2 m ²	917.04 ft ²
Ground Floor	126.0 m ²	1356.13 ft ²
	211.2 m ²	2273.17 ft ²

TMV Architects
The Repeater Station
London Road
Norman Cross
Peterborough PE7 3TB
info@tmvarchitects.co.uk
01733 794 795
tmvarchitects.co.uk

Note
Contractors must work only to figured dimensions which are to be checked on site, any discrepancies are to be reported to the architect before proceeding.

All rights described in chapter IV of the copyright, designs and patents act 1988 have been generally asserted.

Information contained within this drawing is the sole copyright of TMV Architects and should not be reproduced or imparted to a third party without written permission.

Scale Bar
0 1 2 3 4 5

Rev.	Date	Details
C	21.02.2023	Relocation of Car Port

Planning

Drawing Name Proposed Ground Floor Plan	Project No. 956	Dwg No. 003
Project Name Land Adjacent To Hill View	Rev. C	Scale 1 : 100 @ A3
	Drawn HK	Date 21.09.2022

Stunning 4-Bedroom Stone New Build in the Sought-After Village of Little Bytham We are delighted to present this new build which will be beautifully crafted into four-bedroom stone house , offering a perfect blend of traditional character and contemporary living. Situated in the popular and picturesque village of Little Bytham, this spacious family home has been thoughtfully designed and will be built to a high specification throughout. Key Features: Four generously sized bedrooms Two luxurious en-suite bathrooms Versatile open-plan living space, ideal for modern family life High-quality finishes and attention to detail throughout Desirable village location with excellent local amenities and countryside surroundings This is a rare opportunity to secure a high-specification home in a fantastic location. Early registration of interest is strongly recommended to avoid disappointment. For more information or to register your interest, please get in touch with us. We're happy to answer any questions you may have.

Tenure: Freehold

EPC Rating: Pending

Council Tax Band: Pending

Local Authority: SKDC

Services: TBC

DISCLAIMER

Money Laundering Regulation: People who intend to purchase will be asked to show us documents to prove their identity. This will allow us to agree the sale and move forward with your purchase as quickly as possible. 2. We do our best to make sure our sales particulars are as accurate and reliable as we can. However, they are a general guide to the property and if something is particularly important to you, we will be happy to check information for you. As regards measurements, the approximate room sizes are intended as a general guide. You must verify dimensions of rooms yourself before ordering any carpets or furniture. 3. As regards services, we have not tested the services or any equipment including appliances in this property. We advise prospective buyers to carry out their own survey, service report before making their final offer to purchase. 4. This sales information has been issued in good faith. However, it does not constitute representation of fact or form part of any offer or contract. The information referred to in these particulars should be independently verified by any prospective buyer or tenant. Neither Nest Estates nor any of its employees has the authority to make or give any representation or warranty whatever in relation to this property.

