



BRITISH
PROPERTY
AWARDS

2018



GOLD WINNER

ESTATE AGENT
IN STAMFORD

nest
ESTATES



King Edwards Way, Edith Weston

Oakham, LE15 8EZ

£575,000

SUMMARY

- Newly Renovated & Remodelled
- Enviably Location in Popular Village
- Four Double Bedrooms
- Main Bedroom with En-suite
- Open Plan Living Kitchen Diner
- Garage - Parking - Gardens
- Downstairs WC - Utility Space
- Separate living space with Log Burner





*****RUTLAND WATER VILLAGE***RENOVATED & REMODELLED*****An attractive four bedroom detached property with garage and low maintenance gardens situated in a highly sought after Rutland Water village and enjoying delightful views over grass paddocks to the rear. The accommodation briefly comprises; entrance into open plan living space with high specification finish, Living room with log burner, utility space, wc, oversized (plastered) garage. The first floor offers four double bedrooms, including a main bedroom with built in wardrobes and ensuite, and a separate family bathroom. Outside the property benefits from a open outlook, low maintenance garden and off road parking for multiple cars. An early viewing is essential to appreciate the space, standard and location on offer. (Agent notes: the pool is not included in the sale)





Tenure: Freehold

EPC Rating: E

Council Tax Band: E

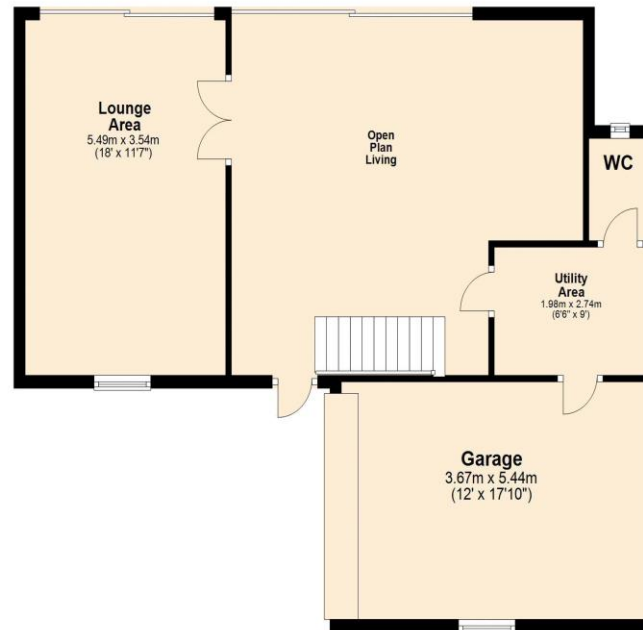
Local Authority: Rutland County Council

Services: Oil Fired Central Heating

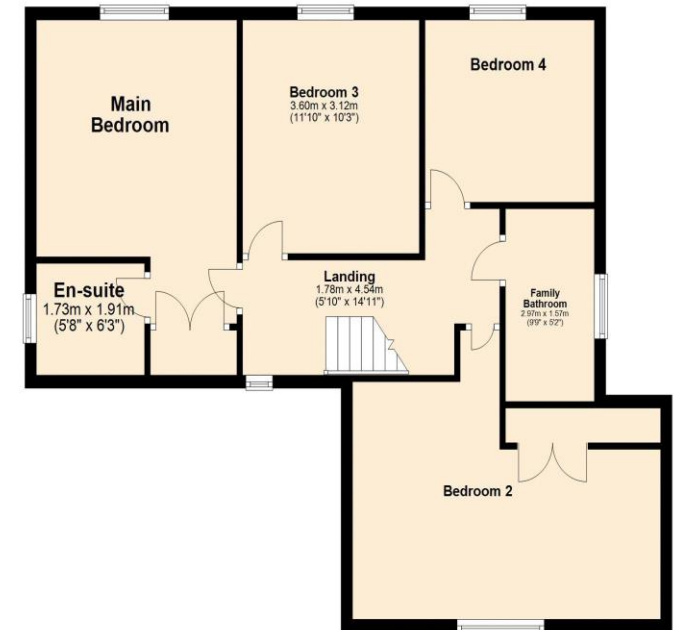
DISCLAIMER

Money Laundering Regulation: People who intend to purchase will be asked to show us documents to prove their identity. This will allow us to agree the sale and move forward with your purchase as quickly as possible. 2. We do our best to make sure our sales particulars are as accurate and reliable as we can. However, they are a general guide to the property and if something is particularly important to you, we will be happy to check information for you. As regards measurements, the approximate room sizes are intended as a general guide. You must verify dimensions of rooms yourself before ordering any carpets or furniture. 3. As regards services, we have not tested the services or any equipment including appliances in this property. We advise prospective buyers to carry out their own survey, service report before making their final offer to purchase. 4. This sales information has been issued in good faith. However, it does not constitute representation of fact or form part of any offer or contract. The information referred to in these particulars should be independently verified by any prospective buyer or tenant. Neither Nest Estates nor any of its employees has the authority to make or give any representation or warranty whatever in relation to this property.

Ground Floor
Approx. 80.5 sq. metres (866.5 sq. feet)



First Floor
Approx. 73.1 sq. metres (786.5 sq. feet)



Total area: approx. 153.6 sq. metres (1653.1 sq. feet)