



BRITISH
PROPERTY
AWARDS

2018



GOLD WINNER

ESTATE AGENT
IN STAMFORD

nest
ESTATES



Exeter Gardens,

Stamford, PE9 2RN

£875,000

SUMMARY

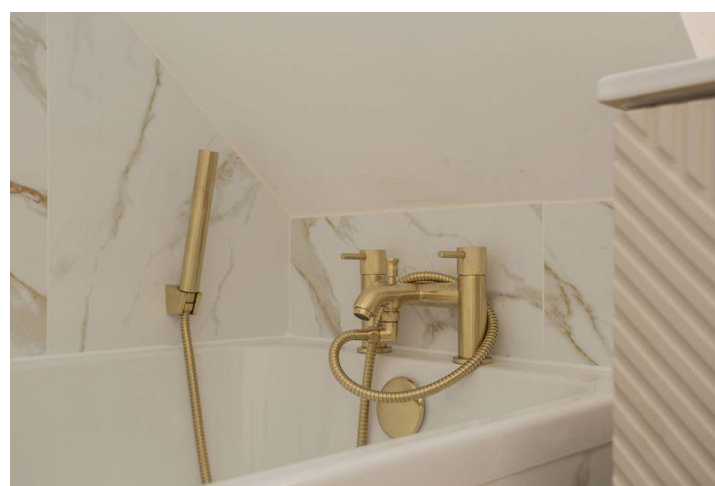
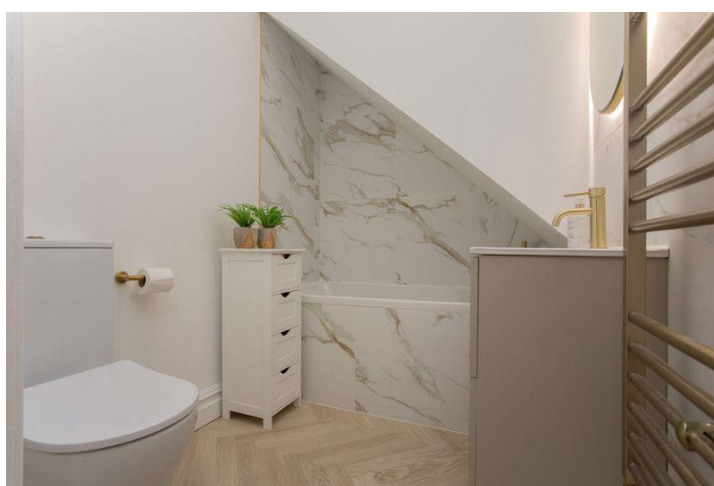
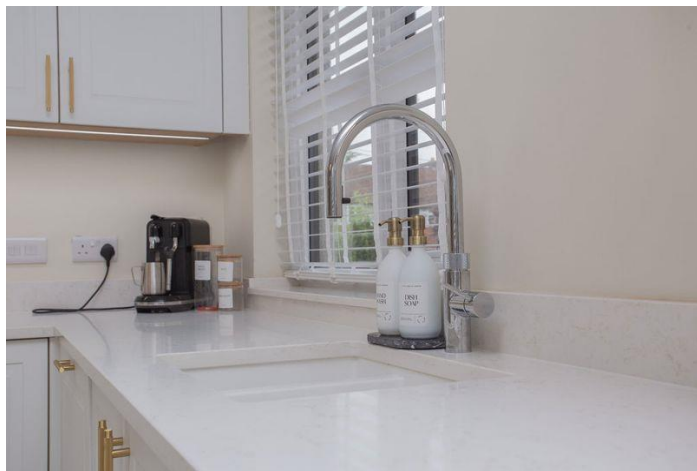
- NEWLY RENOVATED INSIDE & OUT
- Three/Four Bedroom Detached Chalet Bungalow
- Enviaible Location & Plot Close to Stamford Town Centre
- Three Reception areas Including an Impressive open plan area
- New Front Drive and Rear Patio to be Installed prior to completion
- Off road parking for at-least 6 cars & a generous garage
- EPC C Council Tax F

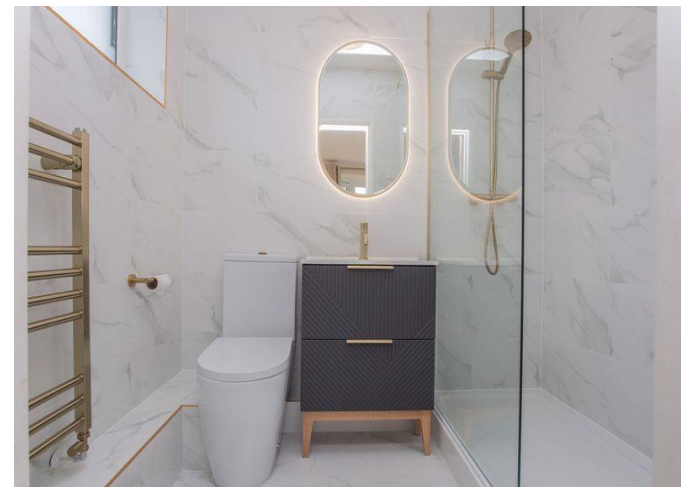




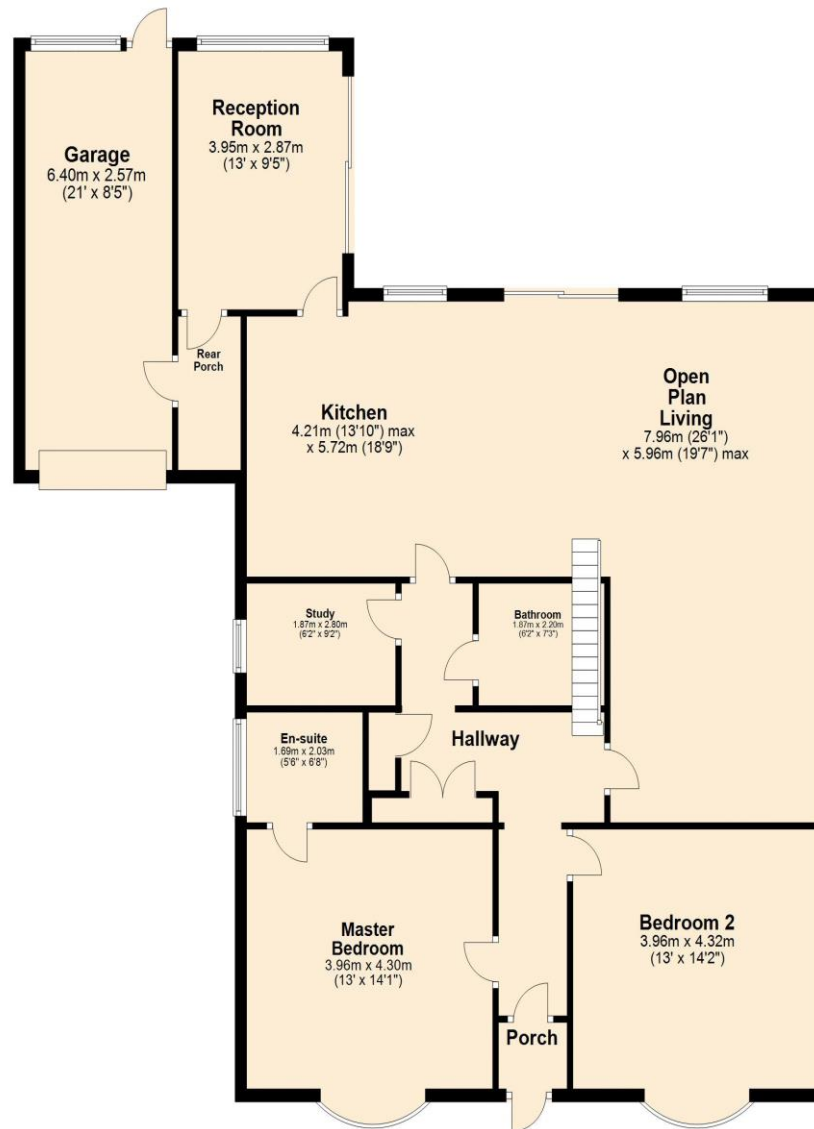
*****3/4bedroom Chalet Bungalow***Newly RENOVATED & REFURBISHED Throughout***Enviably location in the market town of Stamford, an early viewing is essential to appreciate the space, standard and location on offer**Far reaching views** The accommodation briefly comprises; entrance hall, open plan living space with feature panelling and media wall, open plan to the kitchen with modern island and integrated appliances, separate study, and further well proportioned reception room overlooking the mature garden. Downstairs also offers two further double bedrooms, including a main bedroom with en-suite, and a family bathroom. the first floor offers a generous double bedroom with eaves storage and a separate storage/sewing room. Outside the property benefits from a new driveway for at-least 6 cars (currently under construction) a generous garage and mature private rear garden (currently awaiting a new patio to be installed) Contact our office to register your interest.**





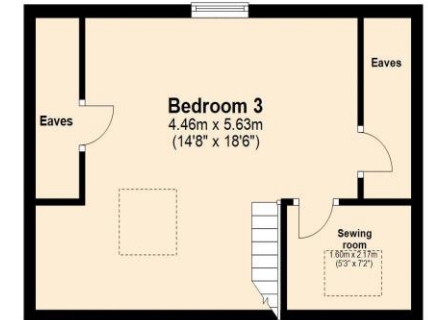


Ground Floor
Approx. 158.8 sq. metres (1709.0 sq. feet)



Total area: approx. 185.8 sq. metres (2000.2 sq. feet)

First Floor
Approx. 27.1 sq. metres (291.3 sq. feet)



Tenure: Freehold

EPC Rating: C

Council Tax Band: F

Local Authority: SKDC

Services: Mains Electric-Gas -Water

DISCLAIMER

Money Laundering Regulation: People who intend to purchase will be asked to show us documents to prove their identity. This will allow us to agree the sale and move forward with your purchase as quickly as possible. 2. We do our best to make sure our sales particulars are as accurate and reliable as we can. However, they are a general guide to the property and if something is particularly important to you, we will be happy to check information for you. As regards measurements, the approximate room sizes are intended as a general guide. You must verify dimensions of rooms yourself before ordering any carpets or furniture. 3. As regards services, we have not tested the services or any equipment including appliances in this property. We advise prospective buyers to carry out their own survey, service report before making their final offer to purchase. 4. This sales information has been issued in good faith. However, it does not constitute representation of fact or form part of any offer or contract. The information referred to in these particulars should be independently verified by any prospective buyer or tenant. Neither Nest Estates nor any of its employees has the authority to make or give any representation or warranty whatever in relation to this property.