



BRITISH
PROPERTY
AWARDS

2018
★ ★ ★ ★ ★

GOLD WINNER

ESTATE AGENT
IN STAMFORD

nest
ESTATES



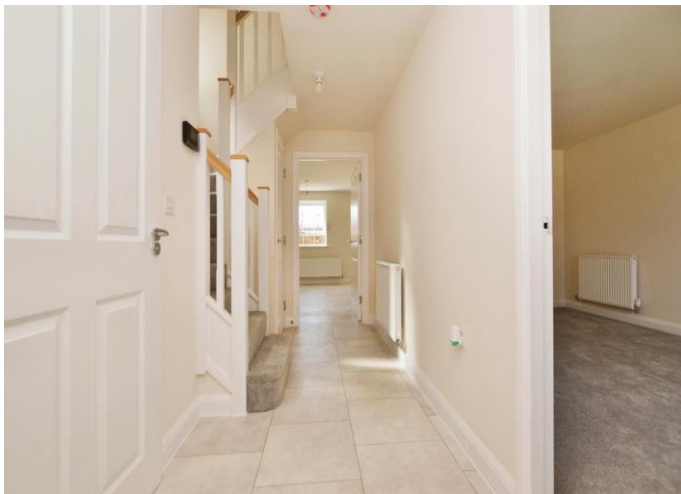
Bourne Road, Corby Glen

Grantham, NG33 4NS

£319,995

SUMMARY

- South Facing Rear Garden
- Garage & Off Road Parking
- Four Bedroom Detached Family Home
- Living Room
- Downstairs Wc, En Suite & Family Bathroom
- Open Plan Kitchen Dining Room
- Ready To Move In
- Amenities Near By





*** READY TO MOVE IN ***

*** SOUTH FACING REAR GARDEN***

*** GARAGE & OFF ROAD PARKING ***

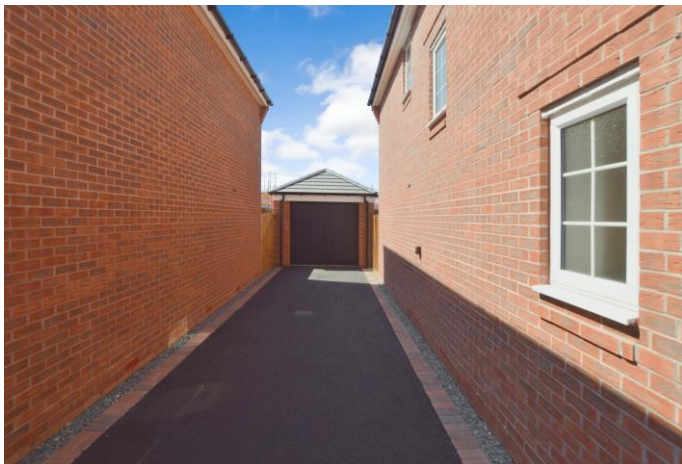
*** INCENTIVES AVAILABLE ***

The Ingleby is a 4 bedroom detached family home offering spacious accommodation over the ground and first floor. The property comprises; Entrance Hall, Downstairs WC, Living Room, Open Plan Kitchen Dining Room, Four well proportioned bedrooms, En Suite to master, Family Bathroom, Garage, Off Road Parking and South Facing Rear Garden!!

AGENTS NOTES: This property is fitted with the upgraded kitchen package.

Location...

Corby Glen is a village in the South Kesteven district of Lincolnshire, situated between two market towns; approximately 9 miles south-east of Grantham and 8 north-west of Bourne, along the A151. Excellent road links are provided by the A1 located less than 5 miles away, whilst nearby Grantham has a main line train link into London Kings Cross with a publicised journey time of 1 hour; ideal for the commuter. There's also bus links to Bourne, Grantham and Stamford. The village has two public houses, a church, there's a small Co-op supermarket with extended opening hours, two doctors surgeries, a post office, car garage and a delicatessen tea room. Education is well catered for, with a community primary school and the Charles Read Academy providing secondary education.



Tenure: Freehold

EPC Rating: B

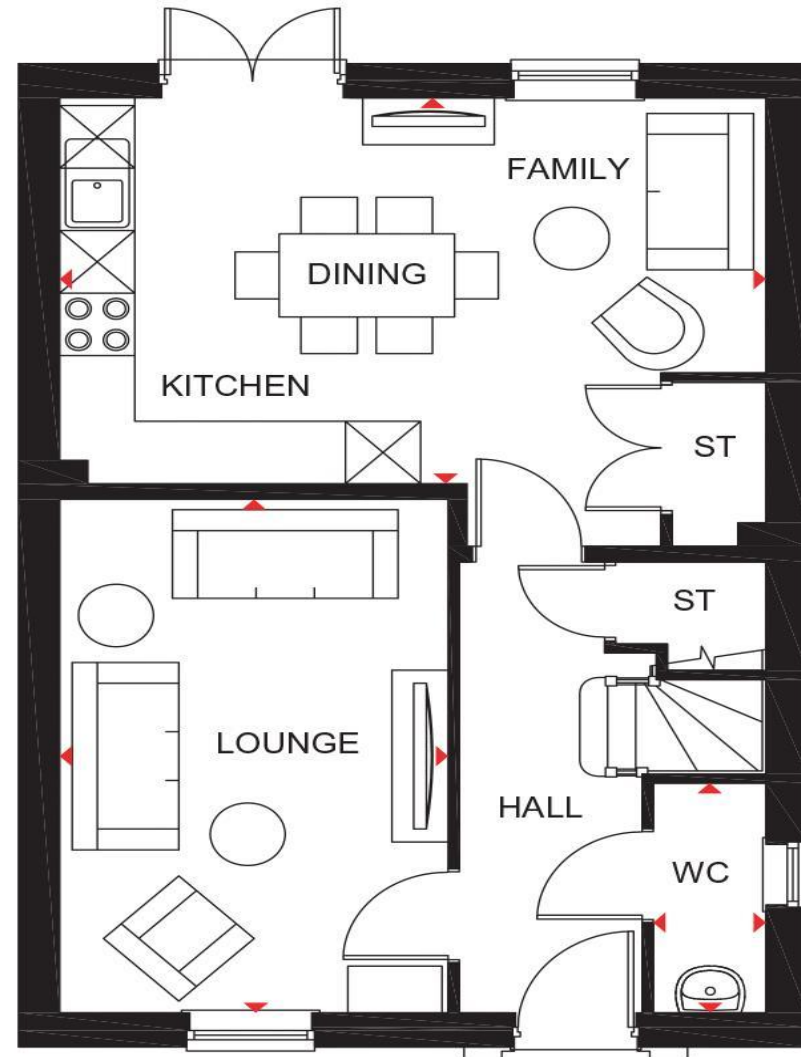
Council Tax Band: TBC

Local Authority: SKDC

Services: Air Source Heat Pump

DISCLAIMER

Money Laundering Regulation: People who intend to purchase will be asked to show us documents to prove their identity. This will allow us to agree the sale and move forward with your purchase as quickly as possible. 2. We do our best to make sure our sales particulars are as accurate and reliable as we can. However, they are a general guide to the property and if something is particularly important to you, we will be happy to check information for you. As regards measurements, the approximate room sizes are intended as a general guide. You must verify dimensions of rooms yourself before ordering any carpets or furniture. 3. As regards services, we have not tested the services or any equipment including appliances in this property. We advise prospective buyers to carry out their own survey, service report before making their final offer to purchase. 4. This sales information has been issued in good faith. However, it does not constitute representation of fact or form part of any offer or contract. The information referred to in these particulars should be independently verified by any prospective buyer or tenant. Neither Nest Estates nor any of its employees has the authority to make or give any representation or warranty whatever in relation to this property.



nest
ESTATES

8-9 Red Lion Street Stamford Lincolnshire PE9 1PA

01780 238110

info@nestestates.co.uk

www.nestestates.co.uk