



BRITISH
PROPERTY
AWARDS

2018



GOLD WINNER

ESTATE AGENT
IN STAMFORD

nest
ESTATES



Stainby Road, Colsterworth

Grantham, NG33 5JB

£649,000

SUMMARY

- 0.85 Acre Plot
- Four Bedroom Detached Family Home
- Garage & Off Road Parking
- Riverside Views
- Characterful Land
- Shower Room & Family Bathroom
- Living Room & Conservatory
- Kitchen & Utility





*** NO CHAIN ***

*** 0.85 ACRE PLOT ***

Meadowbank is a four bedroom detached family home, offering 1900 Sq Ft (approx) of spacious accommodation. The property comprises; Entrance hall, living room with log burner, conservatory, kitchen, utility, shower room, family bathroom, four well proportioned bedrooms, oversized garage, store and beautiful tree lined garden space with river views.

AGENTS NOTES: The property benefits from 22 black solar panels owned by the property. This creates a much cheaper energy bill. There is an immersion transfer, so that if the property creates too much energy, it then goes to heating the water. There is a battery to store electric, located in the loft space.



Location: Colsterworth is ideally situated for easy access to the A1 and the surrounding towns of Melton Mowbray, Stamford, Bourne, Oakham and Grantham, with the mainline train station located at Grantham, with a commuting time of approximately 65 minutes into London Kings Cross. The village is served well with a post office, surgery, convenience store and hairdresser, with greengrocer, butcher and fishmonger mobile shop services. Other facilities in the village include a sports and social club, a village hall, a youth centre/nursery and children's play facilities.

Tenure: **Freehold**

EPC Rating: **TBC**

Council Tax Band: **E**

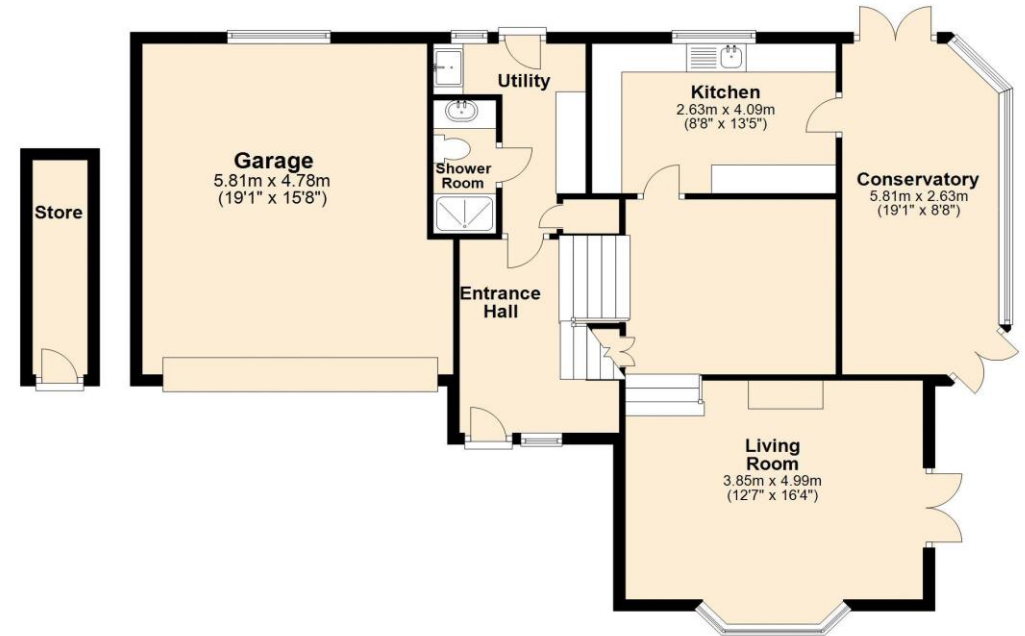
Local Authority: **South Kesteven District Council**

Services: **Oil Fired Central Heating**

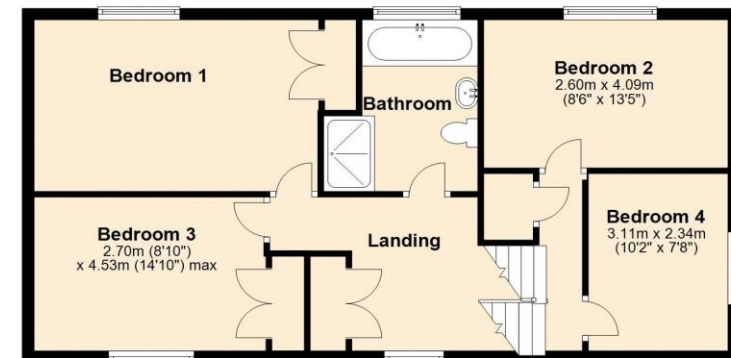
DISCLAIMER

Money Laundering Regulation: People who intend to purchase will be asked to show us documents to prove their identity. This will allow us to agree the sale and move forward with your purchase as quickly as possible. 2. We do our best to make sure our sales particulars are as accurate and reliable as we can. However, they are a general guide to the property and if something is particularly important to you, we will be happy to check information for you. As regards measurements, the approximate room sizes are intended as a general guide. You must verify dimensions of rooms yourself before ordering any carpets or furniture. 3. As regards services, we have not tested the services or any equipment including appliances in this property. We advise prospective buyers to carry out their own survey, service report before making their final offer to purchase. 4. This sales information has been issued in good faith. However, it does not constitute representation of fact or form part of any offer or contract. The information referred to in these particulars should be independently verified by any prospective buyer or tenant. Neither Nest Estates nor any of its employees has the authority to make or give any representation or warranty whatever in relation to this property.

Ground Floor
Approx. 109.0 sq. metres (1173.6 sq. feet)



First Floor
Approx. 67.6 sq. metres (727.3 sq. feet)



Total area: approx. 176.6 sq. metres (1900.9 sq. feet)

nest
ESTATES

8-9 Red Lion Street Stamford Lincolnshire PE9 1PA

01780 238110

info@nestestates.co.uk

www.nestestates.co.uk