



BRITISH  
PROPERTY  
AWARDS

2018



GOLD WINNER

ESTATE AGENT  
IN STAMFORD

nest  
ESTATES



, Deenethorpe

Corby, NN17 3EP

£750,000



# SUMMARY

- Extended Four Bedroom Detached Family Home
- Stunning Field Views
- Living Room & Dining Room
- Kitchen Breakfast Room & Utility Room
- Garden Room, Office & Study
- Downstairs WC, Family Bathroom & Two En Suites
- Double Garage & Numerous Off Road Parking Spaces
- Summer House With Electricity





\*\*\* STUNNING FIELD VIEWS \*\*\*

\*\*\* EXTENDED \*\*\*

This extended four bedroom detached stone built home, offers 2687 Sq Ft of spacious accommodation and fantastic field views.

The property comprises; Entrance hall, living room with log burner, downstairs WC, dining room, office with air conditioning, a recently fitted kitchen breakfast room with integrated appliances, garden room with air conditioning and underfloor heating, study, utility room, family bathroom, four well proportioned bedrooms, two with en suites and built in wardrobes, the master bedroom also has air conditioning, a double garage, numerous off road parking spaces, patio courtyard area and lawned garden with field views.







Tenure: **Freehold**

EPC Rating: **D**

Council Tax Band: **G**

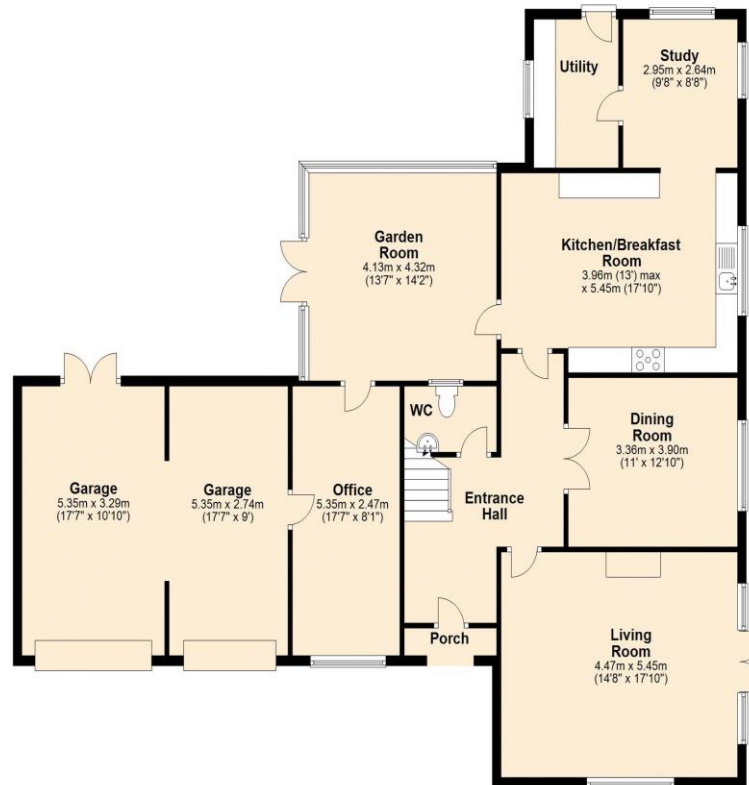
Local Authority: **East Northants**

Services: **Oil Fired Central Heating**

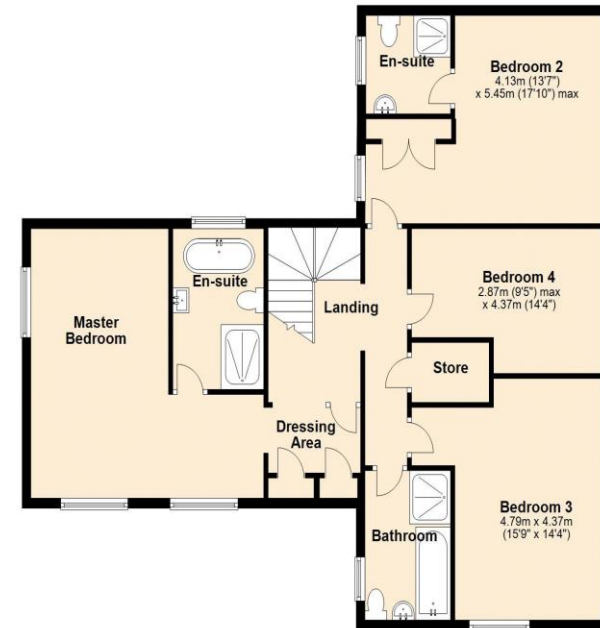
## DISCLAIMER

Money Laundering Regulation: People who intend to purchase will be asked to show us documents to prove their identity. This will allow us to agree the sale and move forward with your purchase as quickly as possible. 2. We do our best to make sure our sales particulars are as accurate and reliable as we can. However, they are a general guide to the property and if something is particularly important to you, we will be happy to check information for you. As regards measurements, the approximate room sizes are intended as a general guide. You must verify dimensions of rooms yourself before ordering any carpets or furniture. 3. As regards services, we have not tested the services or any equipment including appliances in this property. We advise prospective buyers to carry out their own survey, service report before making their final offer to purchase. 4. This sales information has been issued in good faith. However, it does not constitute representation of fact or form part of any offer or contract. The information referred to in these particulars should be independently verified by any prospective buyer or tenant. Neither Nest Estates nor any of its employees has the authority to make or give any representation or warranty whatever in relation to this property.

**Ground Floor**  
Approx. 161.0 sq. metres (1732.9 sq. feet)



**First Floor**  
Approx. 88.6 sq. metres (954.1 sq. feet)



Total area: approx. 249.6 sq. metres (2687.1 sq. feet)