



BRITISH
PROPERTY
AWARDS

2018



GOLD WINNER

ESTATE AGENT
IN STAMFORD

nest
ESTATES



, Deenethorpe

Corby, NN17 3EP

£335,000

SUMMARY

- Idyllic Village Location
- Beautifully Presented Three Double Bedroom Semi Detached Home
- Garage & Off Road Parking
- Downstairs WC, Family Bathroom & En Suite To Master
- Kitchen Breakfast Room
- Living Room & Dining Room
- Front & Rear Garden
- Landscaped Rear Garden With Extensive Patio Area





*** NO ONWARD CHAIN *** GARAGE & TWO OFF ROAD PARKING SPACES ***

Beautifully presented three double bedroom home, briefly comprising; Entrance Hall with storage cupboard, Kitchen Breakfast Room, Living Room with open fire place, Dining Room, Downstairs WC, Three Double Bedrooms, En Suite to master bedroom, Family Bathroom, Front Garden, Landscaped Rear Garden with extensive patio area, Garage & Two Off Road Parking Spaces. Set within the idyllic village location of Deenethorpe.



Tenure: Freehold

EPC Rating: TBC

Council Tax Band: TBC

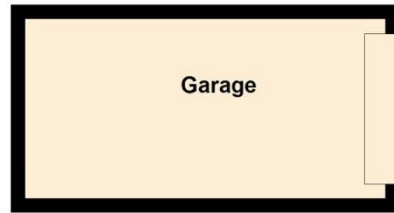
Local Authority: East Northamptonshire Council

Services: Oil Fired Central Heating

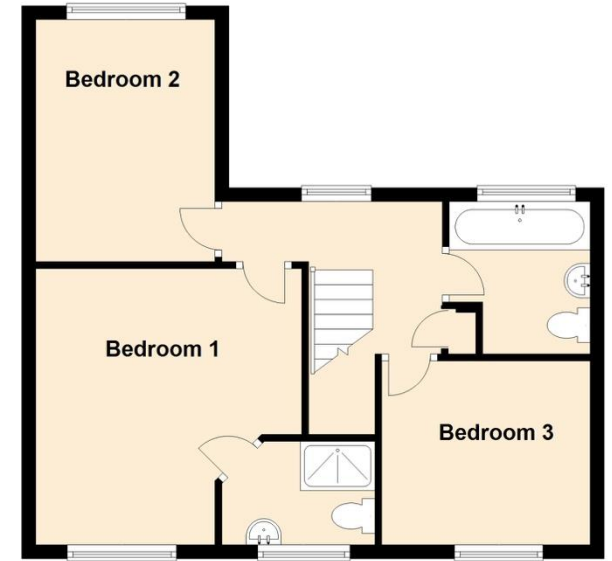
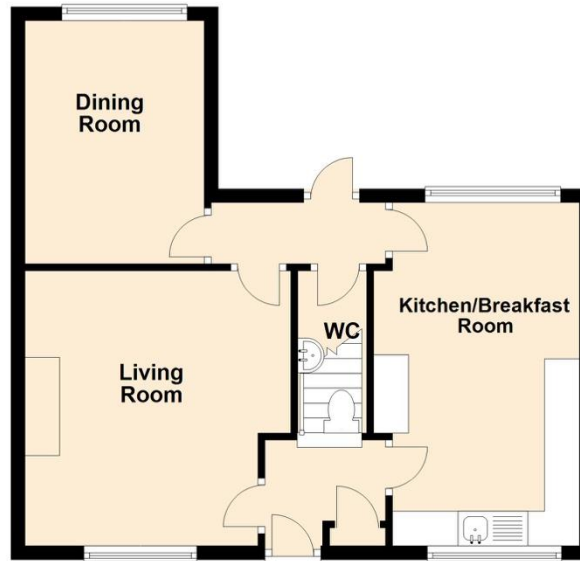
DISCLAIMER

Money Laundering Regulation: People who intend to purchase will be asked to show us documents to prove their identity. This will allow us to agree the sale and move forward with your purchase as quickly as possible. 2. We do our best to make sure our sales particulars are as accurate and reliable as we can. However, they are a general guide to the property and if something is particularly important to you, we will be happy to check information for you. As regards measurements, the approximate room sizes are intended as a general guide. You must verify dimensions of rooms yourself before ordering any carpets or furniture. 3. As regards services, we have not tested the services or any equipment including appliances in this property. We advise prospective buyers to carry out their own survey, service report before making their final offer to purchase. 4. This sales information has been issued in good faith. However, it does not constitute representation of fact or form part of any offer or contract. The information referred to in these particulars should be independently verified by any prospective buyer or tenant. Neither Nest Estates nor any of its employees has the authority to make or give any representation or warranty whatever in relation to this property.

Ground Floor
Approx. 59.6 sq. metres (641.1 sq. feet)



First Floor
Approx. 46.1 sq. metres (496.7 sq. feet)



Total area: approx. 105.7 sq. metres (1137.8 sq. feet)

nest
ESTATES

8-9 Red Lion Street Stamford Lincolnshire PE9 1PA

01780 238110

info@nestestates.co.uk

www.nestestates.co.uk