



4 Queensway, Redhill, RH1 1TY
Starting Bid £200,000

**** INVESTORS **** Being Sold via Secure Sale online bidding. Terms & Conditions apply. Starting Bid £200,000

A two bedroom 4th floor purpose built apartment situated in the heart of Redhill town centre with a good choice of shops, restaurants and amenities and mainline line station offering good commuter links to London, Gatwick and the South coast. The M25 can be accessed at the Reigate Junction 8.
Lease remaining 138 Years - Annual Service Charge - £2000 approx - Annual Ground Rent - £300

LEASE:

Lease remaining 138 Years

Annual Service Charge - £2000 approx

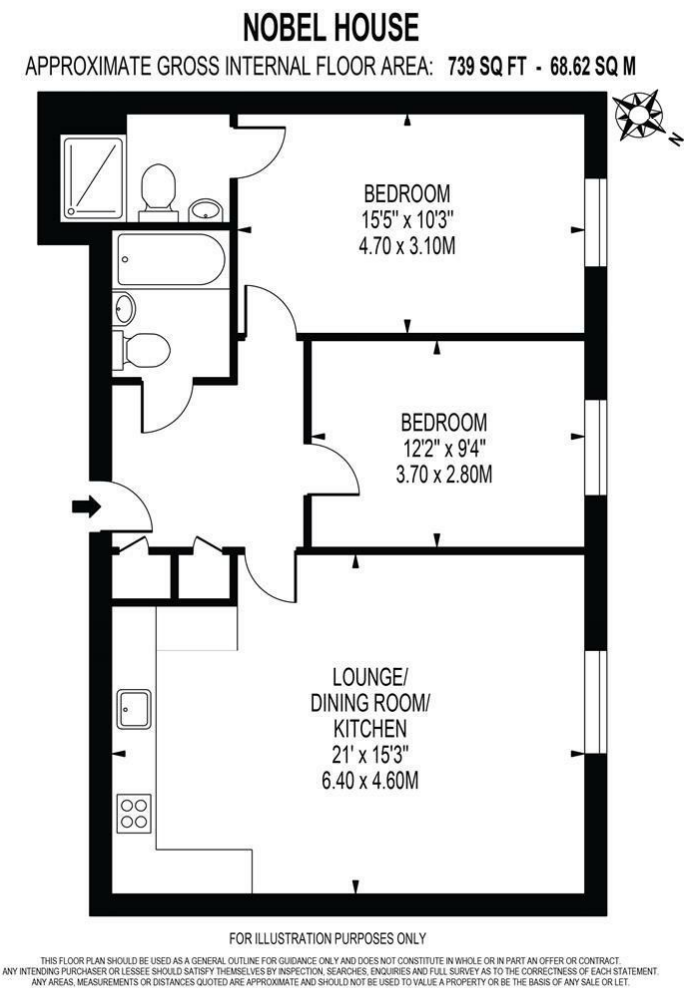
Annual Ground Rent - £300

FEATURES:

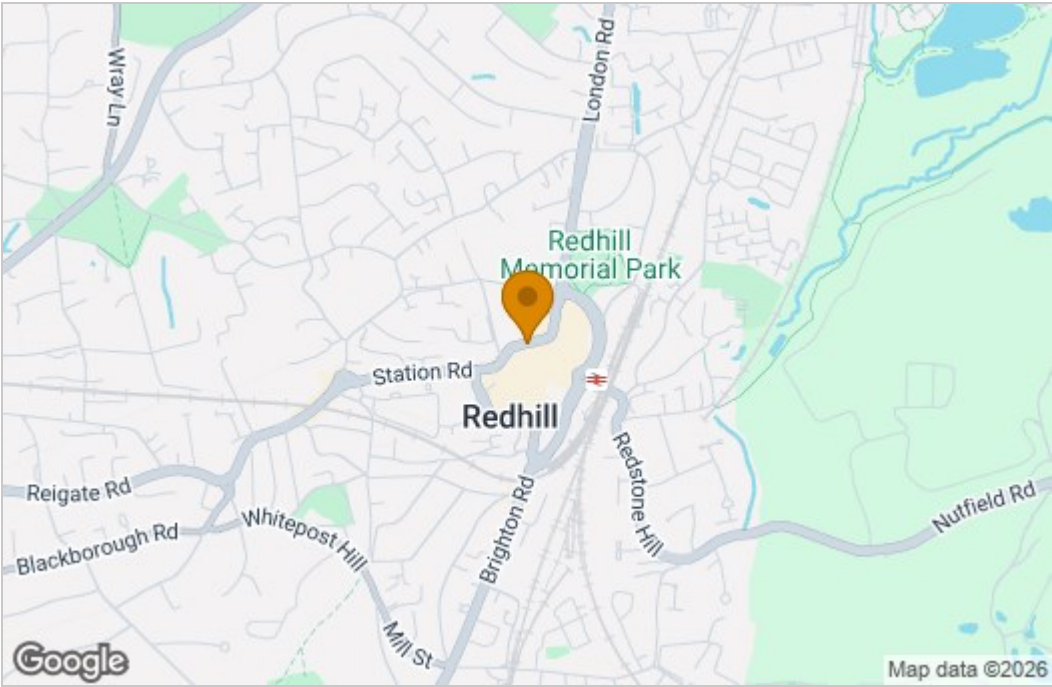
- Being Sold via Secure Sale Online Bidding T&C's Apply
- Two Bedroom Apartment
- En-suite to Main Bedroom
- Currently Tenanted Achieving £1500 PCM
- Roof Garden Located at First Floor Level for all Residents to Make use of
- Located in the Heart of the Town Centre with the Train Station a Short Walk Away

COUNCIL TAX BAND C

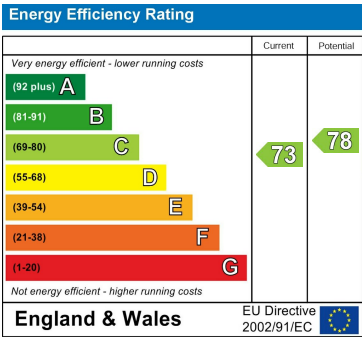
Floor Plan



Area Map



Energy Efficiency Graph



These particulars, whilst believed to be accurate are set out as a general outline only for guidance and do not constitute any part of an offer or contract. Intending purchasers should not rely on them as statements of representation of fact, but must satisfy themselves by inspection or otherwise as to their accuracy. No person in this firm's employment has the authority to make or give any representation or warranty in respect of the property.