



15 Albury Place

Albury Road, Merstham, RH1 3LP

£1,150



A one bedroom semi detached bungalow offered to the market with conservatory, sitting room, kitchen, bedroom, shower room, gardens and allocated parking and being within walking distance to Merstham amenities, shops and mainline railway station which offers good commuter links to London, Gatwick and the South coast. Bus routes serve Redhill town centre which offers more comprehensive facilities including a good choice of shops, bars and restaurants and the M23/25 can be accessed at the Horley Interchange, Junction 7.

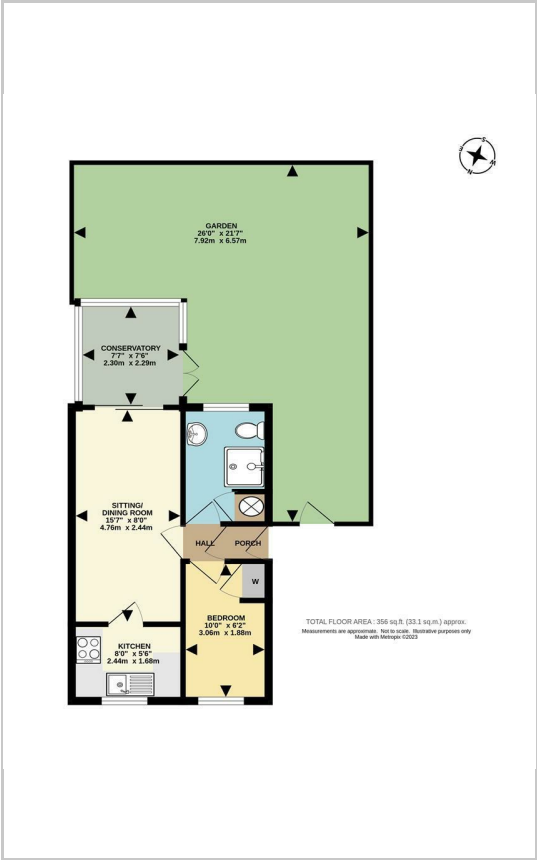


COUNCIL TAX BAND C

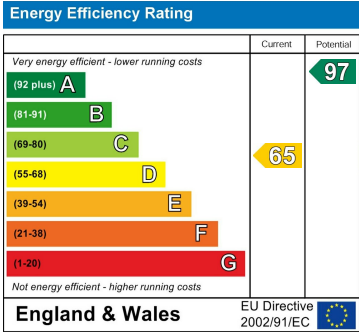
Area Map



Floor Plans



Energy Efficiency Graph



These particulars, whilst believed to be accurate are set out as a general outline only for guidance and do not constitute any part of an offer or contract. Intending purchasers should not rely on them as statements of representation of fact, but must satisfy themselves by inspection or otherwise as to their accuracy. No person in this firms employment has the authority to make or give any representation or warranty in respect of the property.