



## 98 Priory Park Road

North Maida Vale, London, NW6 7UU

**Starting Bid £980,000**



\*For sale via secure sale online bidding: terms and conditions apply.\*

A superb Freehold Residential renovation opportunity. Currently an HMO with 8 bedrooms all with ensuite shower rooms, the property can be offered with vacant possession.

Photographs have been virtually staged, and the current status of rooms can be viewed on the video or 360 virtual tour. Early viewing of this fabulous opportunity is strongly advised.



DESCRIPTION

The property comprises a mid terrace house over ground and three upper floors internally arranged to provide eight self-contained studio flats with a total combined GIA of approximately 1,727 sq ft.

TENURE

Freehold

LOCATION

The property is situated on a residential road close to local shops and amenities. The open spaces of Kilburn Grange Park are within easy reach. Transport links are provided by Kilburn underground station (Jubilee line) and Kilburn High Road rail station.

TENANCY

At present, the eight bedrooms are currently leased to a housing association at a rent of £115,200 per annum.

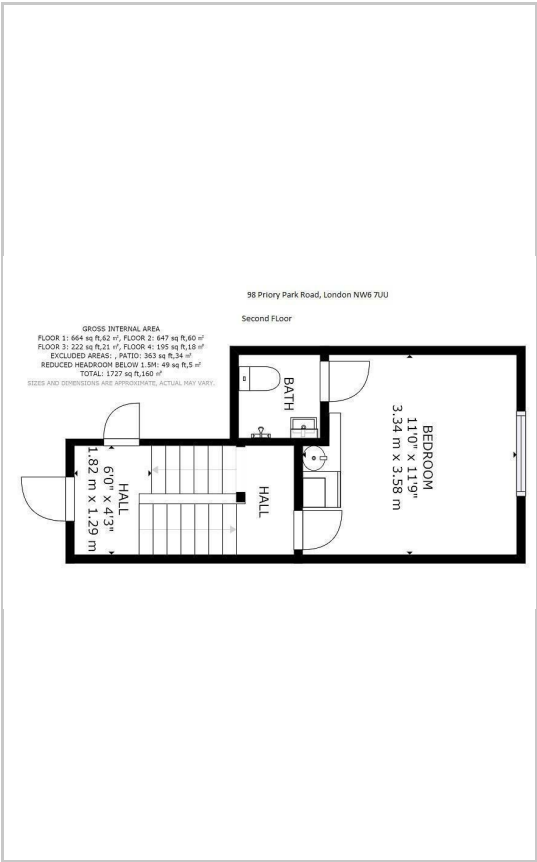
ACCOMMODATION

- Ground Floor: 3 x rooms with en-suites, kitchen
- First Floor: 3 rooms with en-suites, kitchen
- Second Floor: Room with en-suite
- Third Floor: Room with en-suite

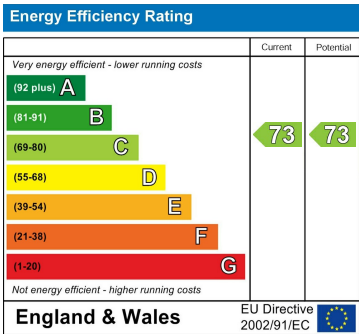
Area Map



Floor Plans



Energy Efficiency Graph



These particulars, whilst believed to be accurate are set out as a general outline only for guidance and do not constitute any part of an offer or contract. Intending purchasers should not rely on them as statements of representation of fact, but must satisfy themselves by inspection or otherwise as to their accuracy. No person in this firms employment has the authority to make or give any representation or warranty in respect of the property.