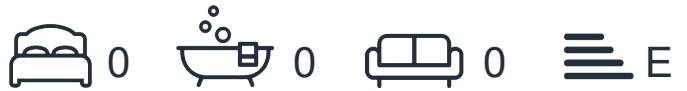




## 219 Kilburn High Road

, London, NW6 7JG

Asking Price £650,000

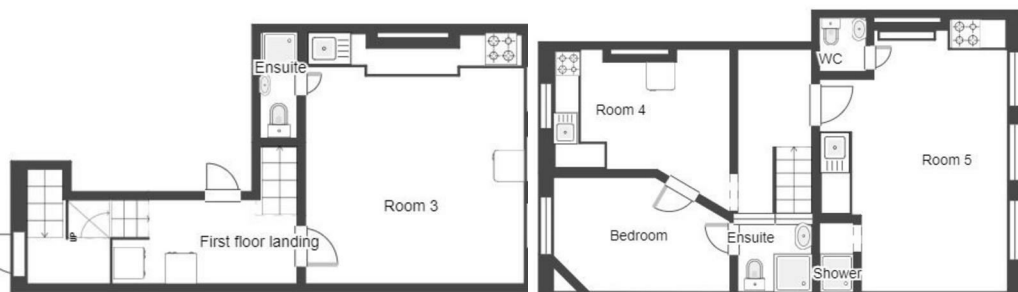


\*For sale via secure sale online bidding: terms and conditions apply.\*  
VIEWING OPEN HOUSE THURSDAY 4th JULY 1PM - 1.50PM

A Residential Investment Comprising three Self-Contained Studio Flats. When Fully Let on Nightly Rents the Total Combined Income is £87,000 Per Annum.

The property comprises five self-contained studio flats arranged over first and second floors with a total GIA of approximately 1,264 sq ft. The flats have their own rear entrance.

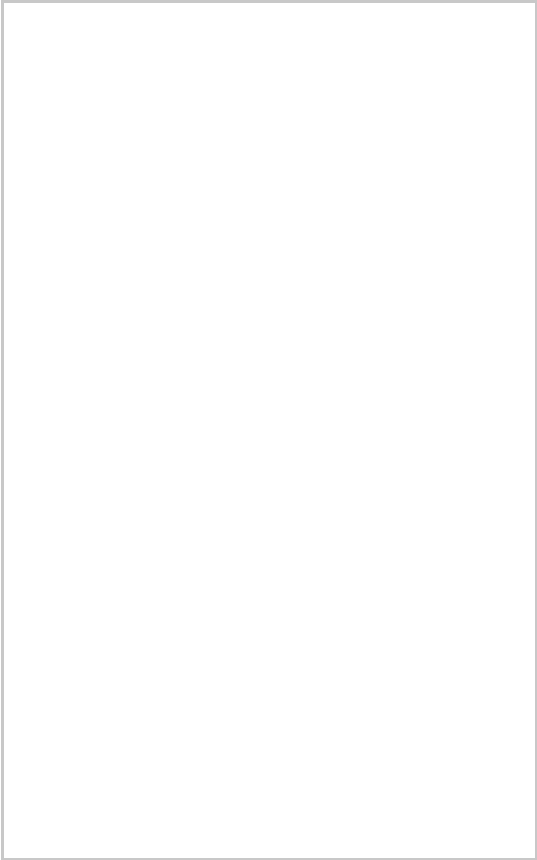
The property is held on a 99 year lease from 29th September 1992 (approximately 68 years unexpired). At the buyer's request and costs a section 42 notice to extend the lease will be served prior to completion, the rights of which would be assigned to the incoming buyer.



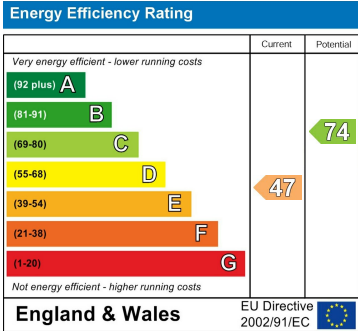
### Area Map



### Floor Plans



### Energy Efficiency Graph



These particulars, whilst believed to be accurate are set out as a general outline only for guidance and do not constitute any part of an offer or contract. Intending purchasers should not rely on them as statements of representation of fact, but must satisfy themselves by inspection or otherwise as to their accuracy. No person in this firms employment has the authority to make or give any representation or warranty in respect of the property.