



5a Wray Park Road

, Reigate, RH2 0DG

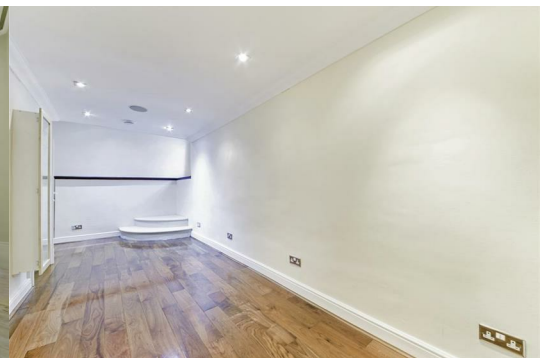
£2,999 Per Calendar Month



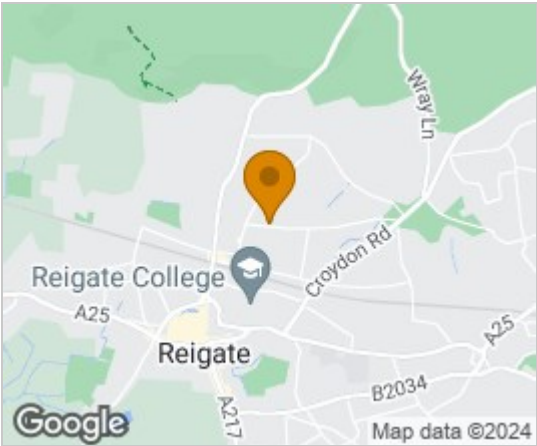
**** AVAILABLE NOW **** A Four Bedroom Wing Property with Patio Garden and set in Landscaped communal Gardens with Off Road Parking for Two cars, Garage and being located close to Reigate Town Centre & Railway station.

Accommodation Comprises an Impressive Drawing Room with many Original Features including Open fireplace, coved cornice ceiling & feature arch window.

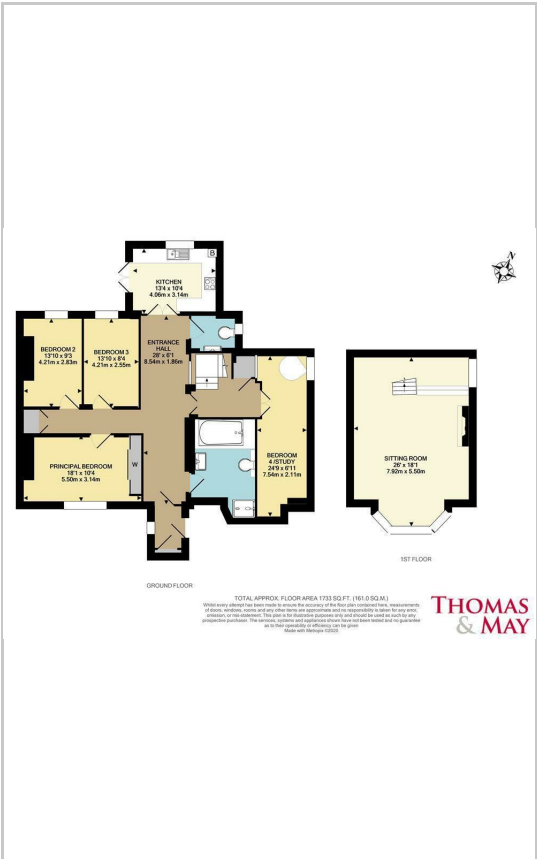
Property offers an Integrated Kitchen / Breakfast Room, Wet Room, Separate Cloakroom & Patio.



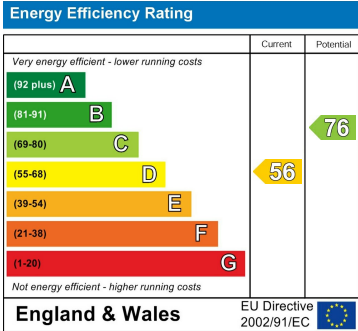
Area Map



Floor Plans



Energy Efficiency Graph



These particulars, whilst believed to be accurate are set out as a general outline only for guidance and do not constitute any part of an offer or contract. Intending purchasers should not rely on them as statements of representation of fact, but must satisfy themselves by inspection or otherwise as to their accuracy. No person in this firm's employment has the authority to make or give any representation or warranty in respect of the property.