



4 Littleworth Road

, Esher, KT10 9FP

£2,750



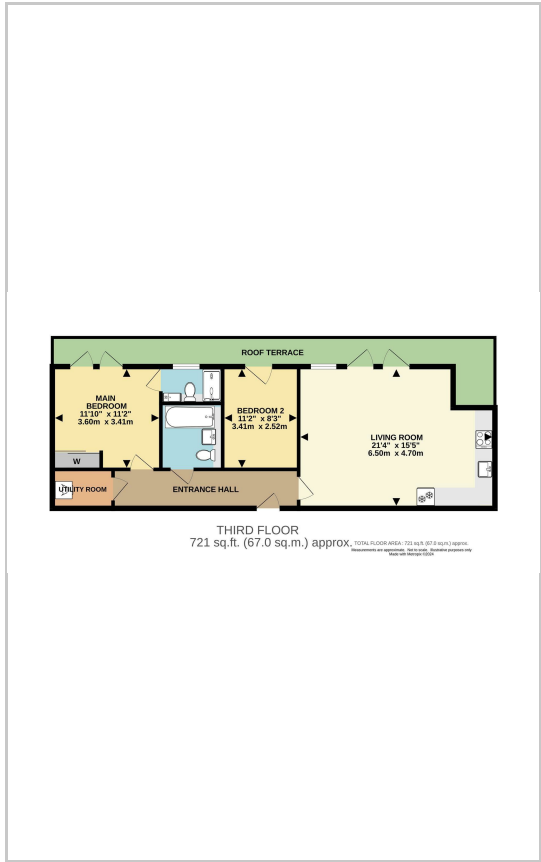
Nestled between Esher and leafy Claygate, this high-end, top floor, luxury two-bedroom apartment, with large open plan living and dining space, fully fitted with integrated, ultra-modern appliances and an L shaped balcony. The building has lifts at either end, a concierge, allocated parking space, with numerous visitor spaces. The apartment is a short walk to either Claygate or Esher train stations and amenities



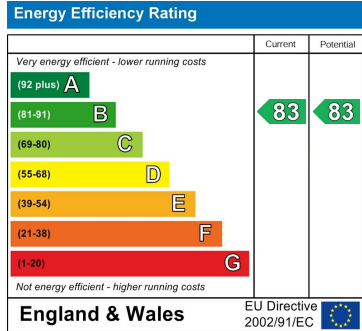
Area Map



Floor Plans



Energy Efficiency Graph



These particulars, whilst believed to be accurate are set out as a general outline only for guidance and do not constitute any part of an offer or contract. Intending purchasers should not rely on them as statements of representation of fact, but must satisfy themselves by inspection or otherwise as to their accuracy. No person in this firm's employment has the authority to make or give any representation or warranty in respect of the property.